

Roll & Hill
LIGHTING









Table of Contents

	P. 12	Lindsey Adelman
	P. 26	McKenzie & Keim
	P. 36	Jason Miller
Bell	P. 46	Post Company
	P. 56	Jonah Takagi
Boden	P. 66	David Weeks
	P. 74	Jason Miller
	P. 84	Karl Zahn
	P. 92	Fort Standard
Del Playa	P. 100	Jessica Helgerson
	P. 108	Philippe Malouin
	P. 114	Jason Miller
	P. 124	Joseph Guerra & Sina Sohrab
	P. 132	Rich Brilliant Willing
	P. 140	Jason Miller
	p. 150	Jason Miller
	P. 156	Philippe Malouin
	P. 164	Takagi & Homstvedt
	P. 172	Paul Loebach
	P. 184	Lindsey Adelman

2022 Collection

	P. 194	Bec Brittain
Mini Endless	P. 202	Jason Miller
	P. 210	Jason Miller
	P. 224	Lara Bohinc
	P. 232	McKenzie & Keim
	P. 240	Jason Miller
	P. 248	Philippe Malouin
Rue Sala	P. 258	Jessica Helgerson
	P. 266	Lukas Peet
	P. 274	Ladies & Gentlemen Studio
	P. 286	Rosie Li
	P. 292	Jason Miller
The Laddi	P. 300	Jenna Lyons
	P. 306	
	P. 308	
	P. 310	

Agnes – Astral Agnes

by Lindsey Adelman

Originally conceived as a candelabra, Agnes takes its inspiration from the fictional heroine of the same name, a worker in the world's oldest profession during the 1849 California Gold Rush. The modular system would allow Agnes easy setup in her makeshift "workspace." In this version, glowing glass tubes replace the candles. Articulated joints allow the glass to be arranged in a multitude of ways.



LIGHTING & MATERIALS

Chandelier — 20 Lights

Brushed Brass / Straight-Cut Glass

APPROX. MEASUREMENTS

L 59.5 in x W 50 in x H 33.5 in

L 151 cm x W 127 cm x H 85 cm

Finishes

- Black
- Brushed Brass
- Bronze
- Polished Nickel

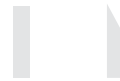
Canopy



A

A. 5-inch / 12.7-cm round
in matching metal finish

Glass Style



A

A. Straight-cut
B. Angle-cut

Lamping



A. 120V

B. 240V

A. 3-Watt LED, Frosted, G9 Base
B. 3-Watt LED, Frosted, G9 Base

Details

Materials

Machined Aluminum,
Glass

Suspension

1/2-inch / 1.3-cm aluminum stem in matching metal finish.
35-inch / 89-cm length included with lamp.
72-inch / 183-cm length available for additional cost.
Stem length can be adjusted on site.

Dimmer Compatibility

Triac or Electronic Low Voltage (ELV)

Year

2010

Designer

Lindsey Adelman lives and works in her hometown of New York City. She has specialized in lighting design since 1996. Founded in 2006, her studio has grown into a group of 40 with a recent location opening in Los Angeles.

The lighting collections are driven by developing industrial modular systems to capture the ephemeral, fleeting beauty of nature. Adelman first discovered Industrial Design when meeting a woman carving foam French Fries for an exhibition at her editorial job at the Smithsonian and went straight to study ID at the Rhode Island School of Design. She continues to be challenged and seduced by the immaterial substance of light and is obsessed with creating forms that maximize light's sensual effect and highlight emptiness.

Adelman's work has been exhibited at the Cooper-Hewitt National Design Museum, Design Miami, Nilufar Gallery, and BDDW, among others. For many years, the studio has embraced a philanthropic mission supporting the Robin Hood Foundation to fight poverty in New York City. Adelman credits much of the studio's current success to this desire to make an impact.

Adelman lives with her designer husband Ian and their son Finn in Brooklyn.

Features

Agnes glass cups and tips rotate.
Astral glass is fixed.





LIGHTING & MATERIALS
Chandelier — 01 - 12 Lights
Brushed Brass/Straight-Cut Glass

APPROX. MEASUREMENTS
L 26 in × W 26 in × H 12 in
L 65 cm × W 65 cm × H 30 cm



LIGHTING & MATERIALS
Chandelier — 14 Lights
Polished Nickel/Angle-Cut Glass

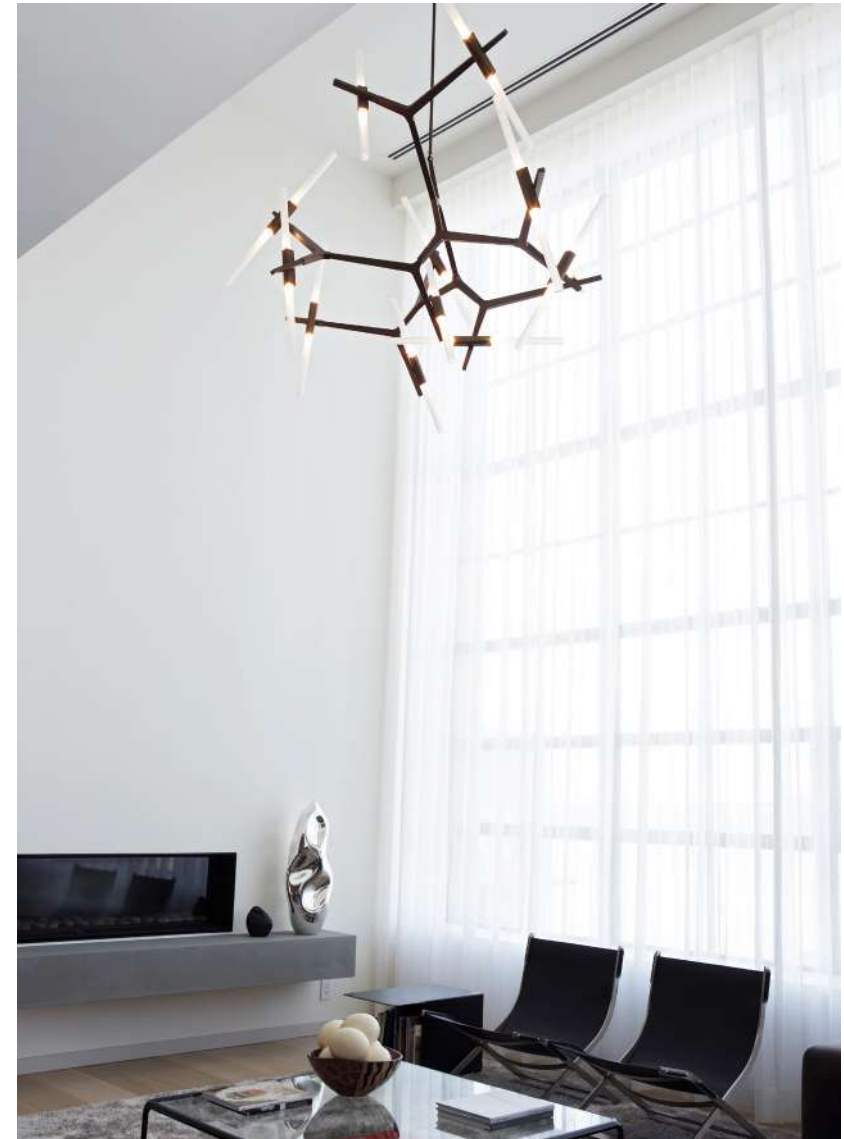
APPROX. MEASUREMENTS
L 72.5 in × W 34 in × H 21 in
L 184 cm × W 86 cm × H 53 cm



Private Residence — New York

LIGHTING & MATERIALS
 Chandelier — 10 Lights
 Polished Nickel/Straight-Cut Glass

APPROX. MEASUREMENTS
 L 38 in × W 32 in × H 25 in
 L 96 cm × W 82 cm × H 64 cm



Private Residence — New York

LIGHTING & MATERIALS
 Chandelier — 22 Lights
 Bronze/Straight-Cut Glass

APPROX. MEASUREMENTS
 Custom Configuration



LIGHTING & MATERIALS
 Cascade — 20 Lights
 Polished Nickel/Straight-Cut Glass

APPROX. MEASUREMENTS
 Detail



Private Residence — Seattle

LIGHTING & MATERIALS
 Cascade — 20 Lights
 Bronze/Straight-Cut Glass

APPROX. MEASUREMENTS
 L 29 in x W 26 in x H 102 in
 L 74 cm x W 65 cm x H 259 cm



LIGHTING & MATERIALS
Chandelier — 03 - 24 Lights
Polished Nickel / Straight-Cut Glass

APPROX. MEASUREMENTS
L 59 in x W 59 in x H 17 in
L 149 cm x W 149 cm x H 43 cm



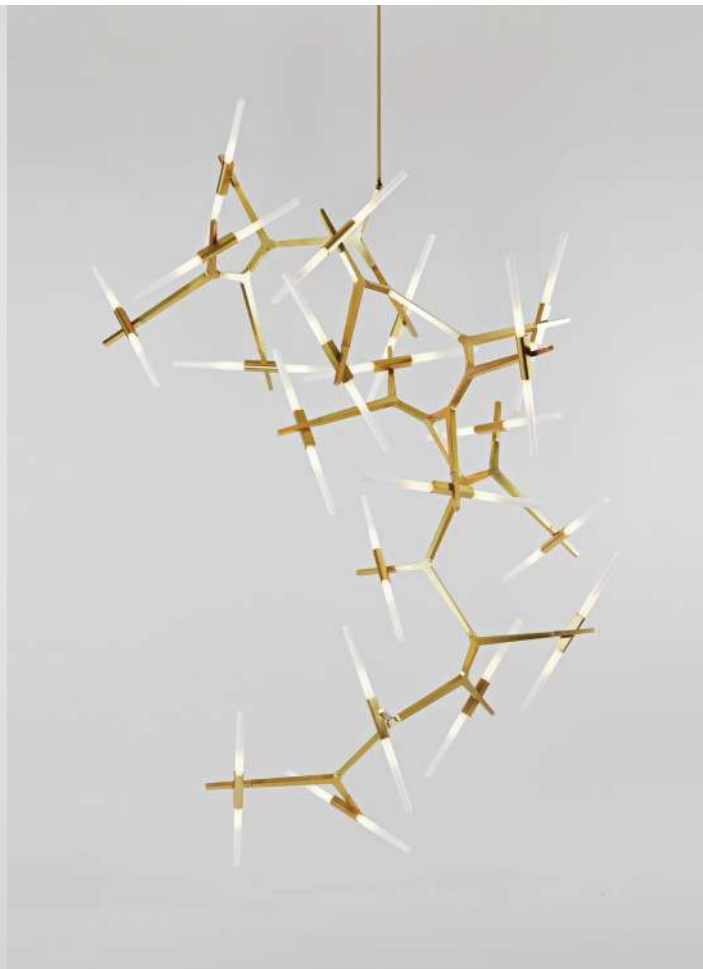
LIGHTING & MATERIALS
Chandelier — 14 Lights
Black / Straight-Cut Glass

APPROX. MEASUREMENTS
Detail



LIGHTING & MATERIALS
Sconce — 2 Lights
Bronze / Angle-Cut Glass

APPROX. MEASUREMENTS
H 26.5 in x W 10 in x D 3.5 in
H 67 cm x W 26 cm x D 9 cm



LIGHTING & MATERIALS
Swarm — 40 Lights
Brushed Brass / Straight-Cut Glass

APPROX. MEASUREMENTS
Custom Configuration



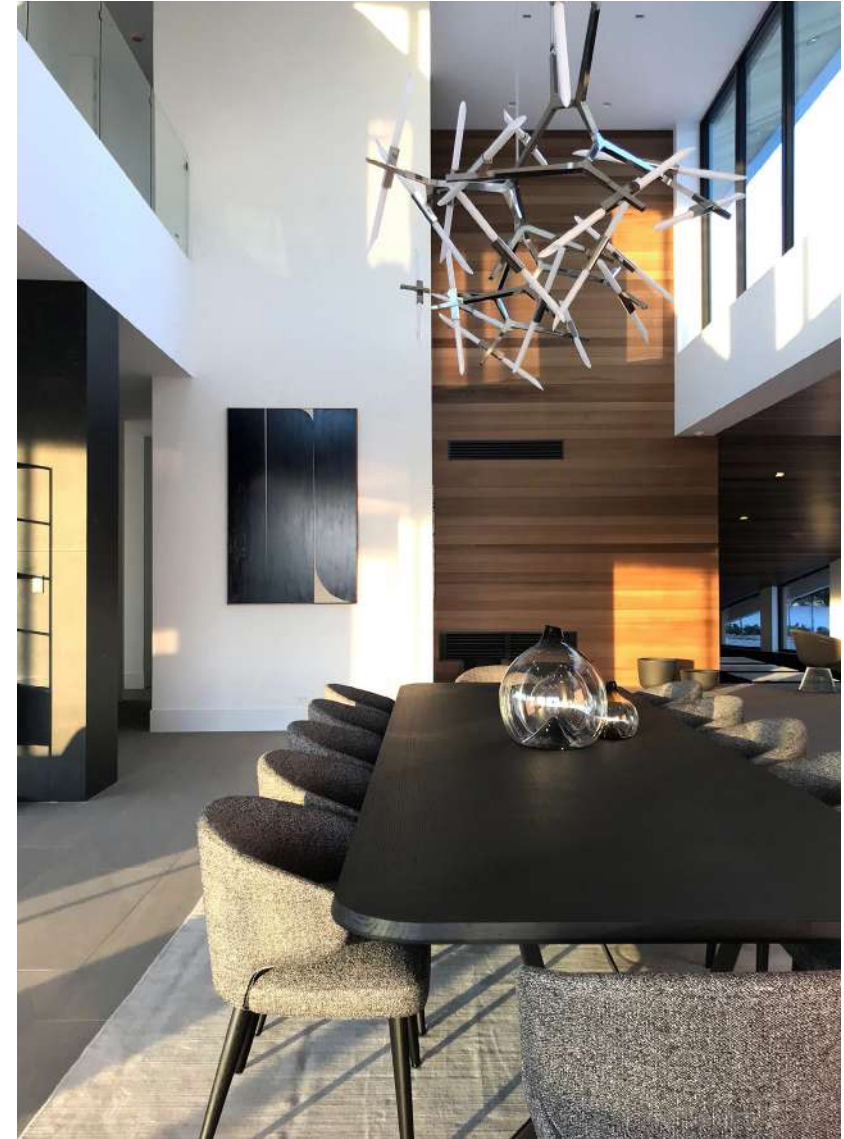
Private Residence — Mill Valley

LIGHTING & MATERIALS

Pendant — 2 Lights
Black/Straight-Cut Glass

APPROX. MEASUREMENTS

L 24.5 in x W 3.5 in x H 15 in
L 63 cm x W 8 cm x H 37 cm



Private Residence — Boca Raton

LIGHTING & MATERIALS

Chandelier — 40 Lights
Polished Nickel / Angle-Cut Glass

APPROX. MEASUREMENTS

Custom Configuration

Apollo

by McKenzie & Keim

This award-winning design is all about the details. Brass and hand-blown glass seamlessly blend into the matte-finish armature. The Apollo collection features a balanced, double-stemmed luminary, housing LEDs in opal glass shades to cast a brilliant yet soft light.



LIGHTING & MATERIALS

Chandelier — 6 Lights

Matte Black / Brushed Brass

APPROX. MEASUREMENTS

L 53 in x W 6 in x H 6 in

L 135 cm x W 15 cm x H 15 cm

Finishes – Armature

- Matte Black
- Matte Ivory

Finishes – Fittings

- Brushed Brass

Canopy



A B

- A. 14-inch x 5-inch / 35.5-cm x 12.7-cm pill-shaped canopy in Oxidized Oak.
- B. 14-inch x 5-inch / 35.5-cm x 12.7-cm pill-shaped canopy in Whitewashed Oak.

Lamping 120V & 240V

Integrated LED

Details

Materials

Brass, Aluminum, Glass, White Oak

Suspension

1/2-inch brass stems (2) in matching metal finish.
35-inch / 88-cm length included with lamp.
72-inch / 183-cm length available for additional cost.
Length can be adjusted on site.

Dimmer Compatibility

120V: Triac, Electronic Low Voltage (ELV)
or 0-10V
240V: Electronic Low Voltage (ELV)
or 0-10V

Year

2019

Designer

Taylor McKenzie-Veal and Brendan Keim started their eponymous studio to bring their designs to life and into people's homes. After years of pursuing their own careers, they joined forces, fusing their knowledge of materials, production, technology and design into one studio. McKenzie & Keim was born in 2016, and operates today from their location in the Logan Square neighborhood of Chicago, Illinois.





LIGHTING & MATERIALS

Pendant — Stem
Brushed Brass

APPROX. MEASUREMENTS

Ø8 in x H 6 in
Ø20 cm x H 16 cm



LIGHTING & MATERIALS

Chandelier — 12 Lights
Matte Black / Brushed Brass

APPROX. MEASUREMENTS

L 57 in x W 57 in x H 19 in
145 cm x 145 cm x 47 cm



LIGHTING & MATERIALS

Sconce
Oxidized Oak / Brushed Brass

APPROX. MEASUREMENTS

Ø2.8in x D 3.7 in
Ø7 cm x D 9.5 cm



LIGHTING & MATERIALS

Chandelier — 4 Lights
Matte Ivory / Brushed Brass

APPROX. MEASUREMENTS

L 53 in x W 6 in x H 3 in
L 135 cm x W 15 cm x H 8 cm



Roll & Hill — New York

LIGHTING & MATERIALS

Custom Configuration
Matte Black / Brushed Brass

APPROX. MEASUREMENTS

Custom Configuration



LIGHTING & MATERIALS

Chandelier — 6 Lights
Matte Black / Brushed Brass

APPROX. MEASUREMENTS

Detail



Roll & Hill — New York

LIGHTING & MATERIALS
 Chandelier — 12 Lights
 Matte Black / Brushed Brass

APPROX. MEASUREMENTS
 L 57 in x W 57 in x H 19 in
 L 145 cm x W 145 cm x H 47 cm



LIGHTING & MATERIALS
 Chandelier — 5 Lights
 Matte Black / Brushed Brass

APPROX. MEASUREMENTS
 L 53 in x W 6 in x H 4.5 in
 L 135 cm x W 15 cm x H 11 cm

Bauer

by Jason Miller

Jason Miller's Bauer is a pendant fixture made of stacked, concentric clusters of handblown tubular glass. The glass fades from dark to light, recalling the tonalities of earth-to-sky views, producing an ethereal, atmospheric effect.



LIGHTING & MATERIALS

Chandelier 01

Bronze

APPROX. MEASUREMENTS

Dia. 15 in × H 28.5 in

Dia. 39 cm × H 72 cm

Finishes

- Black
- Brushed Brass

- Bronze

Glass Color

- White

Canopy



A

A, 5-inch / 12.7-cm round
in matching metal finish

Lamping 120V & 240V

Integrated LED

Details

Materials

Machined Aluminum,
Glass

Suspension

1/2-inch / 1.3-cm aluminum stem in matching metal finish.
35-inch / 89-cm length included with lamp.
72-inch / 183-cm length available for additional cost.
Stem length can be adjusted on site.

Dimmer Compatibility

Triac, Electronic Low Voltage (ELV) or 0-10V

Year

2016

Designer

Jason Miller is a Brooklyn-based designer and the founder of Roll & Hill. Born in New York and raised in Darien, Connecticut, Jason's suburban upbringing heavily influenced his early, more conceptual pieces — duct-taped chairs and cracked vases, among them — and continues to inform the elegant, historically rich work that has become his signature. Jason received an MFA in painting and spent time in both the art and advertising worlds, but soon realized he preferred making things to documenting them. His designs — like a mirror whose photographic surface recalls a painted landscape — still often reflect those early preoccupations, but each is a functional object, with a kind of beauty and wit. Today, Jason runs both Jason Miller Studio and Roll & Hill from his headquarters in Sunset Park, Brooklyn.





LIGHTING & MATERIALS

Chandelier 01
Brushed Brass

APPROX. MEASUREMENTS

Dia. 15 in × H 28.5 in
Dia. 39 cm × H 72 cm



LIGHTING & MATERIALS

Chandelier 02
Custom Finish

APPROX. MEASUREMENTS

Detail



LIGHTING & MATERIALS

Chandelier 02
Bronze

APPROX. MEASUREMENTS

Dia. 15 in × H 34 in
Dia. 39 cm × H 86 cm



LIGHTING & MATERIALS

Chandelier 01
Brushed Brass

APPROX. MEASUREMENTS

Detail



LIGHTING & MATERIALS

Chandelier 01
Bronze

APPROX. MEASUREMENTS

Dia. 15 in × H 28.5 in
Dia. 39 cm × H 72 cm



Casa Perfect — Los Angeles

LIGHTING & MATERIALS

Chandelier 01
Black

APPROX. MEASUREMENTS

Dia. 15 in × H 28.5 in
Dia. 39 cm × H 72 cm



goop LAB — New York

LIGHTING & MATERIALS

Chandelier 02
Bronze

APPROX. MEASUREMENTS

Dia. 15 in × H 34 in
Dia. 39 cm × H 86 cm



Roll & Hill — New York

LIGHTING & MATERIALS

Custom Chandelier
Custom Finish

APPROX. MEASUREMENTS

Custom Configuration

Bell

by Post Company

The Bell collection is part of a series of pieces designed by Post Company for Inness, a Hudson Valley country resort by tastemaker Taavo Somer that takes all of its cues from the surrounding landscape. This collection is an ode to the bell jar lantern, dating back to 18th century French and British candlelit fixtures. Bell adorns space with warmth and intimacy through a quiet presence and soft diminutive light sources reflected by streamlined geometries and raw materials.



LIGHTING & MATERIALS

Pendant 02

Blackened Brass

APPROX. MEASUREMENTS

L 16.5 in x W 16.5 in x H 13.71 in

L 41.9 cm x W 41.9 cm x H 34.8 cm

Finishes

- Unlacquered Brass
- Blackened Brass

Canopy



A

A, 5-inch / 12.7-cm round
in matching metal finish

Details

Materials
Brass, Glass

Features

The unlacquered brass finish will darken and patina over time. Polishing will restore the sheen if desired.

Lamping 120V & 240V

Integrated LED

Suspension

1/2-inch / 1.3-cm aluminum stem in matching metal finish.
35-inch / 89-cm length included with lamp.
72-inch / 183-cm length available for additional cost.
Stem length can be adjusted on site

Dimmer Compatibility

Triac, Electronic Low Voltage (ELV) or 0-10V

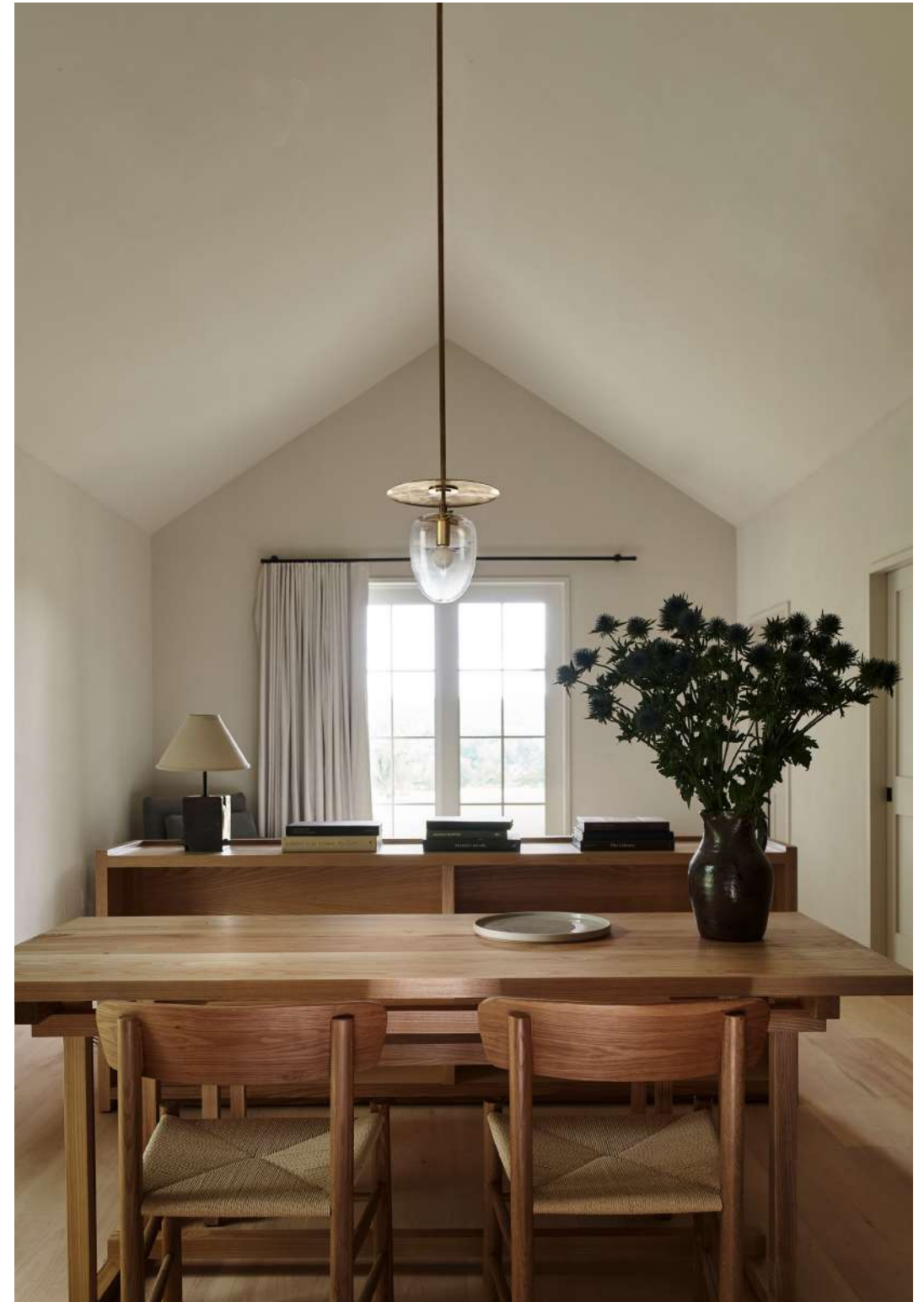
Year

2022

Designer

Post Company is a design studio operating across hospitality, retail and residential programs. The company creates environments that are grounded in rich narration and guided by collaborative research, contextual appreciation, and informed perspective. They believe that considered design creates space for discourse, human connection, and cultural growth.

Founded by Ruben Caldwell, Jou-Yie Chou, and Leigh Salem, the team is a collection of architects, interior designers, carpenters, art directors, and creatives working across disciplines. Their work is a composite of many voices both within and outside of the studio – Post Company believes that this collective expression is greater than that of the individual and that great design should be universally applicable and broadly accessible. As such, Post Company is always pushing to expand the reach of design beyond concepts of luxury and exclusivity.





LIGHTING & MATERIALS

Pendant 01

Blackened Brass

APPROX. MEASUREMENTS

L 10 in x W 10 in x H 9.6 in

L 25.4 cm x W 25.4 cm x H 24.4 cm



LIGHTING & MATERIALS

Flush Mount

Unlacquered Brass

APPROX. MEASUREMENTS

Detail



LIGHTING & MATERIALS
Flush Mount
Unlacquered Brass

APPROX. MEASUREMENTS
L 10 in x W 10 in x H 10.1 in
L 25.4 cm x W 25.4 cm x H 25.6 cm



LIGHTING & MATERIALS
Sconce 02
Unlacquered Brass

APPROX. MEASUREMENTS
L 10 in x W 10 in x D 4 in
L 25.4 cm x W 25.4 cm x D 10.16 cm



LIGHTING & MATERIALS
Pendant 02
Blackened Brass

APPROX. MEASUREMENTS
Detail



LIGHTING & MATERIALS
Sconce 01
Blackened Brass

APPROX. MEASUREMENTS
L 10 in x W 10 in x D 3.9 in
L 25.4 cm x W 25.4 cm x D 9.9 cm



Inness — Accord

LIGHTING & MATERIALS

Sconce 02
Unlacquered Brass

APPROX. MEASUREMENTS

L 10 in x W 10 in x D 4 in
L 25.4 cm x W 25.4 cm x D 10.16 cm



LIGHTING & MATERIALS

Pendant 02
Unlacquered Brass

APPROX. MEASUREMENTS

L 16.5 in x W 16.5 in x H 13.71 in
L 41.9 cm x W 41.9 cm x H 34.8 cm

Bluff City

by Jonah Takagi

Bluff City integrates a traditional pendant shade and a wire cage into an industrially-inflected, elegant fixture. Inspired in the town of Memphis, Tennessee, Bluff City's different materials and finish combinations give the lamp a vaguely postmodern feel that also echoes the Memphis design movement of the 1980s.



LIGHTING & MATERIALS

14-inch

White / Brass

APPROX. MEASUREMENTS

Dia. 14 in × H 13 in

Dia. 36 cm × H 32 cm

Finishes

-  Mint / Red
-  White / Black

-  White / Brass
-  Blue / Nickel

Canopy



A

A. 5-inch / 12.7-cm round
in white

Lamping



A. 120V

B. 240V

8-inch

A. 6-Watt LED, Frosted, G40 Globe,
E26 Base

B. 6-Watt LED, Frosted, G40 Globe,
E27 Base



C. 120V

D. 240V

14-inch

C. 6-Watt LED, Frosted, A19 Shape,
E26 Base

D. 6-Watt LED, Frosted, A19 Shape,
E27 Base

Details

Materials

Powder-coated
and Plated Steel

Suspension

144-inch / 366-cm cord.
Length can be adjusted on site.

Dimmer Compatibility

Triac or Electronic Low Voltage (ELV)

Year

2010

Designer

Born in Tokyo and raised in New England, Jonah received a Bachelor of Fine Arts from the Rhode Island School of Design in 2002. For several years, Jonah designed furniture and lighting that he built in a friend's studio while he played bass guitar, touring and recording with several indie rock bands. Needing to develop and showcase a growing body of work that was filling his house but few had seen, Jonah founded his own design studio in 2010.





Private Residence — New York

LIGHTING & MATERIALS

14-inch
White / Brass

APPROX. MEASUREMENTS

Dia. 14 in × H 13 in
Dia. 36 cm × H 32 cm



Orion Jet Center — Miami

LIGHTING & MATERIALS

8-inch
White / Black

APPROX. MEASUREMENTS

Dia. 8 in × H 10 in
Dia. 20 cm × H 25 cm



LIGHTING & MATERIALS

14-inch
White / Black

APPROX. MEASUREMENTS

Dia. 14 in × H 13 in
Dia. 36 cm × H 32 cm



LIGHTING & MATERIALS

14-inch
Mint / Red

APPROX. MEASUREMENTS

Dia. 14 in × H 13 in
Dia. 36 cm × H 32 cm



LIGHTING & MATERIALS

8-inch
White / Brass

APPROX. MEASUREMENTS

Dia. 8 in × H 10 in
Dia. 20 cm × H 25 cm



LIGHTING & MATERIALS

8-inch
Blue / Nickel

APPROX. MEASUREMENTS

Dia. 8 in × H 10 in
Dia. 20 cm × H 25 cm



Private Residence — New York

LIGHTING & MATERIALS

8-inch
White / Black

APPROX. MEASUREMENTS

Dia. 8in x H 10in
Dia. 20 cm x H 25cm



New Belgium Ranger Station — Snowmass Village

LIGHTING & MATERIALS

14-inch
Custom Finish

APPROX. MEASUREMENTS

Dia. 14 in x H 13 in
Dia. 36 cm x H 32 cm

Boden

by David Weeks

Boden is a sculptural fixture emanating from irregular balance points. Designed to be versatile in application, the components feel equally refined as a single piece, or installed as repeating architectural elements, or groups. The Boden shades contain a dimmable LED source and rotate to cast light directionally. The design is intricate, refined, and elegantly efficient.

LIGHTING & MATERIALS

Chandelier 06 — Vertical
Gloss Black / Brushed Brass

APPROX. MEASUREMENTS

L 53.2 in x W 53.2 in x H 68.5 in
L 135.1 cm x W 135.1 cm x H 173.8 cm



Finishes - Shades

● Gloss Black

Finishes - Armature

● Brushed Brass

Features

Boden shades rotate.
Shade interiors are a satin white finish.

Canopy



A. Chandelier 02, 04

B. Chandelier 06

A. 5-inch / 12.7-cm round in matching metal finish

B. 10-inch / 25.4-cm round in matching metal finish

Lamping 120V & 240V

Integrated LED

Details

Materials

Brass, Aluminum

Suspension

1/2-inch / 1.3-cm aluminum stem in matching metal finish.

35-inch / 89-cm length included with lamp.

72-inch / 183-cm length available for additional cost.

Stem length can be adjusted on site.

Dimmer Compatibility

120V: Triac, Electronic Low Voltage (ELV)

or 0-10V

240V: 0-10V or DALI

Table Lamp: Integrated dimmer on cord

Year

2022

Designer

David Weeks Studio is a Brooklyn-based design studio, founded in 1996. A multi-disciplinary designer renowned for his iconic sculptural lighting, founder David Weeks' minimalist visual language articulates an ongoing, and open-ended, dialogue between material and form. His genre-defining work is the result of a distinctly hands-on, sculptural process of formal reduction which marries an artist's sensibility with technical precision.

David Weeks lives in Brooklyn with his wife, Georgianna Stout, and their two children. He also makes toys.



Chandelier 04 — Horizontal, Gloss Black / Brushed Brass



LIGHTING & MATERIALS

Table Lamp

Gloss Black / Brushed Brass

APPROX. MEASUREMENTS

L 28.5 in x W 4.75 in x H 11.95 in

L 72.18 cm x W 12 cm x H 30.3 cm



LIGHTING & MATERIALS

Chandelier 06 — Vertical

Gloss Black / Brushed Brass

APPROX. MEASUREMENTS

Detail



LIGHTING & MATERIALS

Sconce 02

Gloss Black / Brushed Brass

APPROX. MEASUREMENTS

L 36 in x W 3 in x H 20 in

L 91.4 cm x W 7.6 cm x H 51 cm

LIGHTING & MATERIALS

Chandelier 02 — Horizontal

Gloss Black / Brushed Brass

APPROX. MEASUREMENTS

Detail



LIGHTING & MATERIALS
Chandelier 04 — Horizontal
Gloss Black / Brushed Brass

APPROX. MEASUREMENTS
Detail



LIGHTING & MATERIALS
Chandelier 02 — Horizontal
Gloss Black / Brushed Brass

APPROX. MEASUREMENTS
L 69.4 in x W 1.5 in x H 3 in
L 176.14 cm x W 3.8 cm x H 7.8 cm

Castle

by Jason Miller

While the shape of these pieces occasionally resemble the turrets of a castle, the name actually comes from the game of chess. The rook can jump any distance, yet it is restricted to moving orthogonally. Likewise, the glass in Castle extends to different lengths, but is always horizontal or vertical.

LIGHTING & MATERIALS

12 — 03

Black / Cream

APPROX. MEASUREMENTS

L 20 in × W 20 in × H 37.5 in

L 51 cm × W 51 cm × H 95 cm



Finishes

- Black
- Bronze
- Brushed Brass

Glass Colors

- Smoke
- Clear
- Cream

Canopy



A

A, 5-inch / 12.7-cm round in matching metal finish

Lamping 120V & 240V

Integrated LED

Details

Materials

Machined Aluminum,
Glass

Suspension

1/2-inch / 1.3-cm aluminum stem in matching metal finish.
35-inch / 89-cm length included with lamp.
72-inch / 183-cm length available for additional cost.
Stem length can be adjusted on site.

Dimmer Compatibility

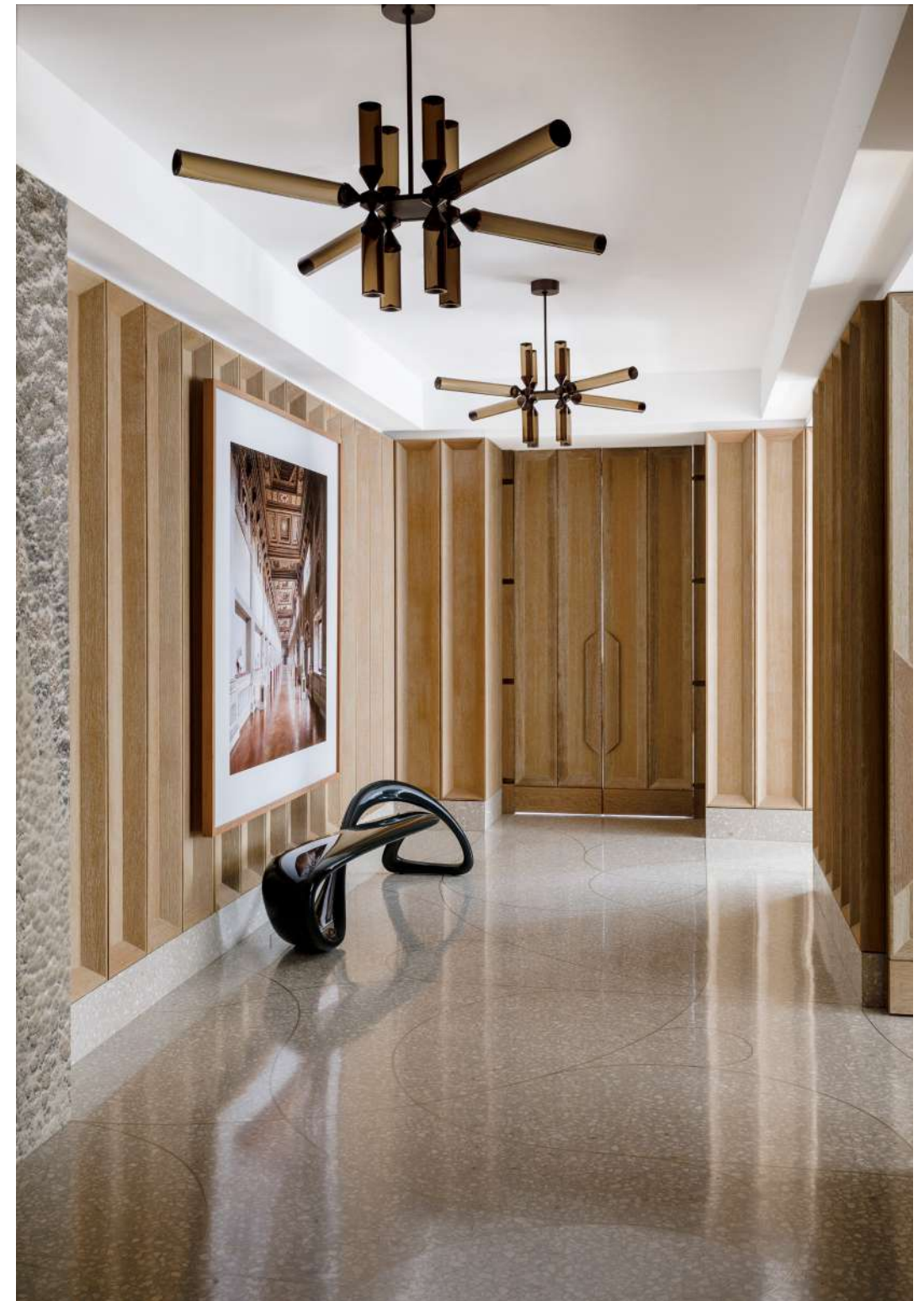
Triac, Electronic Low Voltage (ELV) or 0-10V

Year

2015

Designer

Jason Miller is a Brooklyn-based designer and the founder of Roll & Hill. Born in New York and raised in Darien, Connecticut, Jason's suburban upbringing heavily influenced his early, more conceptual pieces — duct-taped chairs and cracked vases, among them — and continues to inform the elegant, historically rich work that has become his signature. Jason received an MFA in painting and spent time in both the art and advertising worlds, but soon realized he preferred making things to documenting them. His designs — like a mirror whose photographic surface recalls a painted landscape — still often reflect those early preoccupations, but each is a functional object, with a kind of beauty and wit. Today, Jason runs both Jason Miller Studio and Roll & Hill from his headquarters in Sunset Park, Brooklyn.





LIGHTING & MATERIALS

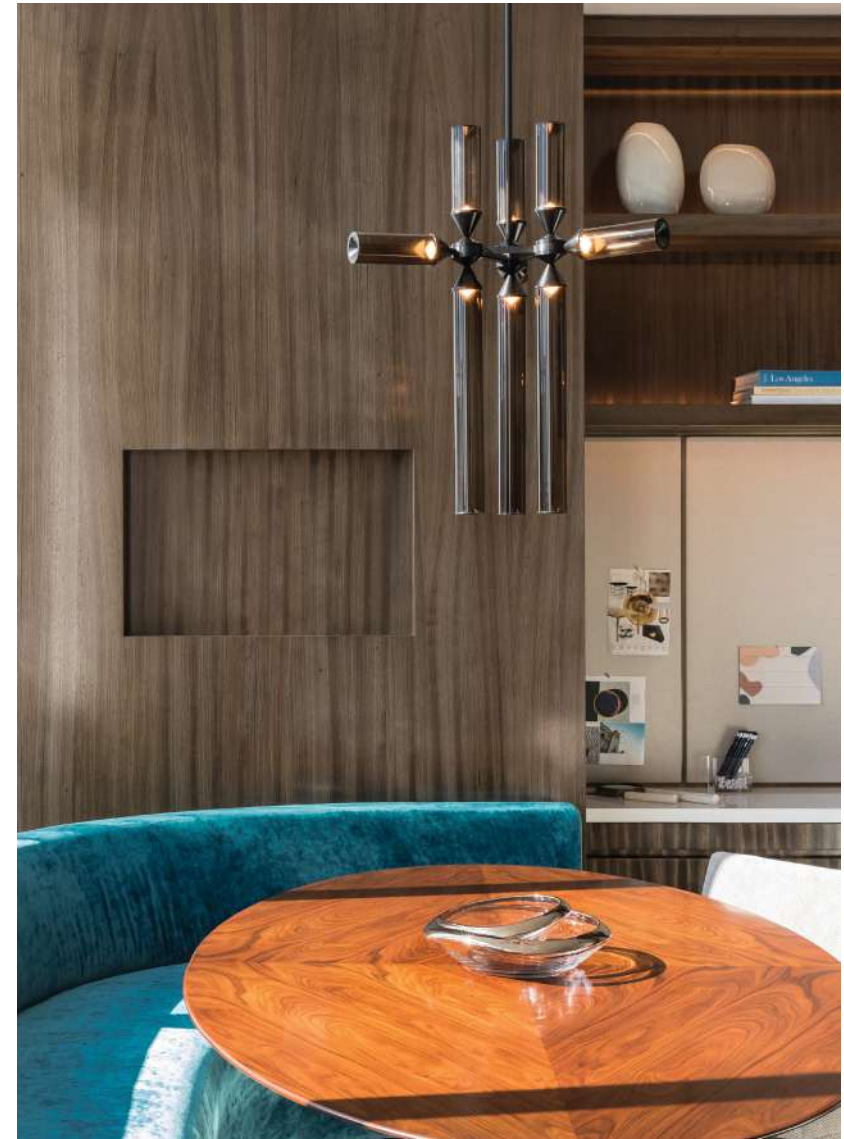
12—04

Black / Cream

APPROX. MEASUREMENTS

L 20 in x W 20 in x H 37.5 in

L 51 cm x W 51 cm x H 95 cm



Private Residence — New York

LIGHTING & MATERIALS

9—02

Black / Smoke

APPROX. MEASUREMENTS

L 22.5 in x W 19.5 in x H 27.5 in

L 57 cm x W 50 cm x H 70 cm



LIGHTING & MATERIALS

12—04

Custom Finish

APPROX. MEASUREMENTS

Detail



LIGHTING & MATERIALS

18—01

Black / Smoke

APPROX. MEASUREMENTS

L 44 in x W 50 in x H 17.5 in

L 112 cm x W 126 cm x H 44 cm



LIGHTING & MATERIALS

18—03

Brushed Brass / Clear

APPROX. MEASUREMENTS

L 30 in x W 27 in x H 37.5 in

L 76 cm x W 68 cm x H 95 cm



Private Residence — Dublin

LIGHTING & MATERIALS

12—04

Black / Cream

APPROX. MEASUREMENTS

L 20 in x W 20 in x H 37.5 in

L 51 cm x W 51 cm x H 95 cm

Cora

by Karl Zahn

Cora is another name for the goddess Persephone, kidnapped by Hades and taken to the underworld. Before releasing her, Hades tricked her into eating a pomegranate seed, the food of the dead, which forced her to return every year. The lustrous finish and warm illumination in Karl Zahn's series evoke Cora's annual return, which brought earthly light and warmth to the underworld.



LIGHTING & MATERIALS

Pendant — 8 Lights

Polished Nickel

APPROX. MEASUREMENTS

L 16 in × W 8 in × H 25 in

L 41 cm × W 20 cm × H 64 cm

Finishes

- Black
- Polished Brass
- Bronze
- Polished Nickel

Canopy



A. 4 Units B. 8 Units

- A. 10 × 5-inch / 25.4-cm × 12.7-cm rectangle in matching metal finish
- B. 18 × 5-inch / 45.7-cm × 12.7-cm rectangle in matching metal finish

Lamping 120V & 240V

Integrated LED

Details

Materials

Aluminum, Acrylic

Suspension

96-inch / 244-cm cord.
Length can be adjusted on site.

Dimmer Compatibility

120V: Triac, Electronic Low Voltage (ELV)
or 0-10V
240V: Electronic Low Voltage (ELV) or 0-10V

Year

2015

Designer

Born and raised in rural Vermont, Karl Zahn's work with wood and natural materials developed out of his time spent playing in forests and wood shops. His designs express a pared down simplicity and stark aesthetic that blends modernist hard lines with traditional furniture craft. After earning a degree in product design from the Rhode Island School of Design in 2003, Karl traveled to San Francisco, where he immersed himself in the creative and complicated metalworking culture that thrives there. In 2007, he moved to New York to begin working on his own. He lives in Greenpoint, Brooklyn.

Features

Sconce shade rotates to create directional light.





LIGHTING & MATERIALS

Pendant — 8 Lights
Bronze

APPROX. MEASUREMENTS

L 16 in × W 8 in × H 25 in
L 41 cm × W 20 cm × H 64 cm



LIGHTING & MATERIALS

Pendant — 4 Lights
Polished Brass

APPROX. MEASUREMENTS

L 8 in × W 8 in × H 25 in
L 20 cm × W 20 cm × H 64 cm



LIGHTING & MATERIALS

Pendant — 4 Lights
Polished Nickel

APPROX. MEASUREMENTS

L 8 in x W 8 in x H 25 in
L 20 cm x W 20 cm x H 64 cm



LIGHTING & MATERIALS

Sconce
Bronze

APPROX. MEASUREMENTS

H 9.5 in x W 5 in x D 5 in
H 24 cm x W 13 cm x D 13 cm

Counterweight

by Fort Standard

Counterweight is a series of LED fixtures made of gently arching, steam-bent wood that uses marble and brass as ballasts. Whether acting to counterbalance the lamp of the pendant light, or fixed as the base of the sconce, the mass of the stone and metal acts as a foil to the otherwise lightweight frames.



LIGHTING & MATERIALS

Pendant

Ash

APPROX. MEASUREMENTS

Dia. 64 in x W 2.5 in x H 12 in

Dia. 163 cm x W 6 cm x H 30 cm

Finishes

- Ash (Wood)
- Walnut (Wood)
- Carrara Marble (Stone)
- Brass (Metal)

Canopy



A. 10 × 4-inch / 25.4-cm × 10.2-cm
rectangle in matching metal finish

Details

Materials
Brass, Glass,
Marble, Wood

Suspension
Fixed Pendant cord and aircraft cable.
Length can be adjusted on site.

Dimmer Compatibility
120V: Triac, Electronic Low Voltage (ELV)
or 0-10V
240V: Electronic Low Voltage (ELV) or 0-10V

Year

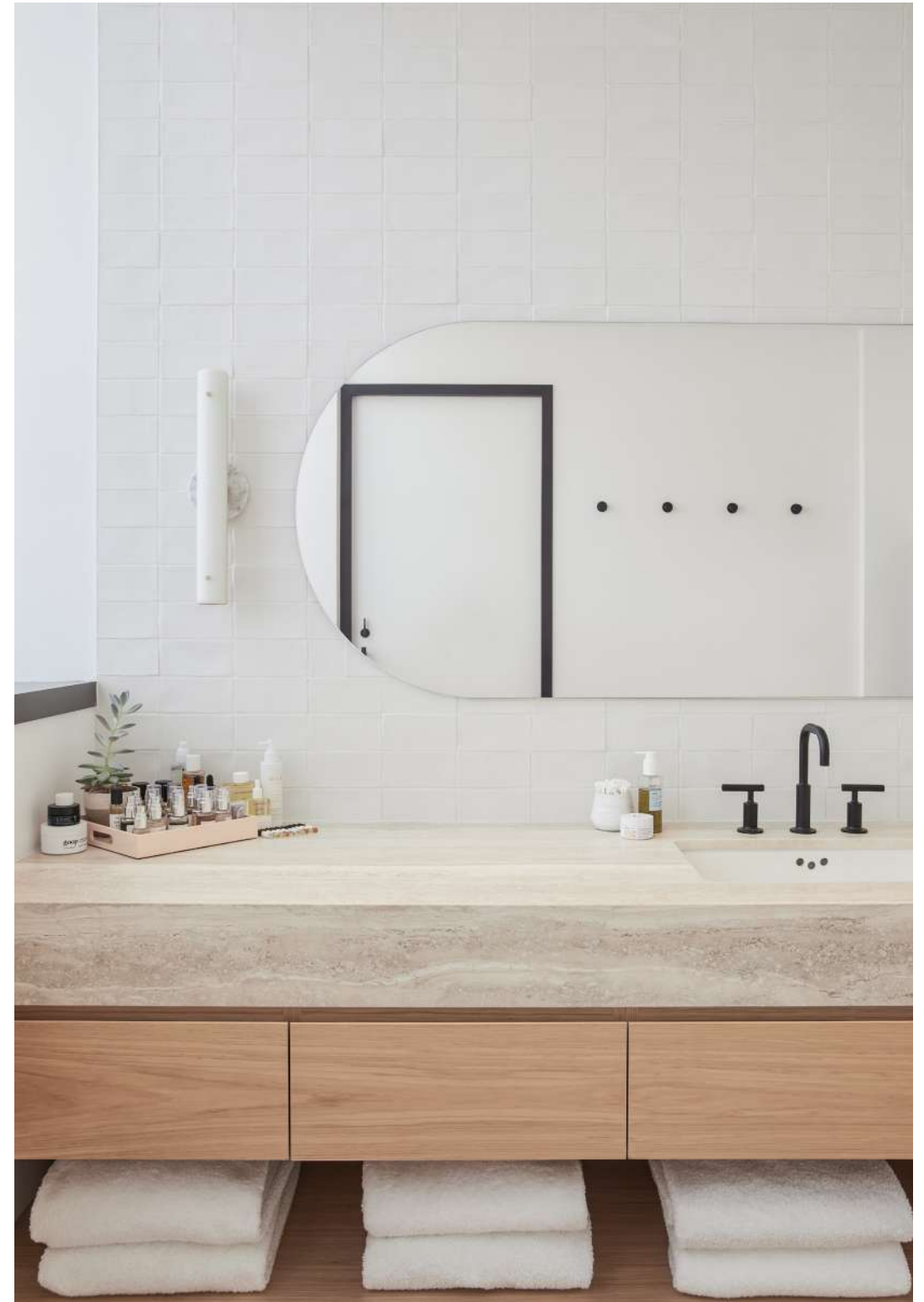
2011

Designer

Fort Standard is a contemporary design studio and manufacturer based in Greenpoint, Brooklyn. Founder and Designer Gregory Buntain explores the interplay of natural materials and modern production processes to create distinctive designs rooted in simplicity and functionality. Merging progressive design thinking with an obsessive approach to craft, Fort Standard's lighting, furniture and home goods help transform everyday spaces into ideal living environments.

Features

Pendant drop length and height are adjustable.





LIGHTING & MATERIALS

Pendant
Walnut

APPROX. MEASUREMENTS

L 64 in x W 2.5 in x H 12 in
L 163 cm x W 6 cm x H 30 cm



LIGHTING & MATERIALS

Rectangle Sconce
Ash

APPROX. MEASUREMENTS

H 18 in x W 5 in x D 4 in
H 46cm x W 13cm x D 10cm



Natura Artis Magistra — Amsterdam

LIGHTING & MATERIALS

Circle Sconce (8)
Ash

APPROX. MEASUREMENTS

H 18 in x W 5 in x D 4 in
H 46 cm x W 13 cm x D 10 cm



LIGHTING & MATERIALS

Pendant
Ash

APPROX. MEASUREMENTS

Detail

Del Playa

by Jessica Helgerson

Helgerson's Del Playa is composed of turned wood stems and ceramic shades that recall her childhood on the beaches of Santa Barbara. The materials in this line feel very much of that time and place – the handcrafted aesthetic of California in the 70s.



LIGHTING & MATERIALS

Four Arm Pendant

White Oak, Bone China

APPROX. MEASUREMENTS

L 42in x W 33in x H 40in

L 106.7cm x W 83.8cm x H 102cm

Finishes

● White Oak / Bone China

Canopy



A. 12in / 30.5cm x 2in / 5cm
round in matching white oak

Details

Materials

White Oak, Bone China,
Brass, Opal Glass

Suspension

1-1/2-inch wood stem in matching wood
finish. 35-inch length included with lamp.
72-inch length available for additional cost.
Stem length can be adjusted on site.

Dimmer Compatibility

120V: Triac or Electronic Low Voltage (ELV)
240V: Electronic Low Voltage (ELV) or 0-10V

Year

2022

Designer

Jessica Helgerson grew up with one foot in Southern California and the other in France. With a French mother and an American father; summers in France, school years in Santa Barbara, she developed a love for both countries, both cultures, and both have had a profound impact on her design work. She briefly worked in an architecture firm after school, but very early in her career felt that there wasn't an office doing quite the kind of work she wanted to do, and so in 2000 she opened her eponymous design studio.

Now, twenty years later, the firm has grown into something that is much more than Jessica, though she remains at the heart of its design direction. Jessica is also a restless dreamer and schemer, and loves imagining new creative avenues for her studio to explore. Some of those have included Front of House - an installation gallery in the front of the JHID office, XUXO - a collaborative importing crafts from indigenous communities in Mexico, The 1% Project - an effort aimed at supporting non-profits working to end homelessness, and most recently the opening of a Paris branch of JHID which is finally allowing her to bring those two halves of herself together in her design work.

Jessica LOVES to design things, and her favorite project is always the one she's working on at the moment.

Lamping 120V & 240V

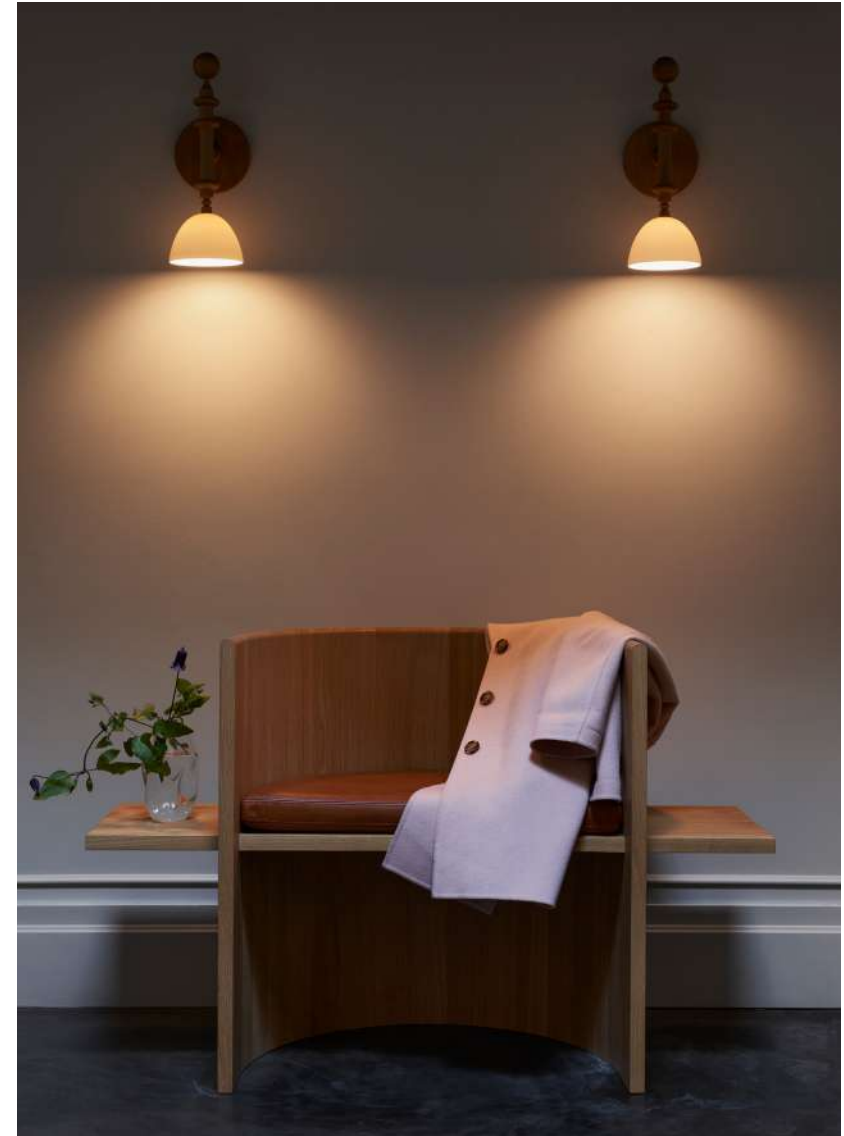
Integrated LED





LIGHTING & MATERIALS
Four Arm Pendant
White Oak / White Bone China

APPROX. MEASUREMENTS
L 42in x W 33in x H 40in
L 106.7cm x W 83.8cm x H 102cm



Roll & Hill — New York

LIGHTING & MATERIALS
Single Arm Sconce
White Oak / White Bone China

APPROX. MEASUREMENTS
H 15.5in x W 5.5in x D 7.5in
H 39.5cm x W 14cm x D 19cm



LIGHTING & MATERIALS
Two Arm Pendant
White Oak / White Bone China

APPROX. MEASUREMENTS
Detail



LIGHTING & MATERIALS
Double Arm Sconce
White Oak / White Bone China

APPROX. MEASUREMENTS
Detail



LIGHTING & MATERIALS
Four Arm Pendant
White Oak / White Bone China

APPROX. MEASUREMENTS
Detail



LIGHTING & MATERIALS
Single Arm Sconce
White Oak / White Bone China

APPROX. MEASUREMENTS
H 15.4in x W 5.5in x D 7.5in
H 39.4cm x 14cm x D 19cm

Eclipse

by Philippe Malouin

Named for its resemblance to the celestial phenomenon, this semi-spherical sconce by Philippe Malouin creates a corona of light that becomes larger and brighter as it extends from the wall.



LIGHTING & MATERIALS

Sconce

Black

APPROX. MEASUREMENTS

H 7 in × W 6 in × D 5 in

H 18 cm × W 16 cm × D 12 cm

Finishes

- Black
- Polished Brass

- Chrome

Details

Materials
Brass, Steel, Glass

Lamping 120V & 240V

Integrated LED

Year

2015

Designer

British-Canadian Philippe Malouin holds a bachelor's degree in Design from the Design Academy Eindhoven. He has also studied at the École Nationale Supérieure de Création Industrielle in Paris and University of Montreal. He set up his studio in 2008 after working for English designer Tom Dixon. Philippe also taught at the Royal College of Art in London between 2012–2015. He is the director of architectural and interiors design practice POST-OFFICE.

His diverse portfolio includes tables, rugs, chairs, lights, art objects and installations. Recently, Philippe won the Wallpaper* Magazine 'Designer of the Year' award. Philippe lives and works in London.

Features

- Lamp dims manually by adjusting distance to wall.
- Integrated switch turns fixture off when completely retracted.
- Fixed lamp maintains constant distance from the wall.





Roll & Hill — New York

LIGHTING & MATERIALS

Sconce
Black

APPROX. MEASUREMENTS

H 7 in × W 6 in × D 5 in
H 18 cm × W 16 cm × D 12 cm



LIGHTING & MATERIALS

Sconce
Chrome

APPROX. MEASUREMENTS

H 7 in × W 6 in × D 5 in
H 18 cm × W 16 cm × D 12 cm

LIGHTING & MATERIALS

Sconce
Polished Brass

APPROX. MEASUREMENTS

H 7 in × W 6 in × D 5 in
H 18 cm × W 16 cm × D 12 cm

Endless – Woody Endless

by Jason Miller

Jason Miller's Endless collection takes its inspiration from 1970s Super-graphics. After the reductionist intentions of modernism faded, some architects began to use large-scale graphic elements to define space. Graphic design became architecture; Endless was designed in the same spirit. Cylindrical sections and corner units allow Endless to be custom-configured as an architectural element.



LIGHTING & MATERIALS

5 Units

Black

APPROX. MEASUREMENTS

L 94 in x W 6 in x H 7.5 in

L 239 cm x W 15 cm x H 19 cm

Finishes

- Black
- Bronze
- Stained Oak (Woody Endless)
- Brushed Brass

Canopy



A

A, 5-inch / 12.7-cm round
in matching metal finish

Lamping 120V & 240V

Integrated LED

Details

Materials

Aluminum,
Acrylic, Wood

Suspension

1/2-inch / 1.3-cm aluminum stem in matching metal finish.
35-inch / 89-cm length included with lamp.
72-inch / 183-cm length available for additional cost.
Stem length can be adjusted on site.

Dimmer Compatibility

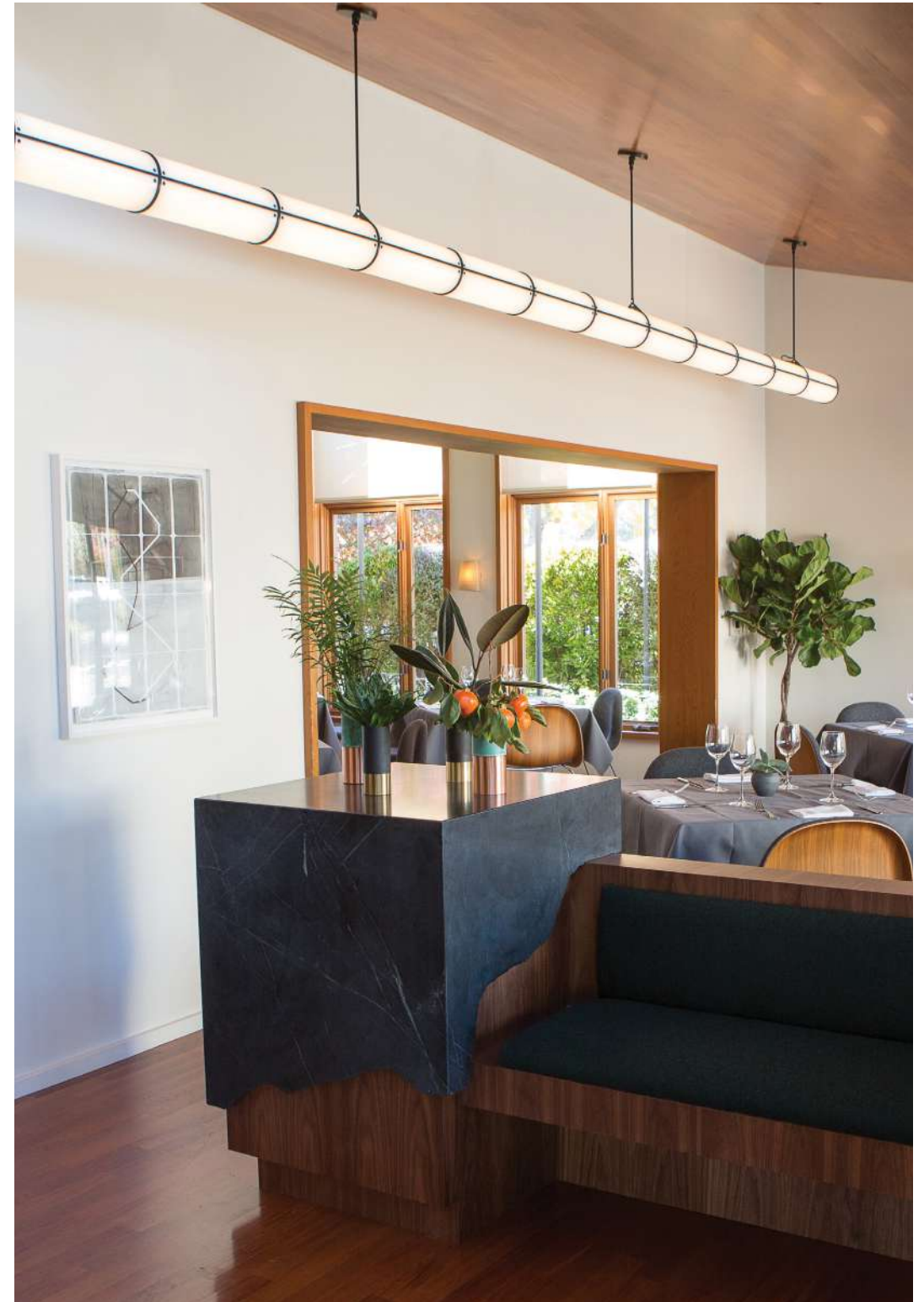
120V: Triac, Electronic Low Voltage (ELV)
or 0-10V
240V: Electronic Low Voltage (ELV) or 0-10V

Year

2012

Designer

Jason Miller is a Brooklyn-based designer and the founder of Roll & Hill. Born in New York and raised in Darien, Connecticut, Jason's suburban upbringing heavily influenced his early, more conceptual pieces — duct-taped chairs and cracked vases, among them — and continues to inform the elegant, historically rich work that has become his signature. Jason received an MFA in painting and spent time in both the art and advertising worlds, but soon realized he preferred making things to documenting them. His designs — like a mirror whose photographic surface recalls a painted landscape — still often reflect those early preoccupations, but each is a functional object, with a kind of beauty and wit. Today, Jason runs both Jason Miller Studio and Roll & Hill from his headquarters in Sunset Park, Brooklyn.





Private Residence — Paris

LIGHTING & MATERIALS

3 Units

Black / Stained Oak

APPROX. MEASUREMENTS

L 55 in x W 6 in x H 7.5 in

L 140 cm x W 16 cm H 19 cm



LIGHTING & MATERIALS

5 Units

Black / Stained Oak

APPROX. MEASUREMENTS

L 91 in x W 6 in x H 7.5 in

L 231 cm x W 16 cm x H 19 cm



Private Residence — Washington, DC

LIGHTING & MATERIALS

3 Units
Brushed Brass

APPROX. MEASUREMENTS

L 58 in x W 6 in x H 7.5 in
L 148 cm x W 16 cm x H 19 cm



Hostaria del Piccolo — Los Angeles

LIGHTING & MATERIALS

Custom Configuration
Black

APPROX. MEASUREMENTS

Custom Configuration

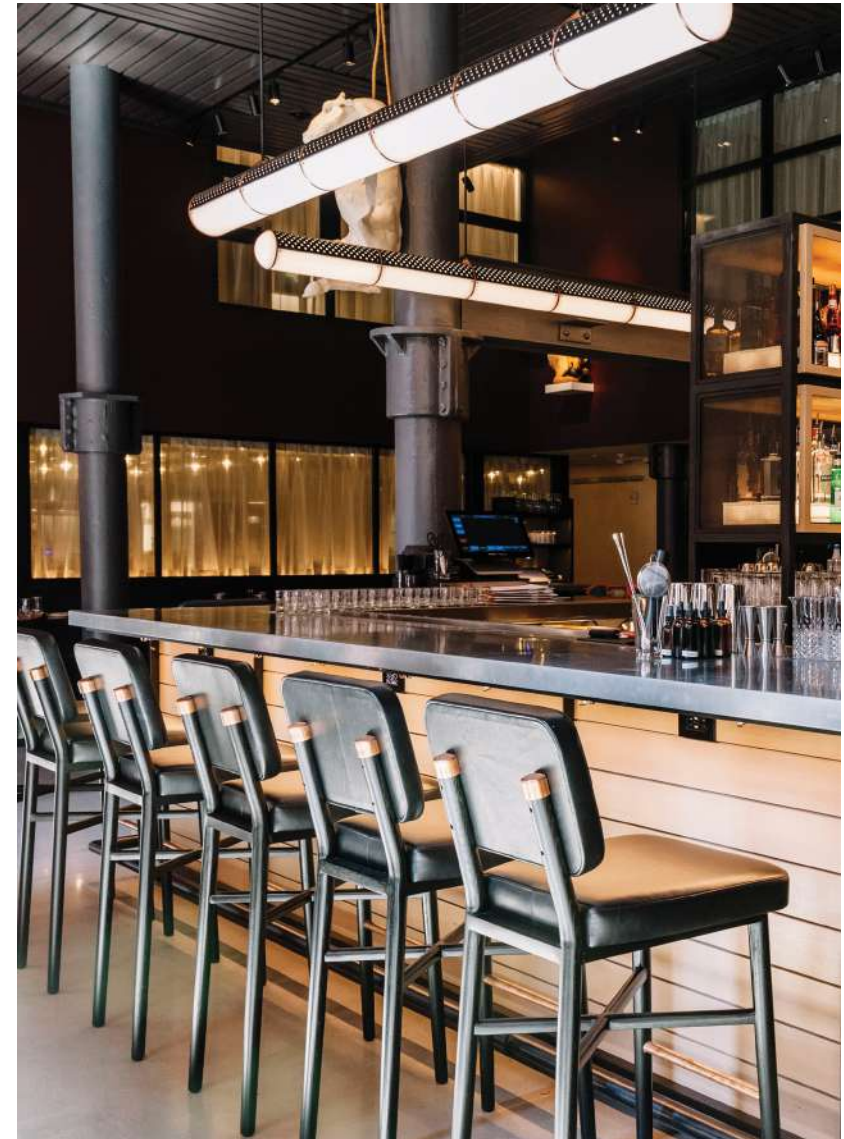


LIGHTING & MATERIALS

3 Units / Brushed Brass
5 Units / Black

APPROX. MEASUREMENTS

L 58 in x W 6 in x H 7.5 in (3 Units)
L 94 in x W 6 in x H x 7.5 in (5 Units)



Grey & Dudley — Nashville

LIGHTING & MATERIALS

Custom Configuration
Custom Finish

APPROX. MEASUREMENTS

Custom Configuration

Esper

by Joseph Guerra and Sina Sohrab

The Esper Lanterns take inspiration from chochins, the archetypal lanterns typically found outside sushi restaurants and late night hang-outs in Japan. The three different forms are distortions of the iconic lanterns, with smooth and spartan shapes that look to the future while retaining the humility of centuries past.



LIGHTING & MATERIALS

Pendant 03

Blackened Steel / White

APPROX. MEASUREMENTS

Dia. 13 in × H 24.5 in

Dia. 32 cm × H 62 cm

Finishes

● Blackened Steel

Glass Color

○ White

Canopy



A

A. 5-inch round / 12.7-cm
round in matching metal finish

Lamping 120V & 240V

Integrated LED

Details

Materials

Glass, Steel,
Aluminum

Suspension

96-inch / 244-cm cord.
Length can be adjusted on site.

Dimmer Compatibility

Triac or Electronic Low Voltage (ELV)

Year

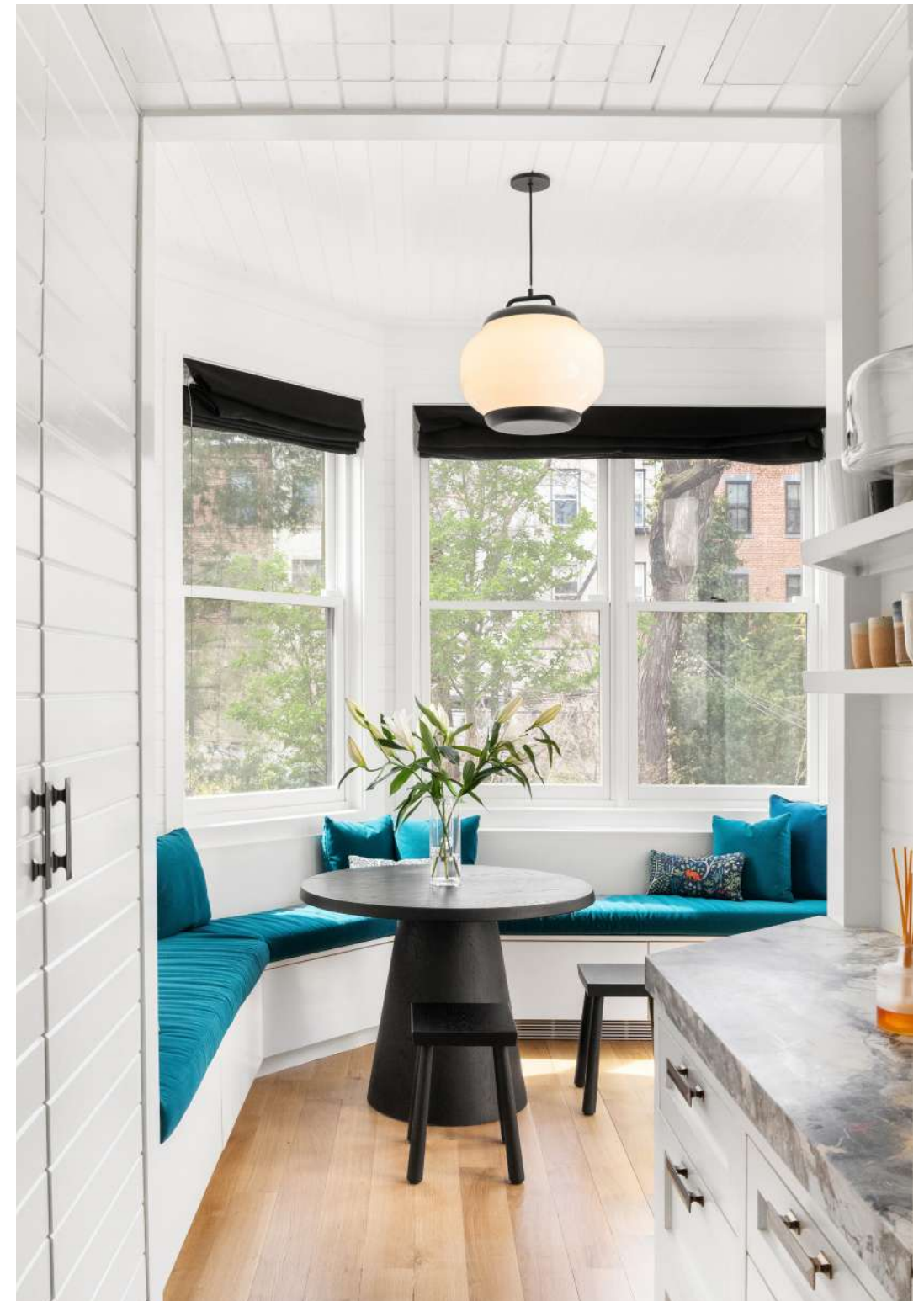
2016

Designer

Joseph Guerra and his team focus on creating salient ideas, finding their materials and ultimately defining the forms they can be realized in. The office draws on everyday observations, deep research and an anthropological approach as a means of product development. The ambition is to build objects that live in the future, with a careful eye on the past. The office distills ideas down to what they should be, while keeping what appeals to our human sensibilities.

Sina Sohrab is an industrial designer based in Madrid. His work explores domesticity, how it is manifested in various cultures, and the behavioral fingerprints that are left through time and adaptation. This inquiry is reflected in his furniture and product designs, as well as essays, exhibitions, and research projects.

Guerra and Sohrab's works have been internationally recognized and exhibited, most recently at the Noguchi Museum in New York City, and they have been the recipient of several design awards, including a Red Dot 'Best of the Best' and a Wallpaper* Design Award.





Roll & Hill — New York

LIGHTING & MATERIALS

Table Lamp
Blackened Steel / White

APPROX. MEASUREMENTS

Dia. 11 in x H 14 in
Dia. 27 cm x H 36 cm



LIGHTING & MATERIALS

Table Lamp
Blackened Steel / White

APPROX. MEASUREMENTS

Detail



LIGHTING & MATERIALS
Pendant 02
Blackened Steel / White

APPROX. MEASUREMENTS
Dia. 18 in x H 17.5 in
Dia. 45 cm x H 44 cm



LIGHTING & MATERIALS
Pendant 01
Blackened Steel / White

APPROX. MEASUREMENTS
Dia. 11 in x H 14.5 in
Dia. 27 cm x H 37 cm

Excel

by Rich Brilliant Willing

Spare and playful, Excel is a family of fixtures made from elegant wood and metal poles and an illuminated, bold shade. Inspired by the lines and geometric charts of the Microsoft spreadsheet program, the full Excel family includes the desk lamp, wall sconce, floor lamp, and chandelier.



LIGHTING & MATERIALS

Chandelier

Black

APPROX. MEASUREMENTS

L 58 in × W 61 in × H 7 in

L 148 cm × W 154 cm × H 18 cm

Finishes – Desk Lamp

- Black/Oak
- White/Oak

Finishes – Sconce

- Black/Walnut
- White/Walnut
- Red/Walnut

Finishes – Floor Lamp

- Black/Oak
- White/Oak

Finishes – Chandelier

- Black
- White

Canopy



A. 5-inch / 12.7-cm
round in white

Lamping



A. 120V A. 240V

Sconce, Floor Lamp, Chandelier

A. 6-Watt LED, Frosted, A19 Shape, E26 Base
B. 6-Watt LED, Frosted, A19 Shape, E27 Base

Table Lamp

Integrated LED

Details

Materials

Aluminum, Fabric,
Steel, Wood

Suspension

Chandelier: 96-inch / 244-cm cord.
Length can be adjusted on site.

Dimmer Compatibility

Triac or Electronic Low Voltage (ELV)
Table Lamp: Non-dimmable

Year

2008

Designer

Rich Brilliant Willing is a Brooklyn-based studio that designs and manufactures LED fixtures for hospitality, workplace, and residential projects. Incorporated in 2009 by Theo Richardson, Charles Brill and Alexander Williams, the studio has been a pioneering force in the use of LEDs in contemporary design, recognizing its potential to bring both warmth and energy efficiency to everyday life. Today, through an experimental approach guided by technology, creativity, and simplicity, the studio continues to break new ground in lighting design. Products range from subtle to statement pieces, continually providing new solutions to architects' and designers' needs.





LIGHTING & MATERIALS

Chandelier
Black

APPROX. MEASUREMENTS

Detail



Private Residence — Sagaponack

LIGHTING & MATERIALS

Table Lamp
Black / Oak

APPROX. MEASUREMENTS

H 20 in x W 10 in x D 19 in
H 50 cm x W 25 cm x D 48 cm



Private Residence — New York

LIGHTING & MATERIALS

Floor Lamp
Black / Oak

APPROX. MEASUREMENTS

H 86 in x W 51 in x D 33 in
H 218 cm x W 129 cm x D 83 cm



LIGHTING & MATERIALS

Chandelier / White
Sconce / Black / Walnut

APPROX. MEASUREMENTS

L 58 in x W 61 in x H 7 in (Chandelier)
H 12.5 in x W 24 in x D 11 in (Sconce)

Fiddlehead

by Jason Miller

Jason Miller's Fiddlehead is a series of lamps which derives its name from sprouting ferns. One end of Fiddlehead's long, furling arm gently balances a hand-blown glass globe; the other uses the ceiling as a counterbalance.



LIGHTING & MATERIALS

Pendant

Blackened Steel / Smoke

APPROX. MEASUREMENTS

L 10.5 in × W 10 in × H 30 in

L 27 cm × W 26 cm × H 76 cm

Finishes

- Blackened Steel
- Oil-Rubbed Bronze
- Brushed Brass

Glass Colors

- Smoke
- Clear
- Cream

Canopy



A. Cantilever B. Pendant

- A. 5-inch / 12.7-cm round in matching metal finish
- B. 5-inch / 12.7-cm round in matching metal finish

Lamping



A. 120V B. 240V

- Smoke / Clear
- A. 6-Watt LED, Clear, G25 Globe, E26 Base
- B. 6-Watt LED, Clear, G25 Globe, E27 Base



C. 120V D. 240V

- Cream
- C. 6-Watt LED, Frosted, A19 Shape, E26 Base
- D. 6-Watt LED, Frosted, A19 Shape, E27 Base

Details

Materials
Steel, Glass

Suspension
1/2-inch / 1.3-cm steel stem in matching metal finish.
35-inch / 88-cm length included with lamp.
72-inch / 183-cm length available for additional cost.
Stem length can be adjusted on site.

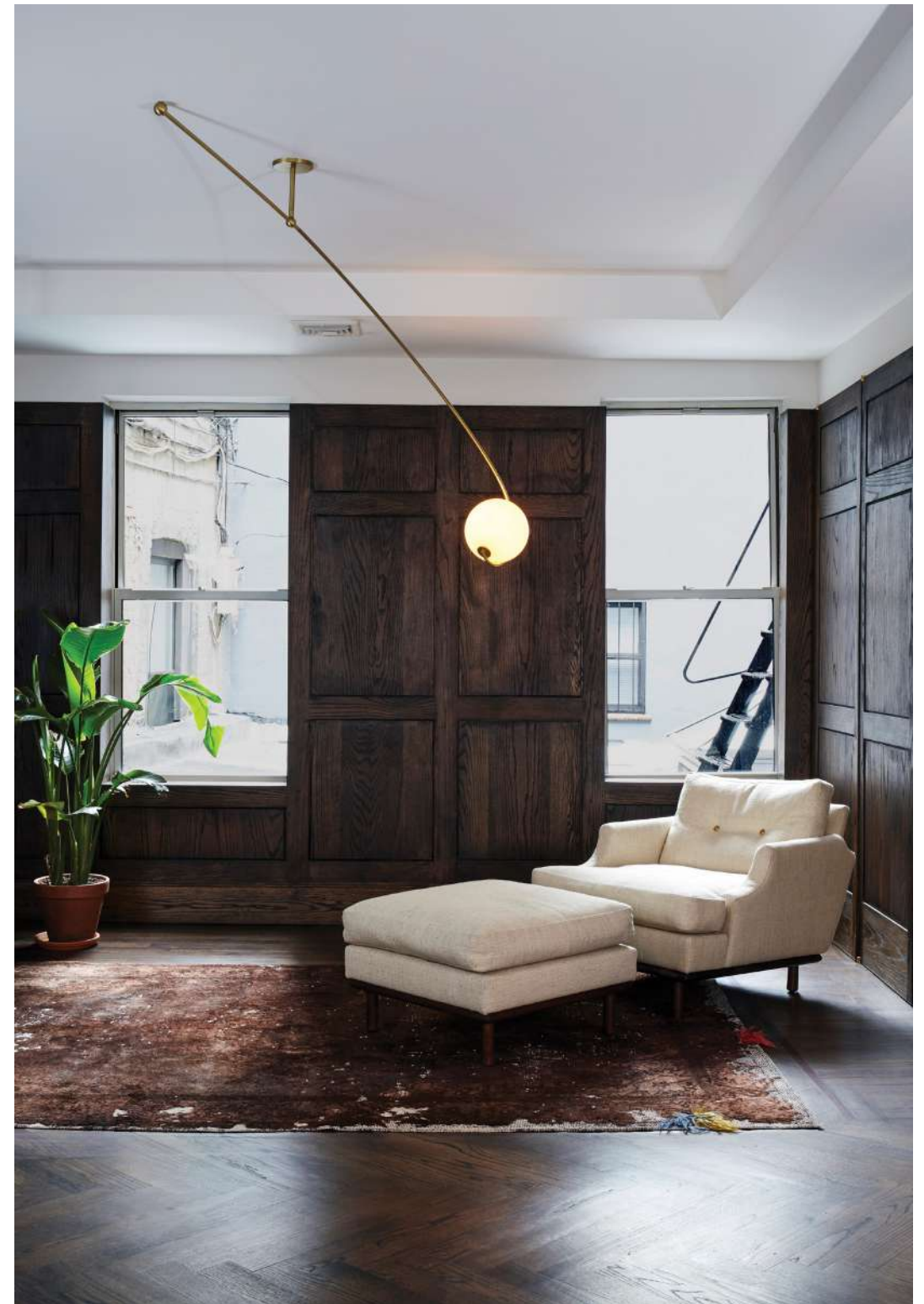
Dimmer Compatibility
Triac or Electronic Low Voltage (ELV)

Year

2014

Designer

Jason Miller is a Brooklyn-based designer and the founder of Roll & Hill. Born in New York and raised in Darien, Connecticut, Jason's suburban upbringing heavily influenced his early, more conceptual pieces — duct-taped chairs and cracked vases, among them — and continues to inform the elegant, historically rich work that has become his signature. Jason received an MFA in painting and spent time in both the art and advertising worlds, but soon realized he preferred making things to documenting them. His designs — like a mirror whose photographic surface recalls a painted landscape — still often reflect those early preoccupations, but each is a functional object, with a kind of beauty and wit. Today, Jason runs both Jason Miller Studio and Roll & Hill from his headquarters in Sunset Park, Brooklyn.





Wm. Mulherin's Sons — Philadelphia

LIGHTING & MATERIALS

Pendant
Oil-Rubbed Bronze / Cream

APPROX. MEASUREMENTS

L 10.5 in x W 10 in x H 30 in
L 27 cm x W 25 cm x H 76 cm



Roll & Hill — New York

LIGHTING & MATERIALS

Cantilever
Blackened Steel / Cream

APPROX. MEASUREMENTS

L 99 in x W 10 in x H 33 in
L 252 cm x W 25 cm x H 84 cm



LIGHTING & MATERIALS
Cantilever
Bronze / Cream

APPROX. MEASUREMENTS
L 99 in x W 10 in x H 33 in
L 252 cm x W 25 cm x H 84 cm



LIGHTING & MATERIALS
Pendant
Black / Clear

APPROX. MEASUREMENTS
L 10.5 in x W 10 in x H 30 in
L 27 cm x W 25 cm x H 76 cm



LIGHTING & MATERIALS
Cantilever
Brushed Brass / Cream

APPROX. MEASUREMENTS
Detail



LIGHTING & MATERIALS
Sconce
Brushed Brass / Smoke

APPROX. MEASUREMENTS
H 10.5 in x W 10 in x D 11 in
H 27 cm x W 25 cm x D 28 cm



LIGHTING & MATERIALS

Sconce
Brushed Brass / Clear

APPROX. MEASUREMENTS

H 10.5 in x W 10 in x D 11 in
H 27 cm x W 25 cm x D 28 cm



Private Residence — New York

LIGHTING & MATERIALS

Pendant (3)
Brushed Brass / Cream

APPROX. MEASUREMENTS

L 10.5 in x W 10 in x H 30 in
L 27 cm x W 25 cm x H 76 cm

Geode

by Jason Miller

Geode is made of three layers of solid, hand-blown glass, and carefully ground to a hemisphere. The process exposes a smooth, pale center, and a bold halo beneath the colored exterior.

LIGHTING & MATERIALS

Sconce

Pink / Polished Brass

APPROX. MEASUREMENTS

L 6.5 in x W 4 in x H 7.5 in

L 17 cm x W 10.6 cm x H 19 cm



Finishes

- Polished Brass
- Polished Nickel
- Blackened Steel

Glass Color

- Pink
- Cream
- Brown

Lamping 120V & 240V

Integrated LED

Details

Materials

Glass, Aluminum,
Stainless Steel

Backplate

5.5-inch / 14-cm round
in coordinating metal finish

Dimmer Compatibility

Triac, Electronic Low Voltage (ELV) or 0-10V

Year

2019

Designer

Jason Miller is a Brooklyn-based designer and the founder of Roll & Hill. Born in New York and raised in Darien, Connecticut, Jason's suburban upbringing heavily influenced his early, more conceptual pieces — duct-taped chairs and cracked vases, among them — and continues to inform the elegant, historically rich work that has become his signature. Jason received an MFA in painting and spent time in both the art and advertising worlds, but soon realized he preferred making things to documenting them. His designs — like a mirror whose photographic surface recalls a painted landscape — still often reflect those early preoccupations, but each is a functional object, with a kind of beauty and wit. Today, Jason runs both Jason Miller Studio and Roll & Hill from his headquarters in Sunset Park, Brooklyn.





LIGHTING & MATERIALS
Sconce
Cream / Polished Nickel

APPROX. MEASUREMENTS
L 6.5 in x W 4 in x H 7.5 in
L 17 cm x W 10.6 cm x H 19 cm



LIGHTING & MATERIALS
Sconce
Brown / Blackened Steel

APPROX. MEASUREMENTS
L 6.5 in x W 4 in x H 7.5 in
L 17 cm x W 10.6 cm x H 19 cm



LIGHTING & MATERIALS
Sconce
Pink / Polished Brass

APPROX. MEASUREMENTS
L 6.5 in x W 4 in x H 7.5 in
L 17 cm x W 10.6 cm x H 19 cm



LIGHTING & MATERIALS
Sconce
Brown / Blackened Steel

APPROX. MEASUREMENTS
L 6.5 in x W 4 in x H 7.5 in
L 17 cm x W 10.6 cm x H 19 cm

Gridlock

by Philippe Malouin

Raw and unpretentious, Gridlock is a series of lamps in the style of the Brutalist movement. Gridlock feels industrial in its straightforward, platonic forms and the repetitive efficiency of the grid; however, it is assembled entirely by hand from thousands of tiny brass parts. Philippe Malouin's tribute to the industry-inspired, labour-saving dreams of modernism is paid for in toil.



LIGHTING & MATERIALS

Pendant — 7440

Raw Brass

APPROX. MEASUREMENTS

L 38 in × W 38 in × H 20.5 in

L 96 cm × W 96 cm × H 52 cm

Finishes

● Raw Brass

Canopy



A

A. 5-inch / 12.7-cm square
in matching metal finish

Lamping 120V & 240V

Integrated LED

Details

Materials
Brass, Steel

Suspension

5/8-inch steel stem in matching metal finish.
35-inch / 89-cm length included with lamp.
72-inch / 183-cm length available for additional cost.
Stem length can be adjusted on site.

Dimmer Compatibility

Switch: Triac or Electronic Low Voltage (ELV)
Pendants, Ceiling Mount: Triac, Electronic Low
Voltage (ELV) or 0-10V

Year

2010

Designer

British-Canadian Philippe Malouin holds a bachelor's degree in Design from the Design Academy Eindhoven. He has also studied at the École Nationale Supérieure de Création Industrielle in Paris and University of Montreal. He set up his studio in 2008 after working for English designer Tom Dixon. Philippe also taught at the Royal College of Art in London between 2012–2015. He is the director of architectural and interiors design practice POST-OFFICE.

His diverse portfolio includes tables, rugs, chairs, lights, art objects and installations. Recently, Philippe won the Wallpaper* Magazine 'Designer of the Year' award. Philippe lives and works in London.





Holiday House London 2017 — London

LIGHTING & MATERIALS

Ceiling Mount — 5640

Raw Brass

APPROX. MEASUREMENTS

L 38 in x W 38 in x H 12 in

L 96 cm x W 96 cm x H 31 cm



Poliform — New York

LIGHTING & MATERIALS

Pendant — 1912

Raw Brass

APPROX. MEASUREMENTS

L 22 in x W 22 in x H 13 in

L 56 cm x W 56 cm x H 32 cm



LIGHTING & MATERIALS

Pendant — 1912
Custom Finish

APPROX. MEASUREMENTS

L 22 in x W 22 in x H 13 in
L 56 cm x W 56 cm x H 32 cm



LIGHTING & MATERIALS

Sconce — 193
Raw Brass

APPROX. MEASUREMENTS

H 14 in x W 6 in x D 5 in
H 36 cm x W 15 cm x D 13 cm

Half & Half

by Takagi & Homstvedt

A literal declaration of form, Jonah Takagi and Hallgeir Homstvedt have created a sense of completeness in their recent collaboration with Roll & Hill. The play between the geometric shapes was the starting point for this design. Half & Half is in many ways the archetype of a pendant lamp.



LIGHTING & MATERIALS

Pendant — Cone

Black / Clear Frosted

APPROX. MEASUREMENTS

Dia 13 in x H 14.5 in

Dia 33 cm x H 41 cm

Finishes

- Black
- Green
- White
- Blue
- Red

Glass Colors

- Clear Frosted

Canopy



A

A. 5-inch / 12.7-cm round canopy in white

Lamping



A. 120V

B. 240V

A. 6-Watt LED, Frosted, A19 Shape, E26 Base
B. 6-Watt LED, Frosted, A19 Shape, E27 Base

Details

Materials
Steel, Glass

Suspension
144-inch / 366-cm cord.
Length can be adjusted on site.

Dimmer Compatibility
Triac or Electronic Low Voltage (ELV)

Year

2018

Designer

While Hallgeir Homstvedt and Jonah Takagi have been friends for years, their first collaboration as designers came only recently as part of an exhibition curated by the influential design blog Sight Unseen and sponsored by the Embassy of Norway. Half & Half for Roll & Hill is the first co-designed product that they have licensed.

Hallgeir Homstvedt holds a BA of Industrial Design from Newcastle University in Australia. After completing his degree in 2006, Hallgeir went on to work for the much celebrated design studio Norway Says before opening his own design studio in 2009. Hallgeir has exhibited his work in London, Tokyo, Oslo, New York & Milan. Among his clients are renowned Norwegian and international furniture manufacturers like Lexon, Muuto, L.K.Hjelle and Established & Sons.

Jonah Takagi received a BFA in Furniture Design from the Rhode Island School of Design in 2002. After several years of life on the road as a touring musician, Jonah launched his studio in 2010. He has exhibited work throughout Europe and America and counts among his clients such esteemed brands as Roll and Hill, Matter Made, La Chance and Hem.





LIGHTING & MATERIALS
Pendant — Hemisphere
Green / Clear Frosted

APPROX. MEASUREMENTS
Dia 13 in x H 13 in
Dia 33 cm x H 33 cm



LIGHTING & MATERIALS
Pendant — Hemisphere
White / Clear Frosted

APPROX. MEASUREMENTS
Dia 13 in x H 13 in
Dia 33 cm x H 33 cm



LIGHTING & MATERIALS
Pendant — Cone
Blue / Clear Frosted

APPROX. MEASUREMENTS
Dia 13 in x H 14.5 in
Dia 33 cm x H 41 cm



LIGHTING & MATERIALS
Pendant — Cone
Red / Clear Frosted

APPROX. MEASUREMENTS
Dia 13 in x H 14.5 in
Dia 33 cm x H 41 cm



De La Espada Showcase — Lisbon

LIGHTING & MATERIALS

Pendant — Cone
Black / Clear Frosted

APPROX. MEASUREMENTS

Dia 13 in x H 14.5 in
Dia 33 cm H 41 cm



LIGHTING & MATERIALS

Pendant — Cone
Green / Clear Frosted

APPROX. MEASUREMENTS

Dia 13 in x H 13 in
Dia 33 cm x H 41 cm

Halo

by Paul Loebach

Paul Loebach envisioned the Halo series as a graceful exercise in the use of energy-efficient LED technology. The collection, which includes a range of ceiling and wall lights, is distinguished by its use of cascading rings and bars of light.



LIGHTING & MATERIALS

Chandelier — 4 Rings

Brushed Brass

APPROX. MEASUREMENTS

Dia. 47 in × H 42 in

Dia. 120 cm × H 106 cm

Finishes

- Blackened Steel
- Oil-Rubbed Bronze
- Brushed Brass
- Polished Nickel

Canopy



A. Pendant B. Chandelier

- A. 5-inch / 12.7-cm
round in matching metal finish
- B. 10-inch / 25.4-cm
round in matching metal finish

Lamping 120V & 240V

Integrated LED

Details

Materials
Steel, Acrylic

Suspension
1/2-inch / 1.3-cm (for pendant) or 5/8-inch / 1.6-cm (for chandelier) steel stem in matching metal finish.
35-inch / 89-cm length included with lamp.
72-inch / 183-cm length available for additional cost.
Stem length can be adjusted on site.

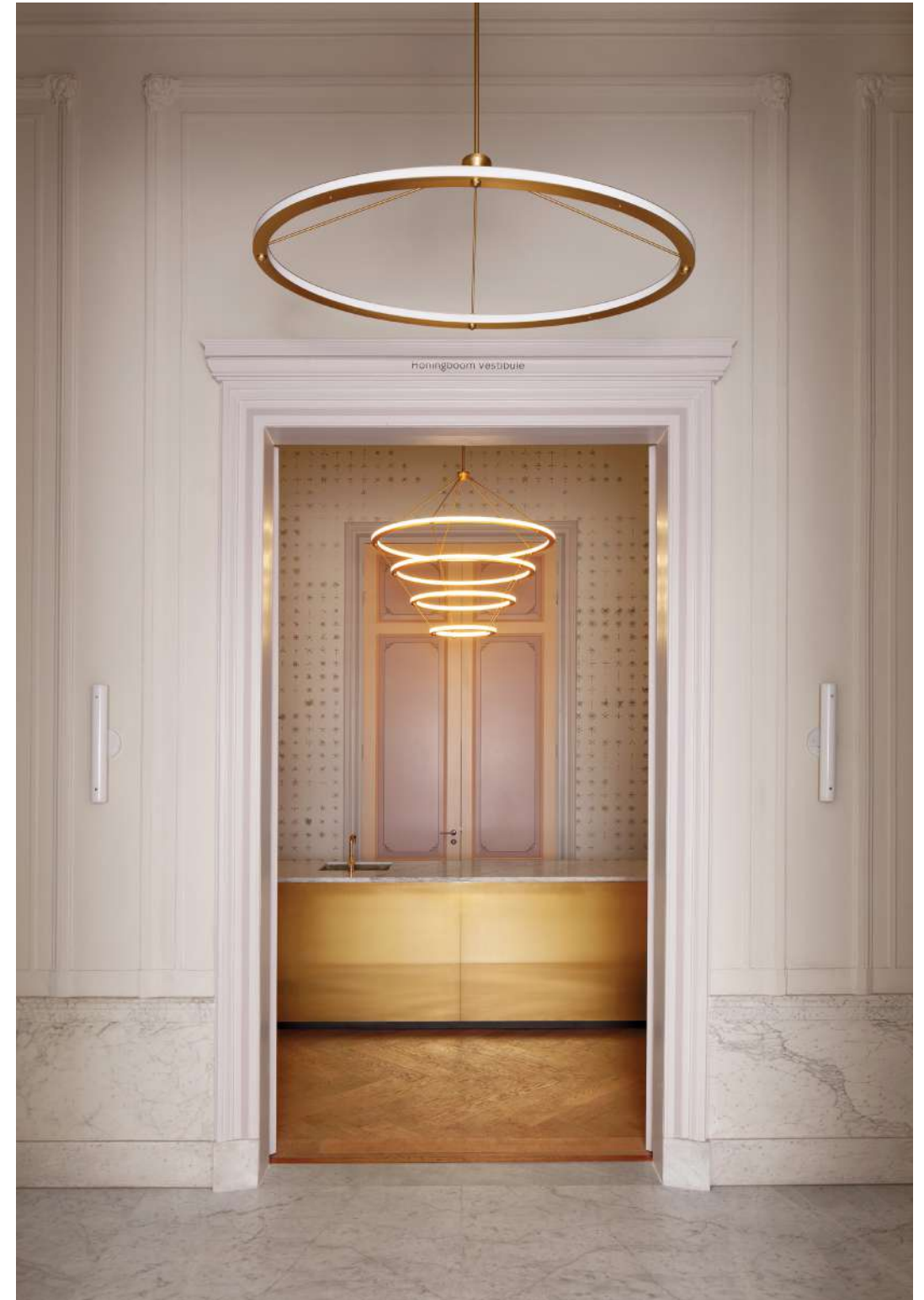
Dimmer Compatibility
120V: Triac, Electronic Low Voltage (ELV)
or 0-10V
240V: Electronic Low Voltage (ELV)
or 0-10V

Year

2011

Designer

Paul Loebach was raised in Cincinnati, Ohio amid the industrial landscape of the American Midwest. Descended from a long line of German woodworkers, his father is a manufacturing engineer who developed new plastic forming technologies for Union Carbide in the 1970s. Paul sees his projects as an idealistic fusion of his family's distant and more recent history. After graduating from the Rhode Island School of Design in 2002, Paul moved to New York City and established a design studio. He specializes in wood furniture and emerging manufacturing technologies.





goop — Santa Monica

LIGHTING & MATERIALS

Circle Pendant
Brushed Brass

APPROX. MEASUREMENTS

Dia. 42 in x H 17 in
Dia. 107 cm x H 42 cm



LIGHTING & MATERIALS

Sconce — 32 inches
Polished Nickel

APPROX. MEASUREMENTS

H 2.8 in x W 31.3 in x D 1.6 in
H 7 cm x W 79 cm x D 4 cm



Private Residence — Brentwood

LIGHTING & MATERIALS

Circle Pendant
Blackened Steel

APPROX. MEASUREMENTS

Dia. 42 in x H 17 in
Dia. 107 cm x H 42 cm



LIGHTING & MATERIALS

Chandelier — 3 Rings
Polished Nickel

APPROX. MEASUREMENTS

Dia. 42 in x H 36 in
Dia. 107 cm x H 91 cm



LIGHTING & MATERIALS
Chandelier — 4 Rings
Black

APPROX. MEASUREMENTS
Detail



LIGHTING & MATERIALS
Custom Configuration
Brushed Brass

APPROX. MEASUREMENTS
Custom Configuration



LIGHTING & MATERIALS

Rectangle Pendant
Polished Nickel

APPROX. MEASUREMENTS

L 58 in x W 25 in x H 14.5 in
L 147 cm x W 64 cm x H 37 cm



Fashion Tower — New York

LIGHTING & MATERIALS

Halo Chandelier - 4 Rings
Brushed Brass

APPROX. MEASUREMENTS

Dia 47 in x H 42 in
Dia 120 cm x H 106 cm

Knotty Bubbles

by Lindsey Adelman

Inspired by Japanese packaging, buoys, and shibari, Knotty Bubbles is a sculptural light made of hand-blown glass “bubbles” bound together with knotted rope.



LIGHTING & MATERIALS

Chandelier - 3 Lg, 2 Sm Bubbles, 5 Barnacles

Khaki / Clear

APPROX. MEASUREMENTS

Dia. 43 in × H Custom

Dia. 109 cm × H Custom

Finishes

● Antique Brass

Glass Colors

○ Clear

○ Opal

Barnacle Colors

● Black with Gold

Rope Colors

● Natural

● Khaki

Canopy



A. 5-inch / 12.7-cm round
in matching metal finish

Lamping



A. 120V



B. 240V

Clear

A. 4.5-Watt LED, Clear,
A15 Bulb, E12 Base

B. 4.5-Watt LED, Clear,
A15 Bulb, E14 Base



A. 120V



B. 240V

Opal

A. 4.5-Watt LED, Frosted,
A15 Bulb, E12 Base

B. 4.5-Watt LED, Frosted,
A15 Bulb, E14 Base

Details

Materials

Glass, Rope,
Steel, Brass

Suspension

Chandelier: Rope and marine hardware. Custom length.

Pendant: Rope and marine hardware. Custom length.

Dimmer Compatibility

Triac or Electronic Low Voltage (ELV)

Year

2010

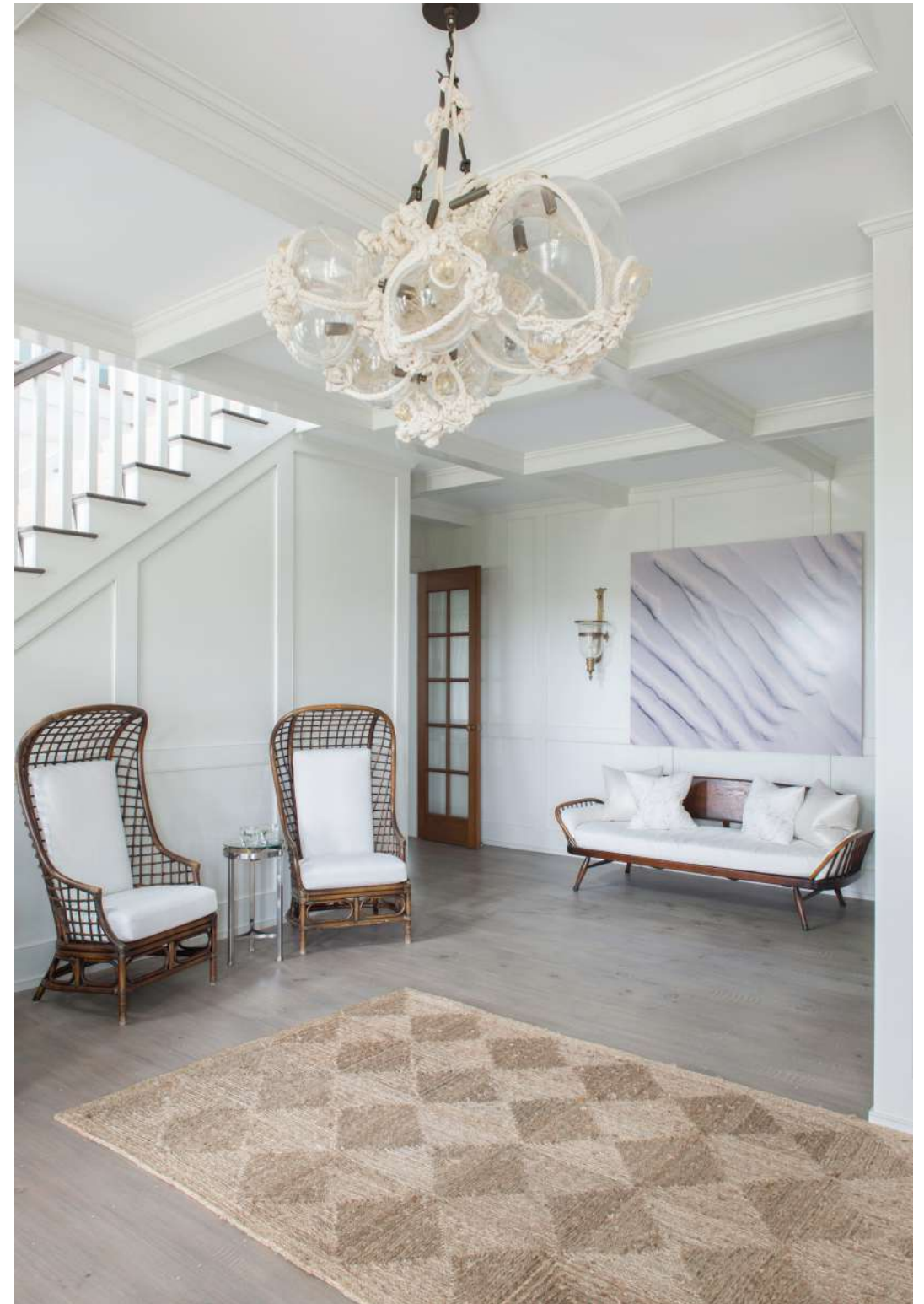
Designer

Lindsey Adelman lives and works in her hometown of New York City. She has specialized in lighting design since 1996. Founded in 2006, her studio has grown into a group of 40 with a recent location opening in Los Angeles.

The lighting collections are driven by developing industrial modular systems to capture the ephemeral, fleeting beauty of nature. Adelman first discovered Industrial Design when meeting a woman carving foam French Fries for an exhibition at her editorial job at the Smithsonian and went straight to study ID at the Rhode Island School of Design. She continues to be challenged and seduced by the immaterial substance of light and is obsessed with creating forms that maximize light's sensual effect and highlight emptiness.

Adelman's work has been exhibited at the Cooper-Hewitt National Design Museum, Design Miami, Nilufar Gallery, and BDDW, among others. For many years, the studio has embraced a philanthropic mission supporting the Robin Hood Foundation to fight poverty in New York City. Adelman credits much of the studio's current success to this desire to make an impact.

Adelman lives with her designer husband Ian and their son Finn in Brooklyn.





Private Residence — Bridgehampton

LIGHTING & MATERIALS

Chandelier — 1 Large, 2 Small Bubbles, 5 Barnacles
Natural / Opal

APPROX. MEASUREMENTS

Dia. 20 in x H Custom
Dia. 50 cm x H Custom



LIGHTING & MATERIALS

Chain — 1 Large, 2 Small Bubbles
Natural / Opal

APPROX. MEASUREMENTS

L Custom x W 17 in x H Custom
L Custom x W 43 cm x H Custom



LIGHTING & MATERIALS

Custom Configuration
Khaki / Clear

APPROX. MEASUREMENTS

Detail



Private Residence — Amagansett

LIGHTING & MATERIALS

Chandelier - 1 Lg, 2 Sm Bubbles, 5 Barnacles
Natural / Opal

APPROX. MEASUREMENTS

Dia 20 in x H Custom
Dia 50 cm x H Custom



LIGHTING & MATERIALS

Pendant — Small
Khaki / Opal

APPROX. MEASUREMENTS

Dia. 11 in x H 19 in
Dia. 28 cm x H 48 cm



Private Residence — East Hampton

LIGHTING & MATERIALS

Sconce — Small
Natural / Opal

APPROX. MEASUREMENTS

H 19 in x W 11 in x D 11 in
H 48 cm x W 28 cm x D 28 cm

Maxhedron

by Bec Brittain

Bec Brittain's Maxhedron is an enigmatic, sleek polyhedron with mirrored panels and plated brass hardware. When turned off, the partly translucent Maxhedron reflects and blends with its environment; when the light is on, its dazzling constellation of bulbs projects bands of light onto its surroundings.



LIGHTING & MATERIALS

30 inches — Horizontal

Oil-Rubbed Bronze / Transparent Mirror

APPROX. MEASUREMENTS

L 30 in × W 14 in × H 16 in

L 77 cm × W 35 cm × H 41 cm

Finishes

- Blackened Steel
- Oil-Rubbed Bronze
- Brushed Brass

Glass Options

- Transparent Mirror

Canopy



A.

A. 5-inch / 12.7-cm round in matching metal finish (1-inch / 2.5-cm high)

Lamping



A. 120V



B. 240V

A. 1.5-Watt LED G4 LED
B. 1.5-Watt LED G4 LED

Details

Materials

Brass, Steel,
Two-Way Mirror

Suspension

1/2-inch / 1.3-cm aluminum stem in matching metal finish.
35-inch / 89-cm length included with lamp.
72-inch / 183-cm length available for additional cost.
Stem length can be adjusted on site.

Dimmer Compatibility

Triac or Electronic Low Voltage (ELV)

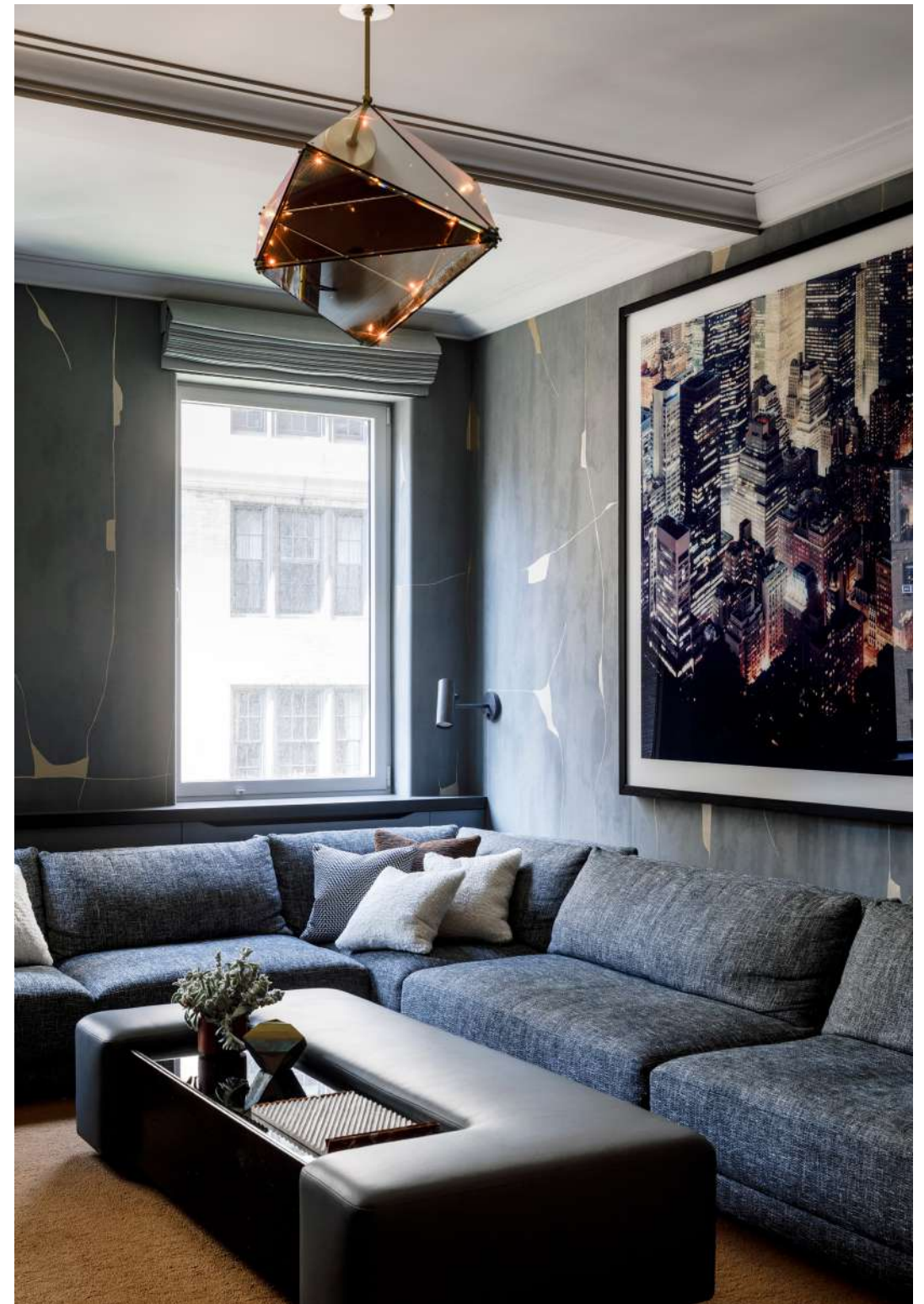
Year

2014

Designer

For Bec Brittain, designing lighting and products is the logical evolution of a lifelong interest in form, materials, and technology. She grew up surrounded by creative people: her mother is an artist; her father had a woodworking business; and her paternal grandparents (as well as her step-grandfather) were architects. After deciding that her initial interest in studying fashion design would lead to a career that was too trend-focused, Bec studied product design at Parsons before exploring the philosophy of design at NYU and the concepts behind architecture at the Architectural Association. An early job making custom door hardware led Bec to the realization that she loved the process of making things in metal, and a subsequent job as design director for Lindsey Adelman, the noted lighting designer, affirmed Bec's view that lighting embodied not just the challenges of engineering and technology, but also the playfulness of form and the richness of materials. By 2011, Bec had opened her own studio in Brooklyn and designed the critically-acclaimed SHY light, named for the initials of her grandmother; the architect Sarah Hitchcock Yerkes, one of the first women to receive a master's degree in architecture from Harvard.

Bec's work has been featured in The New York Times, Architectural Digest, Elle Décor, Case da Abitare, and Wallpaper magazines, among many others. Her limited edition designs have been shown at Patrick Parrish Gallery, and her work was featured in a 2018 exhibition organized by Istdibs' in Milan during the Salone del Mobile. Her clients include today's top architects and interior designers, and her work appears in commercial and residential projects around the world.





Private Residence — San Francisco

LIGHTING & MATERIALS
 42 inches — Horizontal
 Blackened Steel / Transparent Mirror

APPROX. MEASUREMENTS
 L 42 in x W 18.5 in x H 21 in
 L 107 cm x W 47 cm x H 53 cm



LIGHTING & MATERIALS
 30 inches — Vertical
 Blackened Steel / Transparent Mirror

APPROX. MEASUREMENTS
 L 16 in x W 14 in x H 30 in
 L 40 cm x W 35 cm x H 77 cm



LIGHTING & MATERIALS
24 inches — Horizontal
Brushed brass/Transparent mirror

APPROX. MEASUREMENTS
L 24 in x W 11 in x H 13 in
L 61 cm x W 28 cm x H 32 cm



Roll & Hill — New York

LIGHTING & MATERIALS
30 inches — Vertical
Oil-rubbed Bronze / Transparent Mirror

APPROX. MEASUREMENTS
L 16 in x W 14 in x H 30 in
L 40 cm x W 35 cm x H 77 cm

Mini Endless

by Jason Miller

Like Endless, Jason Miller's Mini collection originated with the idea of light fixture as architectural element, though its shape, scale, and construction are directly inspired by wooden ships' masts. Before advanced materials and industrial production, wooden sailing ships were the engineering marvels of their time. By necessity, the construction was as inventive as it was beautiful.



LIGHTING & MATERIALS

Pendant — 63 inches

Polished Brass

APPROX. MEASUREMENTS

Dia. 3 in × L 63 in

Dia. 8 cm × L 160 cm

Finishes – Hardware

- Blackened Brass
- Polished Brass
- Oil-Rubbed Bronze
- Polished Nickel

Finishes – Body

- Stained Oak
- Gray

Canopy



A. Mini Endless Pendant

A. 6 × 18-inch / 15.2-cm × 45.7-cm rectangle in matching metal finish



B & C. Mini Endless Double Pendant

B. 5-inch / 12.7-cm round canopy in matching metal finish

C. 2-inch / 5-cm round hanging hardware in matching metal finish

Lamping 120V & 240V

Integrated LED

Details

Materials

Acrylic, Brass, Wood

Suspension

Mini Endless: 96-inch / 244-cm cord and aircraft cable. Length can be adjusted on site.

Dimmer Compatibility

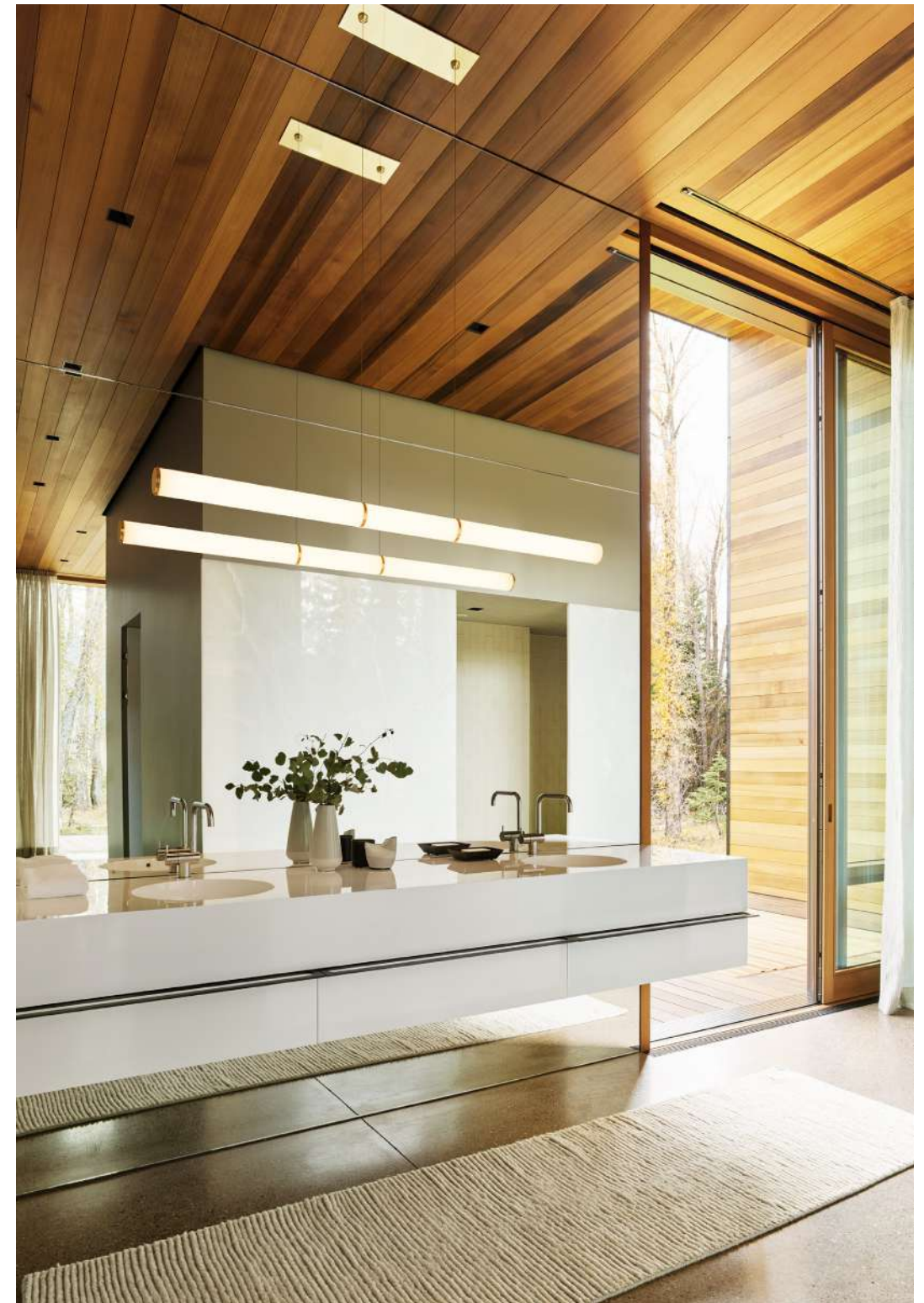
Sconce, Pendant 120V, Mini Farrago 120V/240V: Triac, Electronic Low Voltage (ELV) or 0-10V
Sconce, Pendant 240V: Electronic Low Voltage (ELV) or 0-10V
Double Pendant 120V: Triac or Electronic Low Voltage (ELV)
Double Pendant 240V: Electronic Low Voltage (ELV)

Year

2012

Designer

Jason Miller is a Brooklyn-based designer and the founder of Roll & Hill. Born in New York and raised in Darien, Connecticut, Jason's suburban upbringing heavily influenced his early, more conceptual pieces — duct-taped chairs and cracked vases, among them — and continues to inform the elegant, historically rich work that has become his signature. Jason received an MFA in painting and spent time in both the art and advertising worlds, but soon realized he preferred making things to documenting them. His designs — like a mirror whose photographic surface recalls a painted landscape — still often reflect those early preoccupations, but each is a functional object, with a kind of beauty and wit. Today, Jason runs both Jason Miller Studio and Roll & Hill from his headquarters in Sunset Park, Brooklyn.





LIGHTING & MATERIALS

Double Pendant—89 inches/Polished Brass/Stained Oak
 Pendant — 63 inches / Polished Nickel

APPROX. MEASUREMENTS

L 89 in x W 3 in x H 6 in (Double Pendant)
 Dia. 3 in x L 63 in (Pendant)



LIGHTING & MATERIALS

Sconce
 Polished Nickel

APPROX. MEASUREMENTS

H 21.5 in x W 5 in x D 3.5 in
 H 55 cm x W 13 cm x D 9 cm



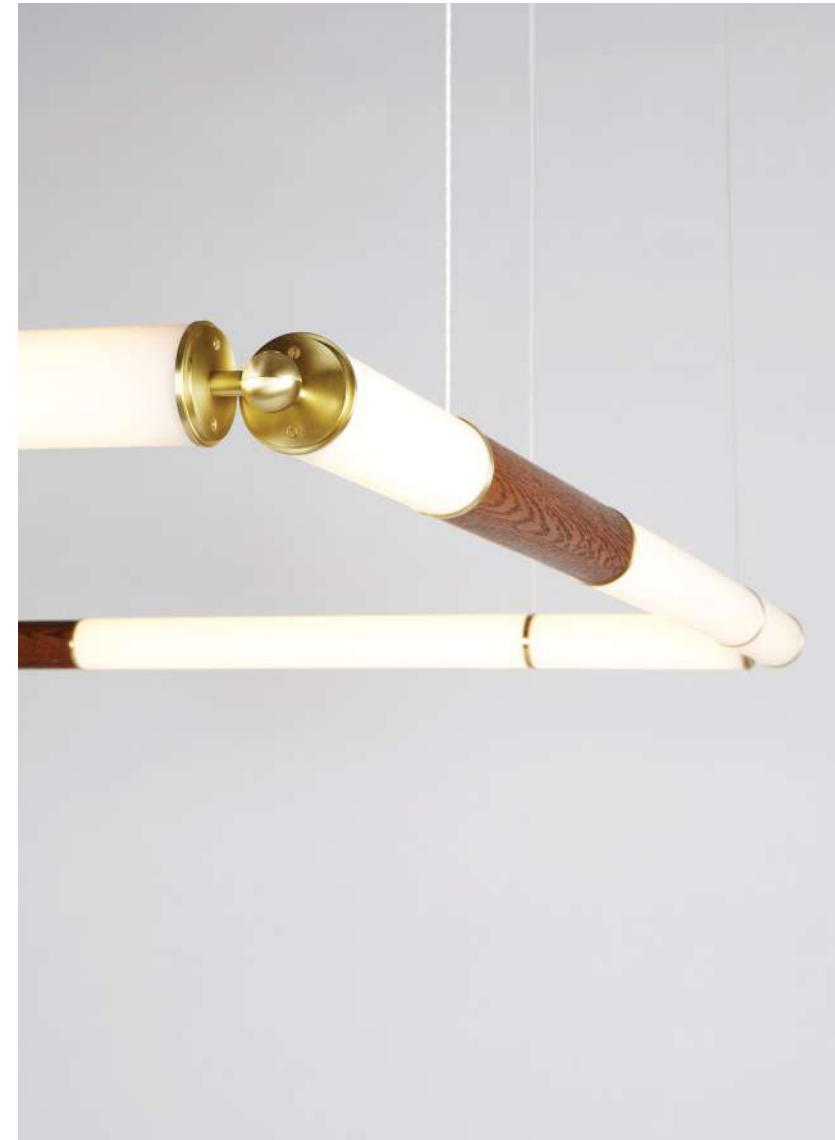
Private Residence — New York

LIGHTING & MATERIALS

Custom Configuration
Brushed Brass / Stained Oak

APPROX. MEASUREMENTS

Custom



LIGHTING & MATERIALS

Custom Configuration
Brushed Brass / Stained Oak

APPROX. MEASUREMENTS

Detail

Modo

by Jason Miller

The Modo series was inspired by the kinds of ready-made, off-the-shelf parts that can be found at inexpensive lighting stores. Unlike those, however, Modo is painstakingly engineered and custom CNC-milled from solid aluminum. The spoke-and-hub system allows for dozens of configurations, making Modo as versatile as it is beautiful.



LIGHTING & MATERIALS

Chandelier — 4 Sided, 15 Globes

Black / Smoke

APPROX. MEASUREMENTS

L 39 in × W 39 in × H 32 in

L 100 cm × W 100 cm × H 81 cm

Finishes

- Black
- Brushed Brass
- Bronze
- Polished Nickel

Glass Colors

- Smoke
- Clear
- Cream

Canopy



A

A. 5-inch / 12.7-cm round in matching metal finish

Lamping



A. 120V

B. 240V

Smoke / Clear

A. 6-Watt LED, Half-Silver, G25 Globe, E26 Base
B. 6-Watt LED, Half-Silver, G25 Globe, E27 Base



C. 120V

D. 240V

Cream

C. 6-Watt LED, Frosted, A19 Shape, E26 Base
D. 6-Watt LED, Frosted, A19 Shape, E27 Base

Desk Lamp 120V & 240V

Integrated LED

Details

Materials

Machined Aluminum,
Glass

Suspension

1/2-inch / 1.3-cm aluminum stem in matching metal finish.
35-inch / 89-cm length included with lamp.
72-inch / 183-cm length available for additional cost.
Stem length can be adjusted on site.

Dimmer Compatibility

Triac or Electronic Low Voltage (ELV)
Table Lamp: Integrated dimmer on cord

Year

2009

Designer

Jason Miller is a Brooklyn-based designer and the founder of Roll & Hill. Born in New York and raised in Darien, Connecticut, Jason's suburban upbringing heavily influenced his early, more conceptual pieces — duct-taped chairs and cracked vases, among them — and continues to inform the elegant, historically rich work that has become his signature. Jason received an MFA in painting and spent time in both the art and advertising worlds, but soon realized he preferred making things to documenting them. His designs — like a mirror whose photographic surface recalls a painted landscape — still often reflect those early preoccupations, but each is a functional object, with a kind of beauty and wit. Today, Jason runs both Jason Miller Studio and Roll & Hill from his headquarters in Sunset Park, Brooklyn.





Private Residence — Uvita

LIGHTING & MATERIALS

Desk Lamp
Polished Nickel / Cream

APPROX. MEASUREMENTS

H 17 in x W 11 in x D 8.5 in
H 43 cm x W 28 cm x D 21 cm



Private Residence — Miami

LIGHTING & MATERIALS

Chandelier — Diamond, 13 Globes
Brushed Brass / Smoke

APPROX. MEASUREMENTS

L 58 in x W 32 in x H 26 in
L 147 cm x W 81 cm x H 66 cm



Private Residence — Palm Beach

LIGHTING & MATERIALS
 Chandelier — 4 Sided, 15 Globes
 Brushed Brass / Cream

APPROX. MEASUREMENTS
 L 39 in x W 39 in x H 32 in
 L 100 cm x W 100 cm x H 81 cm



De La Espada showcase — Lisbon

LIGHTING & MATERIALS
 Chandelier — 3 Sided, 10 Globes
 Black / Smoke

APPROX. MEASUREMENTS
 L 42 in x W 37 in x H 19 in
 L 106 cm x W 94 cm x H 48 cm



LIGHTING & MATERIALS
Sconce — 2 Globes
Bronze / Cream

APPROX. MEASUREMENTS
H 21 in x W 6.5 in x D 7.5 in
H 53 cm x W 16 cm x D 19 cm



LIGHTING & MATERIALS
Sconce — 3 Globes
Black / Clear

APPROX. MEASUREMENTS
H 18 in x W 6.5 in x D 10 in
H 46 cm x W 16 cm x D 25 cm



LIGHTING & MATERIALS
Desk Lamp
Brushed Brass / Smoke

APPROX. MEASUREMENTS
H 17 in x W 11 in x D 8.5 in
H 43 cm x W 28 cm x D 21 cm



LIGHTING & MATERIALS
Ceiling Mount — 5 Globes
Black / Smoke

APPROX. MEASUREMENTS
L 16 in x W 16 in x H 12 in
L 16 in x W 16 in x H 12 in



LIGHTING & MATERIALS

Modo Stack
Black / Smoke

APPROX. MEASUREMENTS

Custom Configuration



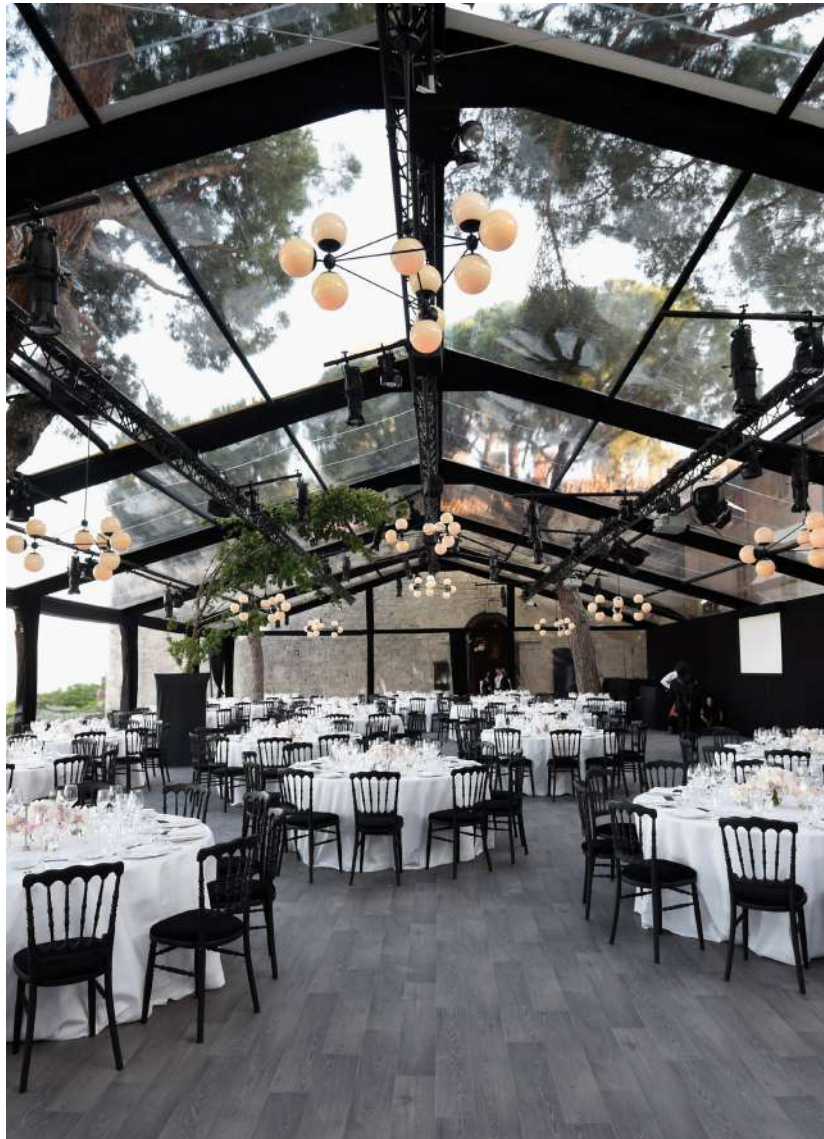
Private Residence — New York

LIGHTING & MATERIALS

Ceiling Mount — 5 Globes (2)
Black / Smoke

APPROX. MEASUREMENTS

L 16 in x W 16 in x H 12 in
L 41 cm x W 41 cm x H 30 cm



Cannes Film Festival — Cannes

LIGHTING & MATERIALS

Chandelier — 3 Sided, 10 Globes (9)
Black / Cream

APPROX. MEASUREMENTS

L 42 in x W 37 in x H 19 in
L 106 cm x W 94 cm x H 48 cm



LIGHTING & MATERIALS

Pendant — 2 Globes
Black / Cream

APPROX. MEASUREMENTS

L 56 in x W 6.5 in x H 14 in
L 142 cm x W 17 cm x H 36 cm

Moonrise

by Lara Bohinc

Moonrise is inspired by the lunar phases, with round and half round shapes composed in playful compositions that shift from every angle like the Moon's changing shapes throughout its cycle.



LIGHTING & MATERIALS

Chandelier

Brushed Brass

APPROX. MEASUREMENTS

L 35.1 in x W 35.1 in x H 25.3 in

L 89.3 cm x W 89.3 cm x H 64.3 cm

Finishes

- Matte Black
- Brushed Brass

Canopy



A

A, 5-inch / 12.7-cm round
in matching metal finish

Details

Materials

Acrylic, Steel, Aluminum

Lamping 120V & 240V

Integrated LED

Suspension

1/2-inch / 1.3-cm steel stem in matching metal finish.
35-inch / 89-cm length included with lamp.
72-inch / 183-cm length available for additional cost.
Stem length can be adjusted on site.

Dimmer Compatibility

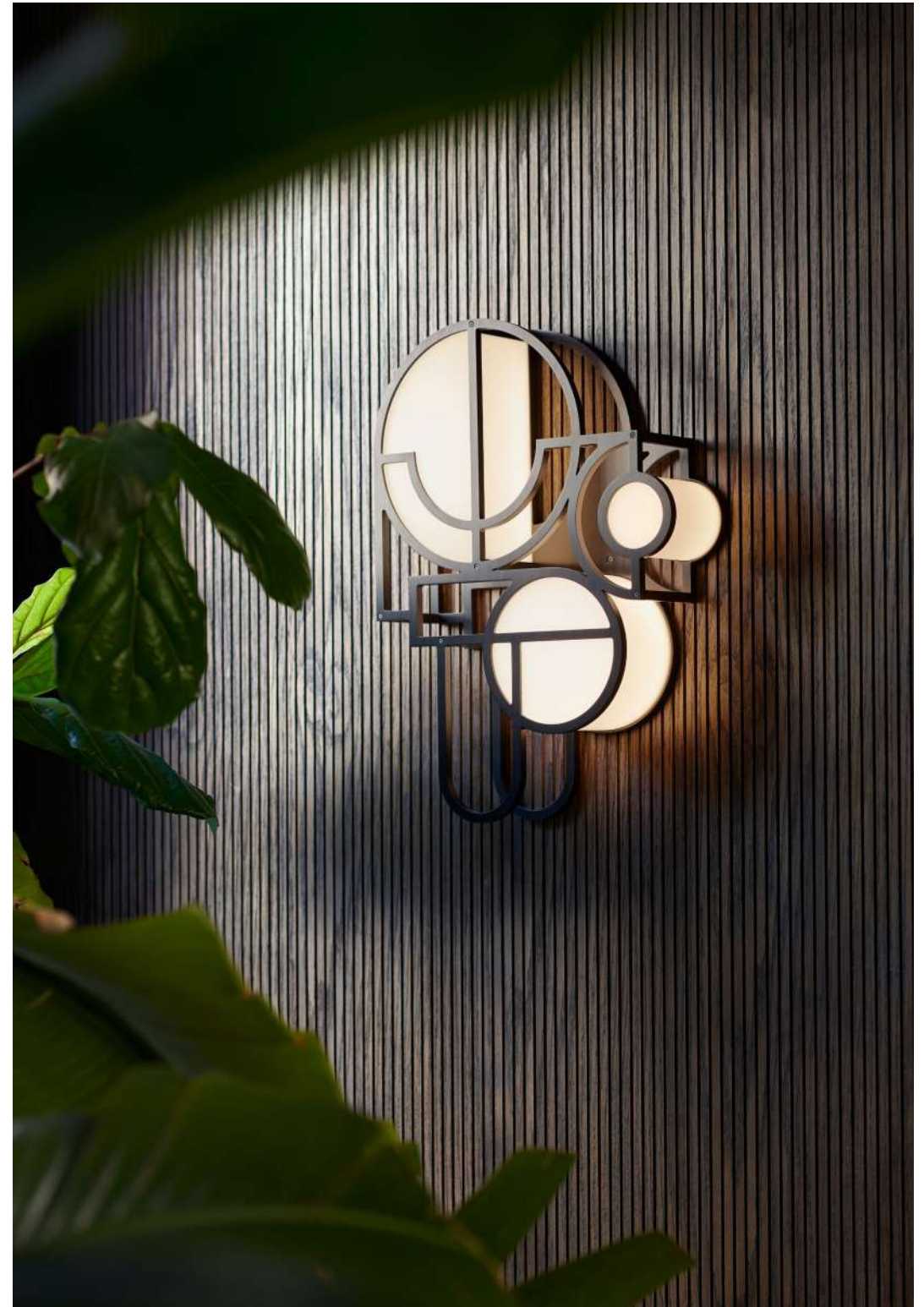
120V: Triac, Electronic Low Voltage (ELV)
or 0-10V
240V: Electronic Low Voltage (ELV) or 0-10V

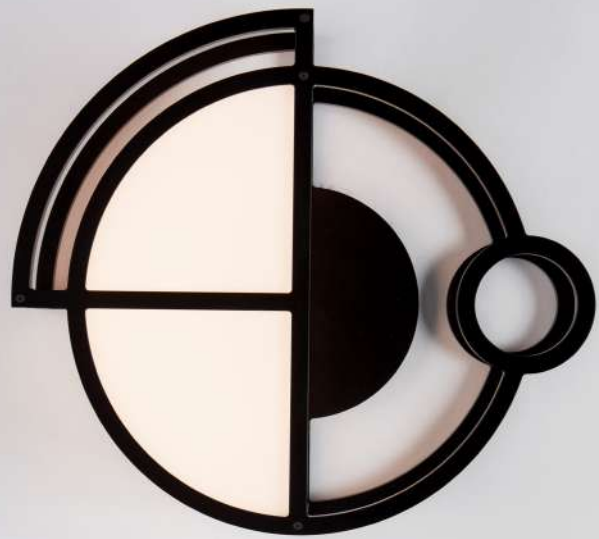
Year

2021

Designer

Lara Bohinc MBE studied Industrial Design at the Ljubljana Academy of Fine Arts, followed by MA Metalwork and Jewelry at Royal College of Art London. After graduation, she won British Fashion Council's New Generation Award and launched her own studio. She was design consultant for many luxury brands, amongst them Montblanc, Gucci and most notably Cartier; a position she held for over a decade. A mark of her work is versatility. A passionate believer in the universality of good design, she always looks to bridge the divide across different mediums of furniture, objects, jewelry, and textiles. Bohinc's ability to create work with iconic beauty is rooted in her familiarity with materials and manufacturing approaches. While retaining a deep respect for the traditional principles of her craft, she has also drawn on her knowledge of industrial techniques, fusing modernity of style with function, to achieve a contemporary elegance. The same principles apply in all of her designs—use of the finest materials, and an obsession with deconstruction and reconfiguration of pure geometric form. Overall, Bohinc's signature style is a mix of contradictions: bold yet light, graphic yet fluid, angular yet feminine.





LIGHTING & MATERIALS

Sconce 01

Matte Black

APPROX. MEASUREMENTS

L 4 in x W 12.1 in x H 10.8 in

L 10.16 cm x W 30.7 cm x H 27.5 cm



LIGHTING & MATERIALS

Sconce 02

Matte Black

APPROX. MEASUREMENTS

L 4 in x W 13.6 in x H 19.3 in

L 10.16 cm x W 34.5 cm x H 49 cm



LIGHTING & MATERIALS

Chandelier

Brushed Brass

APPROX. MEASUREMENTS

Detail



LIGHTING & MATERIALS

Sconce 02

Brushed Brass

APPROX. MEASUREMENTS

L 4 in x W 13.6 in x H 19.3 in

L 10.16 cm x W 34.5 cm x H 49 cm



LIGHTING & MATERIALS

Chandelier
Matte Black

APPROX. MEASUREMENTS

L 35.1 in x W 35.1 in x H 25.3 in
L 89.3 cm x W 89.3 cm x H 64.3 cm



LIGHTING & MATERIALS

Sconce 01
Brushed Brass

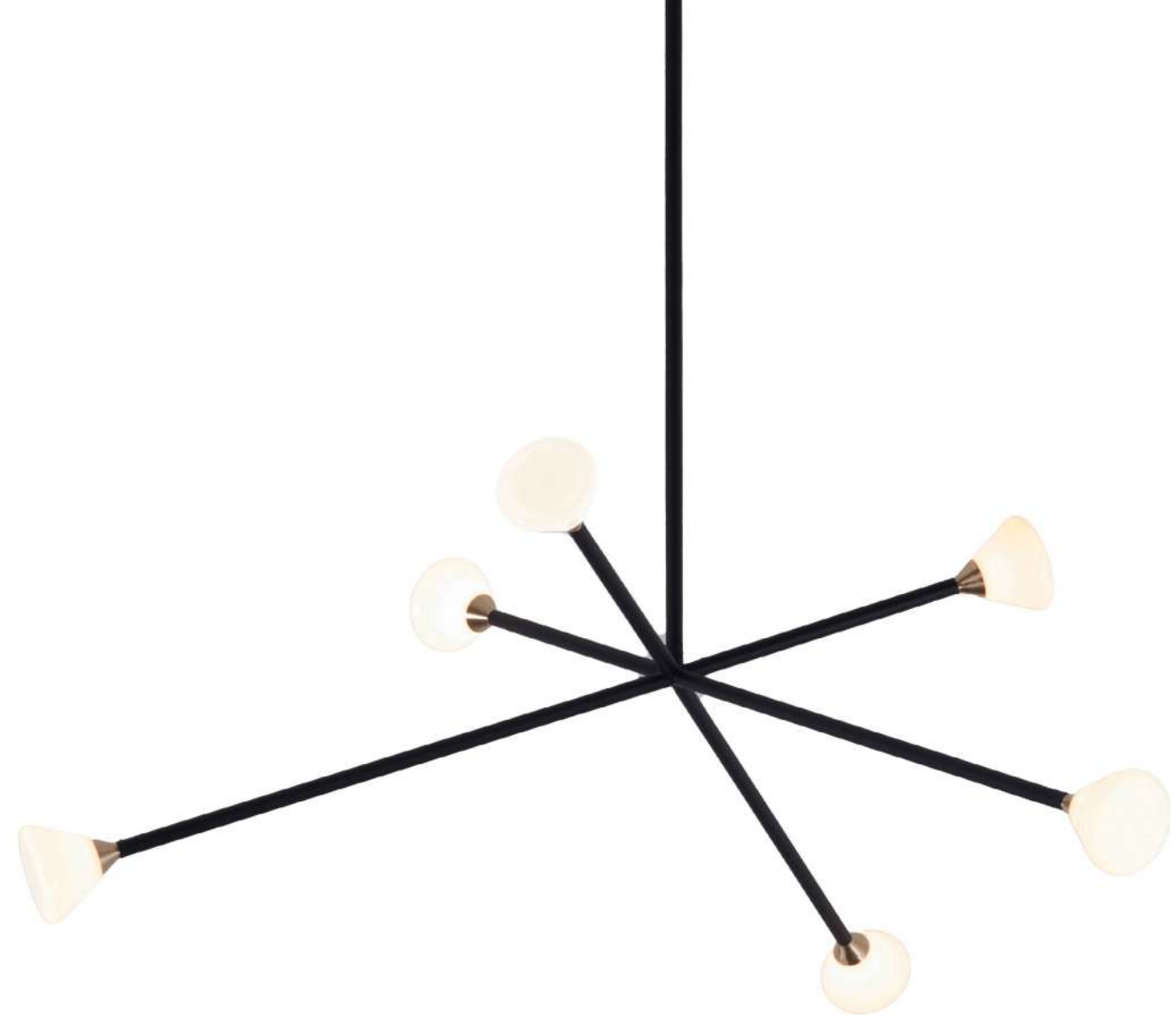
APPROX. MEASUREMENTS

L 4 in x W 12.1 in x H 10.8 in
L 10.16 cm x W 30.7 cm x H 27.5 cm

Nova

by McKenzie & Keim

The Nova Chandelier is a centerpiece fixture with an elegant and energetic composition. This contemporary chandelier branches out from a central point in a pure, geometric manner. It features hand-blown opal glass shades that house powerful, dimmable LEDs.



LIGHTING & MATERIALS

Chandelier — 6 Lights

Matte Black / Brushed Brass

APPROX. MEASUREMENTS

L 33 in x W 29 in x D 12.5 in

L 84 cm x W 74 cm x D 32 cm

Finishes - Armature

- Matte Black
- Matte Ivory
- Brushed Brass

Finishes - Fittings

- Brushed Brass

Canopy



A

A. 5-inch / 12.7-cm round in matching metal finish

Lamping 120V & 240V

Integrated LED

Details

Materials

Brass, Aluminum, Glass

Suspension

1/2-inch brass stems (2) in matching metal finish.
35-inch / 89-cm length included with lamp.
72-inch / 183-cm length available for additional cost.
Length can be adjusted on site.

Dimmer Compatibility

Triac or Electronic Low Voltage (ELV)

Year

2019

Designer

Taylor McKenzie-Veal and Brendan Keim started their eponymous studio to bring their designs to life and into people's homes. After years of pursuing their own careers, they joined forces, fusing their knowledge of materials, production, technology and design into one studio. McKenzie & Keim was born in 2016, and operates today from their location in the Logan Square neighborhood of Chicago, Illinois.





Roll & Hill — New York

LIGHTING & MATERIALS

Chandelier — 9 Lights
 Custom Finish

APPROX. MEASUREMENTS

L 45 in x W 40 in x H 14 in
 L 114 cm x W 102 cm x H 36 cm



Sconce 02 — Matte Black

LIGHTING & MATERIALS

Chandelier — 9 Lights
 Matte Black / Brushed Brass

APPROX. MEASUREMENTS

L 45 in x W 40 in x H 14 in
 L 114 cm x W 102 cm x H 36 cm



LIGHTING & MATERIALS
Chandelier — 6 Lights
Matte Black / Brushed Brass

APPROX. MEASUREMENTS
L 33 in x W 29 in x H 12.5 in
L 84 cm x W 74 cm x H 32 cm



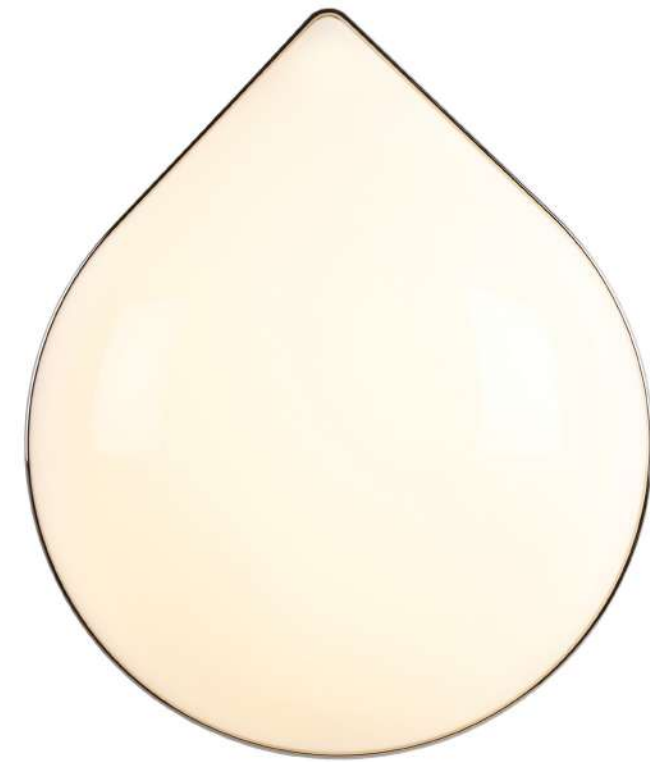
LIGHTING & MATERIALS
Chandelier — 9 Lights
Matte Black / Brushed Brass

APPROX. MEASUREMENTS
Detail

Odds & Ends

by Jason Miller

Odds & Ends is a series of wall lights designed in three basic shapes: Teardrop, Rainbow and Aquafresh—so named because it resembles a dab of toothpaste. The series, which is illuminated by LEDs, can be installed in multiples to create large installations of varying designs.



LIGHTING & MATERIALS

Teardrop

Polished Nickel

APPROX. MEASUREMENTS

H 16 in × W 13.5 in × D 4 in

H 41 cm × W 34 cm × D 10 cm

Finishes

● Polished Nickel

● Polished Brass

Lamping 120V & 240V

Integrated LED

Details

Materials

Acrylic. Steel

Dimmer Compatibility

Triac, Electronic Low Voltage (ELV) or 0-10V

Year

2011

Designer

Jason Miller is a Brooklyn-based designer and the founder of Roll & Hill. Born in New York and raised in Darien, Connecticut, Jason's suburban upbringing heavily influenced his early, more conceptual pieces — duct-taped chairs and cracked vases, among them — and continues to inform the elegant, historically rich work that has become his signature. Jason received an MFA in painting and spent time in both the art and advertising worlds, but soon realized he preferred making things to documenting them. His designs — like a mirror whose photographic surface recalls a painted landscape — still often reflect those early preoccupations, but each is a functional object, with a kind of beauty and wit. Today, Jason runs both Jason Miller Studio and Roll & Hill from his headquarters in Sunset Park, Brooklyn.





Holiday House 2014 — New York

LIGHTING & MATERIALS

Rainbow
Polished Nickel

APPROX. MEASUREMENTS

H 7 in x W 13.5 in x D 4 in
H 18 cm x W 34 cm x D 10 cm



Gateaux Thoumieux — Paris

LIGHTING & MATERIALS

Teardrop
Polished Brass (4)

APPROX. MEASUREMENTS

H 16 in x W 13.5 in x D 4 in
H 41 cm x W 35 cm x D 10 cm



LIGHTING & MATERIALS

Aquafresh
Polished Nickel

APPROX. MEASUREMENTS

H 20 in x W 7 in x D 4 in
H 51 cm x W 18 cm x D 10 cm



LIGHTING & MATERIALS

Rainbow
Polished Brass

APPROX. MEASUREMENTS

H 7 in x W 13.5 in x D 4 in
H 18 cm x W 34 cm x D 10 cm

Pole

by Philippe Malouin

Rigid yet flexible, Pole's aluminum construction and modular design allows it to create giant curves. Rather than uplighting or area lighting, Pole illuminates a broad range of space in multiple configurations along walls, floors, and ceilings.

LIGHTING & MATERIALS

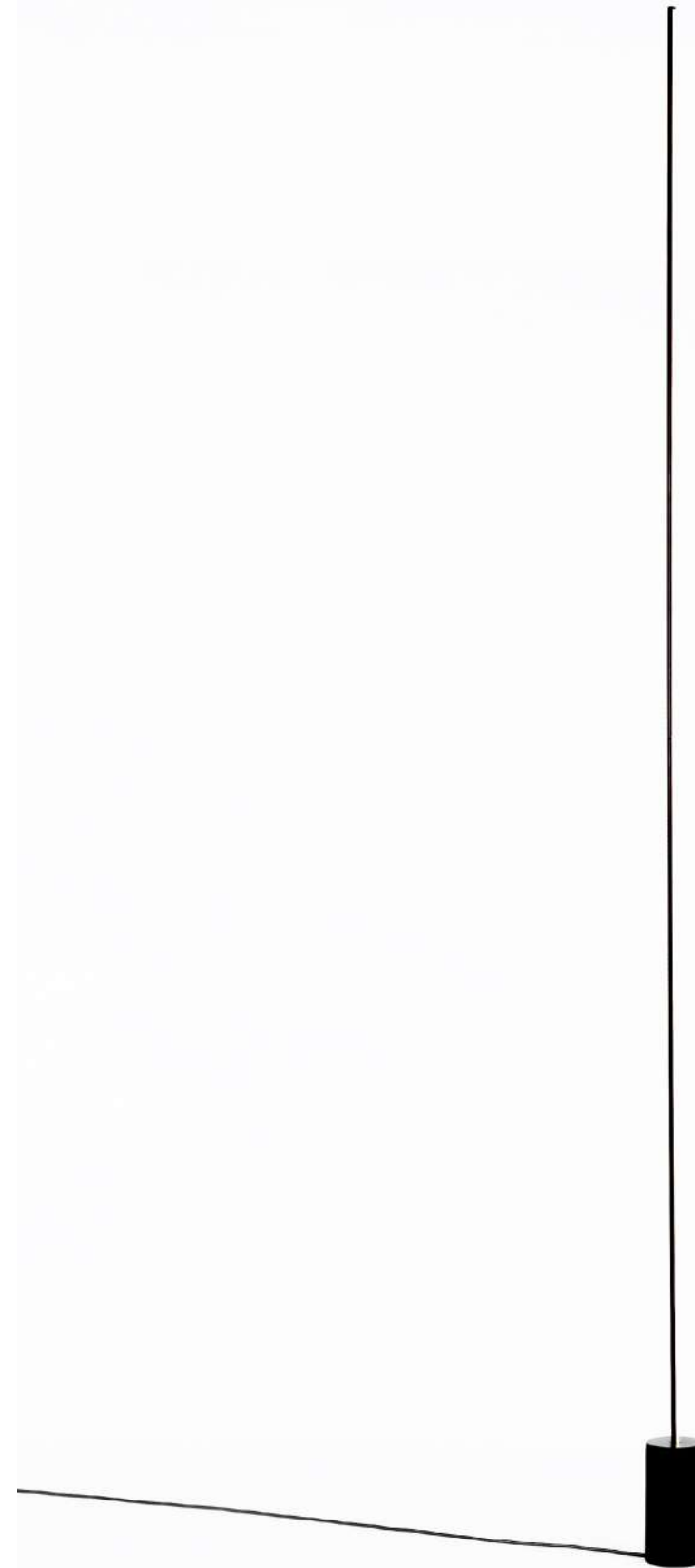
01 Floor — 2 Sections

Black

APPROX. MEASUREMENTS

L 4.1 in x W 4.1 in x H 100 in

L 10.5 cm x W 10.5 cm x H 254 cm



Finishes

- Black

Features

Flexible and modular design
Customizable length and installation along walls, floors, and ceiling

Canopy



- A. 5.1-inch / 13-cm round in matching metal finish (Large)
- B. 4.1-inch / 10.5-cm round in matching metal finish (Small)
- C. 1.8-inch / 4.5-cm round in matching metal finish (Mini)

Lamping 120V & 240V

Integrated LED

Details

Materials

Aluminum, Steel, Silicone

Standard Configurations

- 01 Floor - 2 Sections
- 02 Floor to Floor - 4-8 Sections
- 03 Ceiling to Ceiling - 4-8 Sections
- 04 Floor to Surface - 3-8 Sections
- 05 Surface to Surface - 3-8

Floor Bases

D 5.1 x H 9.9-inch / D 13
x H 25.1-cm (Large) D 4.1
x H 8.1-inch / D 10.5 x H
20.6-cm (Small)

Dimmer Capabilities

Available upon request

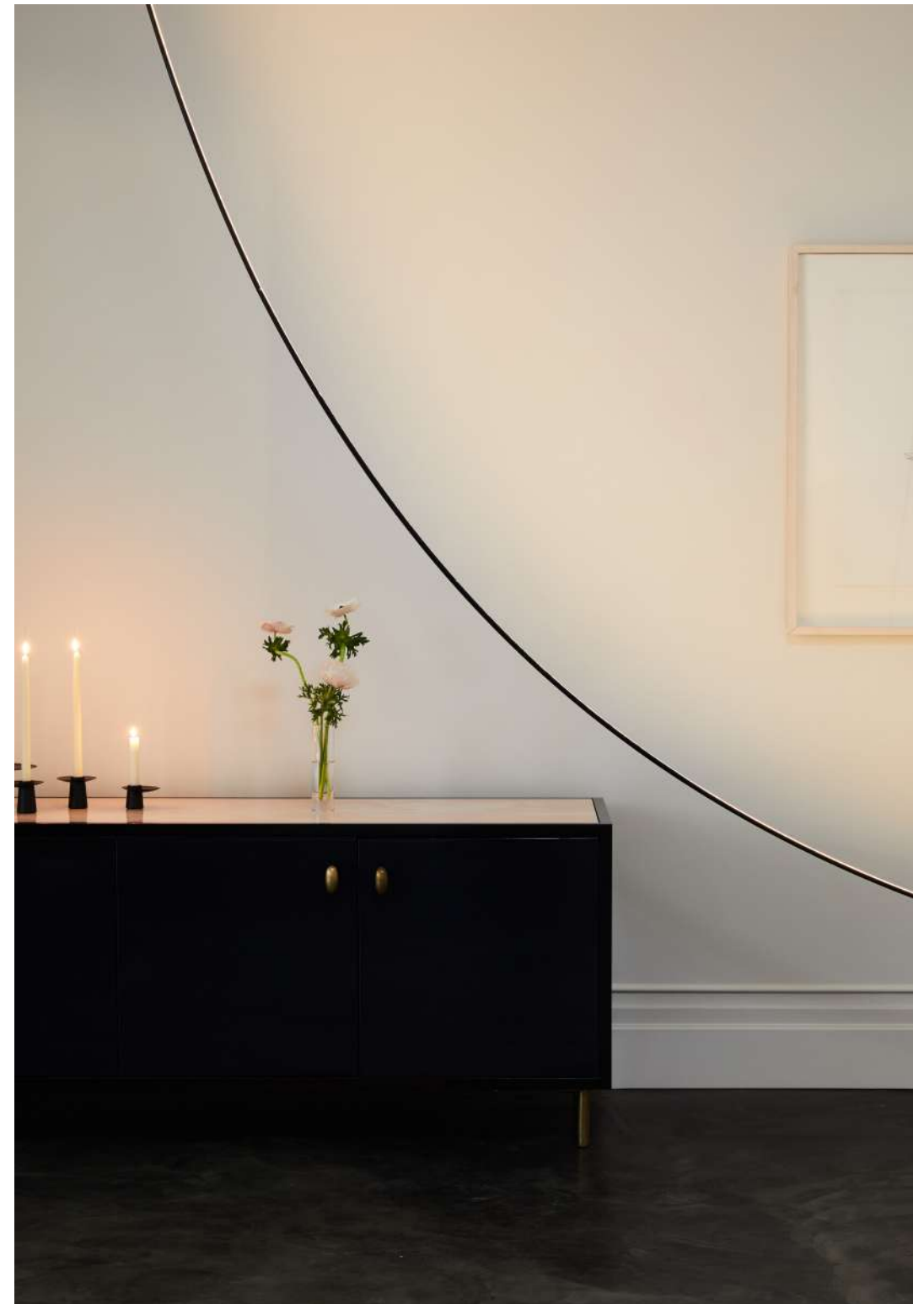
Year

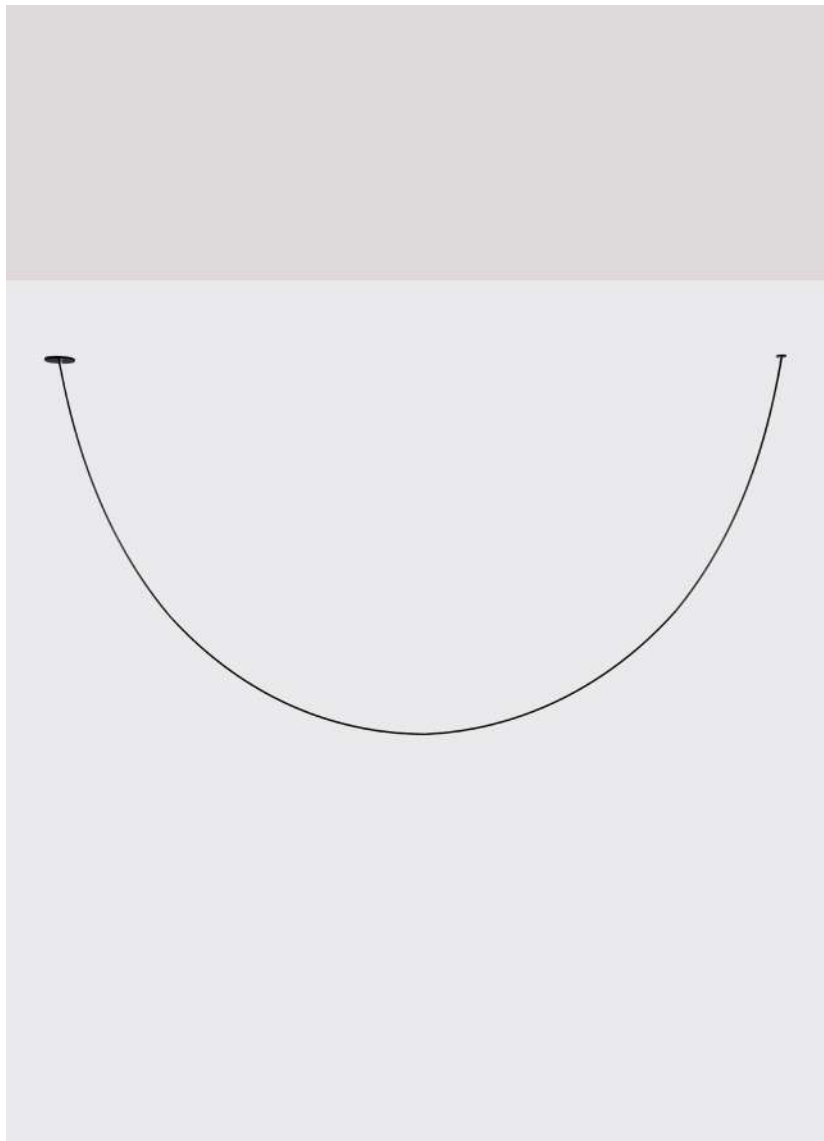
2019

Designer

British-Canadian Philippe Malouin holds a bachelor's degree in Design from the Design Academy Eindhoven. He has also studied at the École Nationale Supérieure de Création Industrielle in Paris and University of Montreal. He set up his studio in 2008 after working for English designer Tom Dixon. Philippe also taught at the Royal College of Art in London between 2012–2015. He is the director of architectural and interiors design practice POST-OFFICE.

His diverse portfolio includes tables, rugs, chairs, lights, art objects and installations. Recently, Philippe won the Wallpaper* Magazine 'Designer of the Year' award. Philippe lives and works in London.





LIGHTING & MATERIALS
03 Ceiling to Ceiling — 4 Sections
Black

APPROX. MEASUREMENTS
L 97 in × W 5 in × H 67 in
L 246 cm × W 13 cm × H 170 cm



LIGHTING & MATERIALS
05 Ceiling to Wall — 3 Sections
Black

APPROX. MEASUREMENTS
L 87 in × W 5 in × H 94 in
L 221 cm × W 13 cm × H 239 cm



Roll & Hill — New York

LIGHTING & MATERIALS
03 Ceiling to Wall — 4 Sections Black

APPROX. MEASUREMENTS
L 87 in x W 5 in x H 85 in
L 221 cm x W 13 cm x H 216



Roll & Hill — New York

LIGHTING & MATERIALS
Multiple Custom Configurations
Black

APPROX. MEASUREMENTS
Custom Configuration



LIGHTING & MATERIALS
 02 Floor to Floor — 4 Sections
 Black

APPROX. MEASUREMENTS
 L 97 in x W 5 in x H 76 in
 L 246 cm x W 13 cm x H 193 cm



Roll & Hill — New York

LIGHTING & MATERIALS
 Multiple Custom Configurations
 Black

APPROX. MEASUREMENTS
 Custom Configuration

Rue Sala

by Jessica Helgerson

Inspired by summers spent at Helgerson's ancestral home in Lyon, France, Rue Sala takes its form from the elegant interiors filled with thin Louis XVI furniture, bronze statuettes, and silky fabrics. Translated into turned metal and hand blown glass fixtures, Rue Sala is a delicate and refined collection with timeless appeal.



LIGHTING & MATERIALS

Six Arm Pendant

Unlacquered Brass/Clear Glass

APPROX. MEASUREMENTS

L 55.9in x W 32.4in x H 36in

L 142cm x W 82.4cm x H 70.5cm

Finishes

- Unlacquered Brass / Clear Glass

Features

The unlacquered brass finish will darken and patina over time. Polishing will restore sheen if desired.

Canopy



A

A. 10-inch / 25.4-cm round in matching metal finish

Lamping 120V & 240V

Integrated LED

Details

Materials

Brass, Glass

Suspension

1/2-inch aluminum stem in matching metal finish. 35-inch length included with lamp. 72-inch length available for additional cost. Stem length can be adjusted on site.

Dimmer Compatibility

120V: Triac or Electronic Low Voltage (ELV)
240V: Electronic Low Voltage (ELV) or 0-10V

Year

2022

Designer

Jessica Helgerson grew up with one foot in Southern California and the other in France. With a French mother and an American father; summers in France, school years in Santa Barbara, she developed a love for both countries, both cultures, and both have had a profound impact on her design work. She briefly worked in an architecture firm after school, but very early in her career felt that there wasn't an office doing quite the kind of work she wanted to do, and so in 2000 she opened her eponymous design studio.

Now, twenty years later, the firm has grown into something that is much more than Jessica, though she remains at the heart of its design direction. Jessica is also a restless dreamer and schemer, and loves imagining new creative avenues for her studio to explore. Some of those have included Front of House - an installation gallery in the front of the JHID office, XUXO - a collaborative importing crafts from indigenous communities in Mexico, The 1% Project - an effort aimed at supporting non-profits working to end homelessness, and most recently the opening of a Paris branch of JHID which is finally allowing her to bring those two halves of herself together in her design work.

Jessica LOVES to design things, and her favorite project is always the one she's working on at the moment.





LIGHTING & MATERIALS
Two Arm Pendant
Unlacquered Brass / Clear Glass

APPROX. MEASUREMENTS
L 55.9in x W 4.3in x H 36in
L 142cm x W 10.9cm x H 70.5cm



LIGHTING & MATERIALS
Corded Sconce
Unlacquered Brass / Clear Glass

APPROX. MEASUREMENTS
H 14.2in x W 4.3in x D 8.8in
H 36cm x W 10.9cm x D 22.3cm



LIGHTING & MATERIALS
Four Arm Pendant
Unlacquered Brass / Clear Glass

APPROX. MEASUREMENTS
Detail



LIGHTING & MATERIALS
Double Arm Sconce
Unlacquered Brass / Clear Glass

APPROX. MEASUREMENTS
H 41.4in x W 4.3in x D 6.5in
H 105.3cm x W 10.9cm x D 16.6cm



Roll & Hill — New York

LIGHTING & MATERIALS
Four Arm Pendant
Unlacquered Brass / Clear Glass

APPROX. MEASUREMENTS
L 55.9in x W 55.9in x H 36in
L 142cm x W 142cm x 70.5cm



LIGHTING & MATERIALS
Double Arm Sconce
Unlacquered Brass / Clear Glass

APPROX. MEASUREMENTS
Detail

Rudi

by Lukas Peet

Rudi, a series of minimalistic pendant lamps, is named after Lukas Peet's father, a jeweler. The lamps are made from bent metal tubes that seamlessly merge with thin handmade cold-cathode lights. Contrasting with the sleek metal, the fixtures hang from hand-knotted cords.



LIGHTING & MATERIALS

Loop 02

Satin Brass

APPROX. MEASUREMENTS

H 36 in × W 11 in × D 1 in

H 92 cm × W 28 cm × D 3 cm

Finishes

● Satin Brass

Canopy



A

A. 9-inch / 22.9-cm round in matching metal finish" to "5-inch / 12.7-cm round in matching metal finish

Details

Materials
Steel, Glass

Suspension
96-inch / 244-cm cord.
Length can be adjusted on site.

Dimmer Compatibility
120V: Triac, Electronic Low Voltage (ELV)
or 0-10V
240V: Electronic Low Voltage (ELV) or 0-10V

Year

2011

Designer

Lukas Peet left his native Vancouver in 2005 to attend the prestigious industrial design program at the Design Academy Eindhoven in the Netherlands. After graduating at the top of his class in 2009, Lukas returned to Canada and founded Lukas/Peet Design, which is active in the fields of product design, interior design, graphic design and public space. His work has been published and exhibited internationally, including his first solo exhibition recently at the Design Exchange in Toronto. Lukas received the inaugural RBC Emerging Designer Award in 2014. He lives and works in Vancouver.





Private Residence — Paris

LIGHTING & MATERIALS

Loop 01 / Satin Brass
 Loop 02 / Satin Brass (2)

APPROX. MEASUREMENTS

H 35 in x W 7 in x D 1 in (Loop 01)
 H 35 in x W 11 in x D 1 in (Loop 02)



LIGHTING & MATERIALS

Loop 03
 Satin Brass

APPROX. MEASUREMENTS

H 26 in x W 7 in x D 1 in
 H 66 cm x W 18 cm x D 3 cm



Private Residence — Miami

LIGHTING & MATERIALS

Loop 02 (6)
Satin Brass

APPROX. MEASUREMENTS

H 35 in x W 11 in x D 1 in
H 89 cm x W 28 cm x D 3 cm



LIGHTING & MATERIALS

Double Loop
Satin Brass

APPROX. MEASUREMENTS

H 36 in x W 7 in x D 11 in
H 92 cm x W 18 cm x D 28 cm

Shape Up

by Ladies & Gentlemen Studio

Shape Up is a versatile lighting series that celebrates bold geometric shapes. The playful juxtapositions upend traditional notions of symmetry in favor of a dynamic spatial harmony. The modular system allows the shapes to be suspended and composed in response to a space's architecture and function, its shades discreetly networked via connecting cords and hubs.



LIGHTING & MATERIALS

3-Piece Chandelier

Brushed Brass

APPROX. MEASUREMENTS

Dimensions Variable

Finishes – Metal Shade

- Blackened Steel
- Brushed Brass
- Brushed Copper

Colors – Glass Shade

- Globe: Gray Fog
- Arc: Celdon
- Cylinder: Midnight

Colors – Cord

- Currant
- Black

Canopy



A B

A. 5-inch / 12.7-cm round in brushed brass
B. 5-inch / 12.7-cm round in brushed brass

Hanging Hardware



A

A. 2 1/2-inch / 6.4-cm vertical round in brushed brass

Features

Pendants feature a counterweight that allows the overall drop length to be adjusted.

Lamping



A. 120V B. 240V

A. 2.6-Watt 12V LED, Clear, G4 Base
B. 2.6-Watt 12V LED, Clear, G4 Base

Details

Materials
Aluminum, Brass, Steel, Glass

Suspension
Pendant: 12-foot cord. Length can be adjusted on site.
Chandelier: 6-foot Cord. Length can be adjusted on site.

Dimmer Compatibility
Triac or Electronic Low Voltage (ELV)

Year

2014

Designer

Ladies & Gentlemen Studio is a Brooklyn-based design studio with a diverse focus. Founded by Dylan Davis & Jean Lee in 2010, L&G Studio's playful explorations in materiality blend their resourceful curiosity with the desire to find unexpected pairings of material and function. The results possess an expressive yet refined purity, and range from jewelry to home furnishings. Their open, multidisciplinary approach to design yields an ever-evolving set of ideas collected from their daily experiments and discoveries.



5-Piece Chandelier; Brushed Brass / Brushed Copper



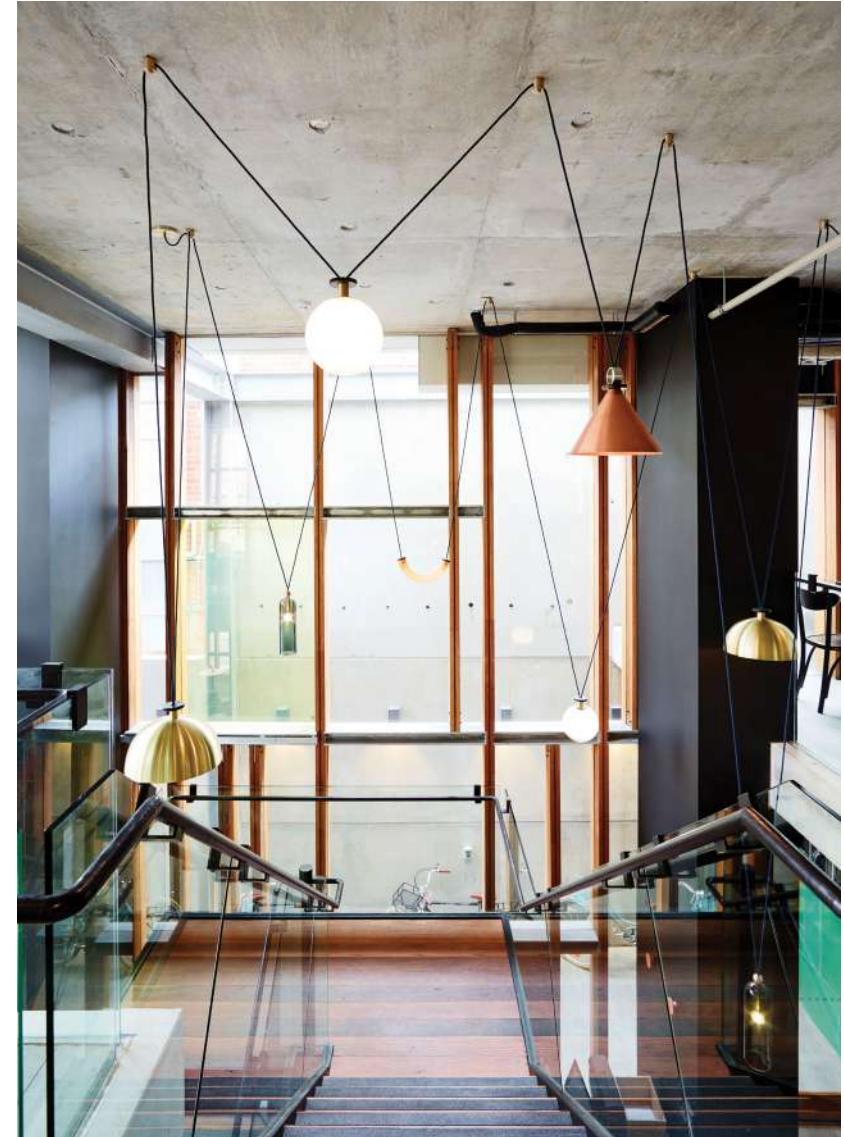
Private Residence — London

LIGHTING & MATERIALS

Pendant — Cone
Blackened Steel

APPROX. MEASUREMENTS

Dimensions Variable



Alex Hotel — Perth

LIGHTING & MATERIALS

Custom Configuration

APPROX. MEASUREMENTS

Dimensions Variable



LIGHTING & MATERIALS
Pendant — Cylinder
Midnight

APPROX. MEASUREMENTS
Dimensions Variable



LIGHTING & MATERIALS
Pendant — Globe
Gray Fog

APPROX. MEASUREMENTS
Detail



LIGHTING & MATERIALS
Double Pendant
Brushed Copper

APPROX. MEASUREMENTS
Dimensions Variable



LIGHTING & MATERIALS
3-Piece Chandelier
Blackened Steel

APPROX. MEASUREMENTS
Dimensions Variable



Private Residence — Cassis

LIGHTING & MATERIALS
5-Piece Chandelier
Brushed Copper / Brushed Brass

APPROX. MEASUREMENTS
Dimensions Variable



LIGHTING & MATERIALS
Pendant — Globe
Gray Fog

APPROX. MEASUREMENTS
Dimensions Variable



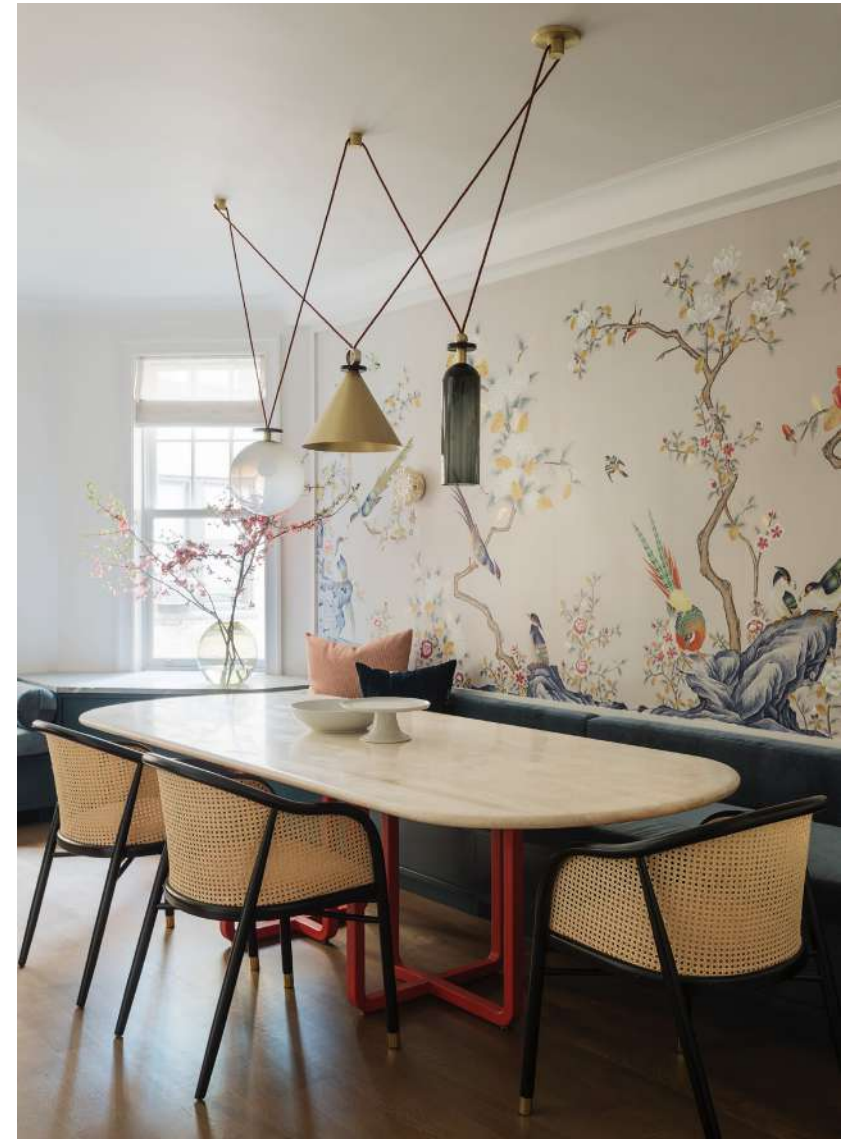
Private Residence — New York

LIGHTING & MATERIALS

Custom Double Pendant
Blackened Steel

APPROX. MEASUREMENTS

Dimensions Variable



Private Residence — New York

LIGHTING & MATERIALS

3-Piece Chandelier
Brushed Brass

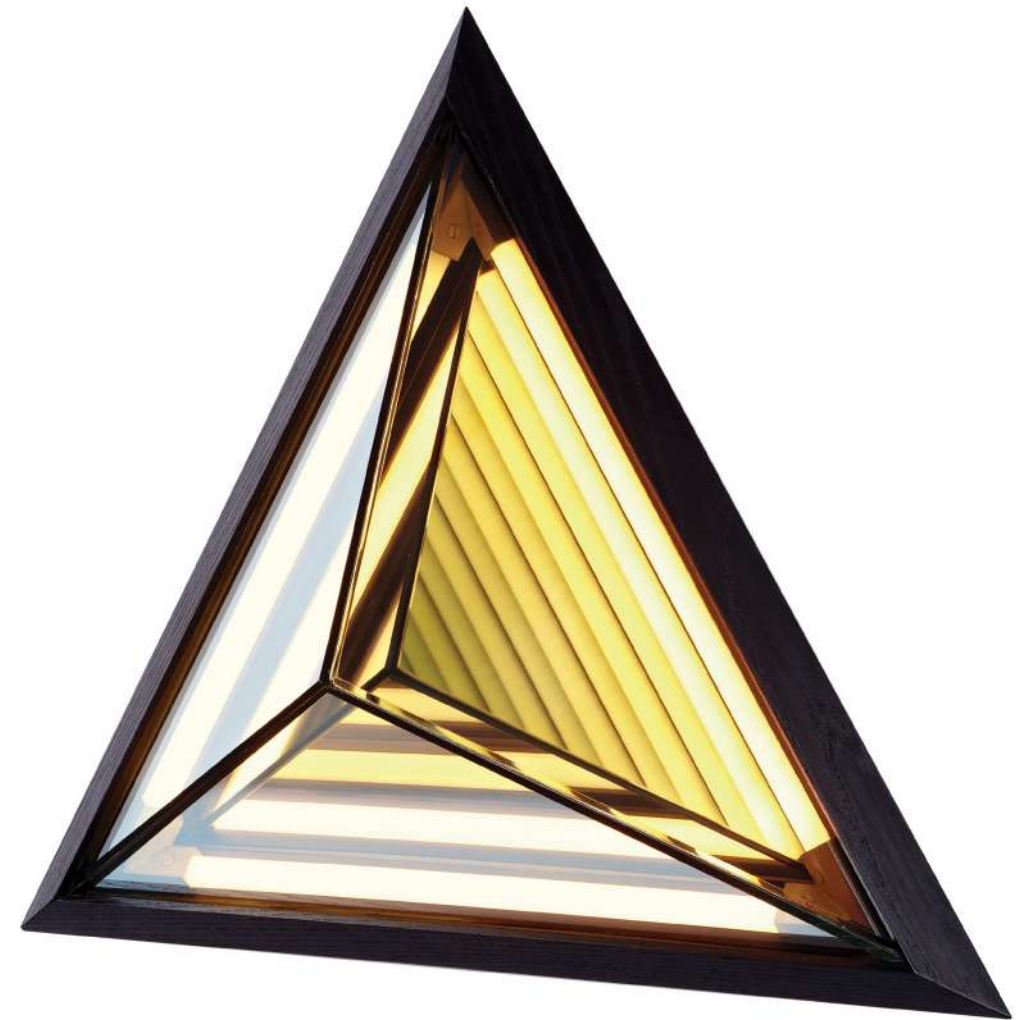
APPROX. MEASUREMENTS

Dimensions Variable

Stella

by Rosie Li

Inspired by his early work, this sconce is named after the painter Frank Stella. When illuminated, its half-mirrored glass diffuser reveals a series of nested geometric shapes. Stella creates the impression of infinite volume within a finite space.



LIGHTING & MATERIALS

Triangle

APPROX. MEASUREMENTS

H 19.5 in × W 17 in × D 6.5 in

H 50 cm × W 43 cm × D 17 cm

Finish – Wood

● Black

Lamping 120V & 240V

Integrated LED

Details

Materials

Mirrored Glass,
Brass, Steel, Wood

Dimmer Compatibility

Triac, Electronic Low Voltage (ELV) or 0-10V

Year

2012

Designer

Rosie Li is a Chinese-born American designer focusing on sculptural lighting. Lifelong interests of drawing and sculpture led her to attend Rhode Island School of Design, where Li graduated in 2011 with a BFA in Furniture Design. Shortly after graduating, she launched her design career by partnering with Roll & Hill to produce 'Stella' — a series of Op Art-inspired mirror sconces.

Li's love for lighting design eventually grew into her eponymous lighting atelier, where she blends geometric forms with organic elements. Her works challenge visual perception and blur the lines between product and sculpture. Rosie Li currently lives and works in Brooklyn, NY.





The Maison de Luxe Designer Show House 2015 — Los Angeles

LIGHTING & MATERIALS
Custom Configuration

APPROX. MEASUREMENTS
Custom Configuration



LIGHTING & MATERIALS
Triangle

APPROX. MEASUREMENTS
Detail

Superordinate Antlers

by Jason Miller

The Superordinate Antler Collection, designed in 2003, was influential in breaking the rigidity of contemporary modernism and initiating the back-to-nature movement in design. The natural environment offers such a breadth of beautiful forms, why not bring it indoors? The Antlers are nature, made better.



LIGHTING & MATERIALS

Chandelier — 12 Antlers

White

APPROX. MEASUREMENTS

Dia. 44 in × H 21 in

Dia. 111 cm × H 53 cm

Finishes

○ White

Canopy



A

A. 5-inch / 12.7-cm
round in white

Lamping



A. 120V



B. 240V

Chandeliers

A. 1.5-Watt LED, Frosted, CA8 Flame Tip Shape, E12 Base

B. 1.5-Watt LED, Frosted, CA8 Flame Tip Shape, E14 Base



A. 120V



B. 240V

Table Lamp, Sconce

A. 25-Watt Incandescent, Frosted, T6.5 Tube, E12 Base

A. 18-Watt Edo-halogen, Frosted, E14 Base

Details

Materials

Ceramic

Suspension

96-inch / 244-cm cord and aircraft cable.

Length can be adjusted on site.

Dimmer Compatibility

120V: Triac, Electronic Low Voltage (ELV)

or 0-10V

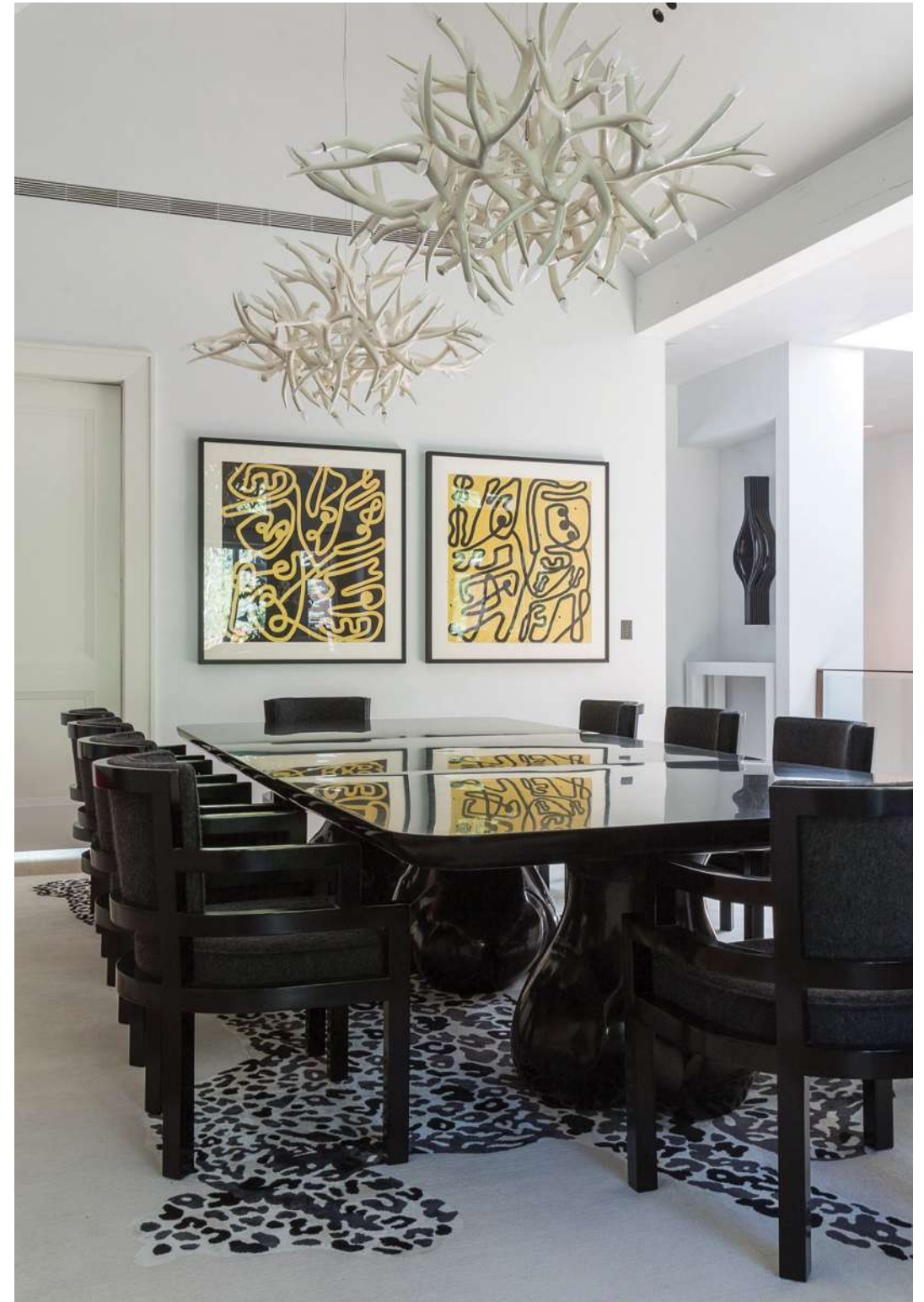
240V: Electronic Low Voltage (ELV) or 0-10V

Year

2003

Designer

Jason Miller is a Brooklyn-based designer and the founder of Roll & Hill. Born in New York and raised in Darien, Connecticut, Jason's suburban upbringing heavily influenced his early, more conceptual pieces — duct-taped chairs and cracked vases, among them — and continues to inform the elegant, historically rich work that has become his signature. Jason received an MFA in painting and spent time in both the art and advertising worlds, but soon realized he preferred making things to documenting them. His designs — like a mirror whose photographic surface recalls a painted landscape — still often reflect those early preoccupations, but each is a functional object, with a kind of beauty and wit. Today, Jason runs both Jason Miller Studio and Roll & Hill from his headquarters in Sunset Park, Brooklyn.





LIGHTING & MATERIALS

Sconce
Custom Finish

APPROX. MEASUREMENTS

H 20 in x W 17 in x D 10 in
H 51 cm x W 44 cm x D 26 cm



LIGHTING & MATERIALS

Chandelier — 4 Antlers
White

APPROX. MEASUREMENTS

Dia. 21 in x H 30 in
Dia. 53 cm x H 76 cm



LIGHTING & MATERIALS

Chandelier — 24 Antlers
Custom Finish

APPROX. MEASUREMENTS

Dia. 51.5 in x H 35 in
Dia. 131 cm x H 89 cm



LIGHTING & MATERIALS

Chandelier — 27 Antler Ring
White

APPROX. MEASUREMENTS

Dia. 54 in x H 11 in
Dia. 137 cm x H 27 cm



Private Residence — Seattle

LIGHTING & MATERIALS

Chandelier — 10 Antlers
White

APPROX. MEASUREMENTS

D 34.5 in x H 18 in
D 87 cm x H 46 cm



Private Residence — San Francisco

LIGHTING & MATERIALS

Chandelier — 6 Antlers
White

APPROX. MEASUREMENTS

D 34 in x H 15 in
D 87 cm x H 39 cm

The Laddi

by Jenna Lyons

A star-shaped, unlacquered brass base anchors a white oak stem and Italian glass shade. Composed of three unique elements perfectly mixed to create a graceful table lamp embracing the old and the new, stars and mushrooms.



LIGHTING & MATERIALS

Table Lamp

White Oak

APPROX. MEASUREMENTS

D 11.62in x W 11.62in x H 14.18in

D 29.52cm x W 29.52cm x H 36cm

Finishes

● White Oak

Features

The brass accents are unlacquered; with use they will darken and patina over time. Polishing will restore the sheen if desired. Cased smoke glass shade appears dark gray when off and amber when the lamp is lit.

Lamping 120V & 240V

Integrated LED

Details

Materials

White Oak, Polished
Unlacquered Brass,
Cased Smoke Glass

Dimmer Compatibility

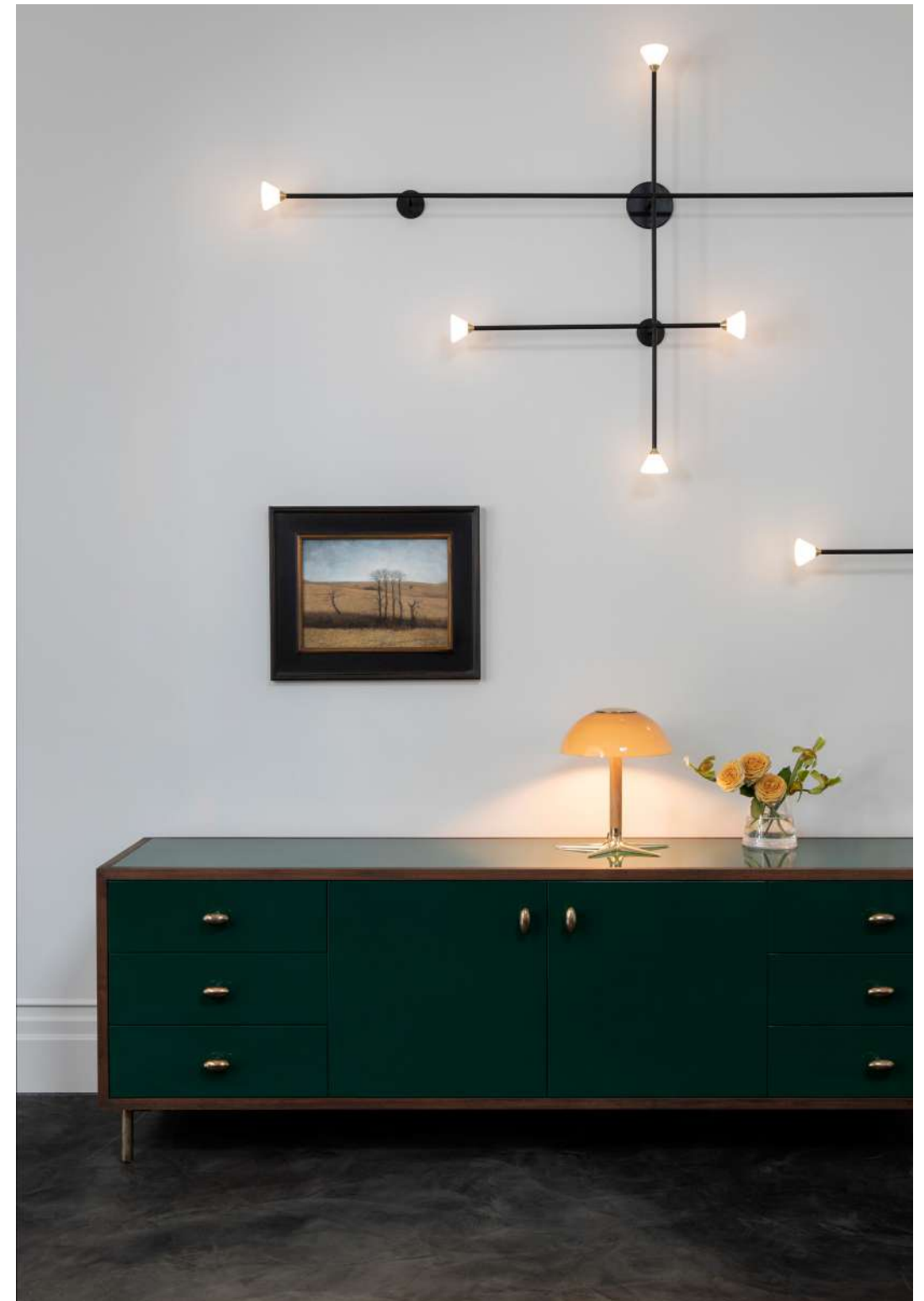
Integrated dimmer on cord

Year

2021

Designer

While president and executive creative director of J.Crew Group, Jenna Lyons was widely recognized as the creative force behind the American retail chain's phenomenal rise from floundering catalogue chain to one of the most coveted fashion brands in the US. Jenna is now Co-Founder and CEO of direct-to-consumer beauty brand, LoveSeen, as well as title role and Executive Producer of *STYLISH* with Jenna Lyons on HBO Max. Jenna currently resides in New York City with her son Beckett.





Roll & Hill – New York

LIGHTING & MATERIALS

Table Lamp
White Oak

APPROX. MEASUREMENTS

D 11.62in x W 11.62in x H 14.18in
D 29.52cm x W 29.52cm x H 36cm



Private Residence – New York

LIGHTING & MATERIALS

Table Lamp
White Oak

APPROX. MEASUREMENTS

D 11.62in x W 11.62in x H 14.18in
D 29.52cm x W 29.52cm x H 36cm

Stockists

United States

Nationwide	Denver	Tulsa
Design Within Reach Tel +1 800 944 2233 www.dwr.com	Studio Como 2590 Walnut Street Tel +1 303 296 1495 www.studiocomo.com	SR Hughes 3410 S. Peoria, Suite 100 Tel +1 918 742 5515 www.srhughes.com
Lumens Tel +1 877 445 4486 www.lumens.com	Gallatin Gateway	Utah
New York	Earth Elements 12 Penny Lane Tel +1 406 414 7040 www.earthelements.com	Earth Elements 205 Junes Way Tel +1 406 730 3133 www.earthelements.com
DDC 136 Madison Avenue Tel +1 212 685 0800 www.ddnyc.com	Houston	Washington, DC
Designlush 200 Lexington Avenue Tel +1 212 532 5450 www.designlush.com	Poliform Houston 2800 Kirby Drive, Suite A-210 Tel +1 713 630 6500 www.poliformusa.com	Illuminations Inc. 308 Florida Avenue NW Tel +1 202 783 4888 www.illuminc.com
The Future Perfect 55 Great Jones Street Tel +1 212 473 2500 www.thefutureperfect.com	Jackson Hole	Australia
Matter 405 Broome Street Tel +1 212 343 2600 www.mattermatters.com	Earth Elements 810 West Broadway Tel +1 307 264 1720 www.earthelements.com	Brisbane
Poliform New York 150 East 58th Street Tel +1 212 421 1800 www.poliformusa.com	Los Angeles	Space Furniture 10 James St., Fortitude Valley Tel +61 7 3253 6000 www.spacefurniture.com.au
Atlanta	The Future Perfect Casa Perfect, by appointment Tel +1 323 202 2025 www.thefutureperfect.com	Melbourne
Illuminations Lighting 425 Peachtree Hills Ave NE #3 Tel +1 404 876 1064 www.illumco.com	Poliform Los Angeles 8818 Beverly Blvd Tel +1 310 271 7836 www.poliformusa.com	Space Furniture 629 Church Street, Richmond Tel +61 3 9426 3000 www.spacefurniture.com.au
Austin	Twentieth 8057 Beverly Blvd Tel +1 323 904 1200 www.twentieth.net	Sydney
Scott+Cooner 2120 E 7th Street Tel +1 512 480 0436 www.scottcooner.com	Miami	Space Furniture 84 O'Riordan Street, Alex- andria Tel +61 2 8339 7588 www.spacefurniture.com.au
Cincinnati	Poliform Miami 4100 NE 2nd Ave #101 Tel +1 305 573 9950 www.poliformusa.com	Austria
Design Lab 1401 Elm Street Tel +1 513 620 7299 www.design-lab.com	San Francisco	Fügen
Dallas	The Future Perfect 3085 Sacramento Street Tel +1 415 932 6508 www.thefutureperfect.com	Wetscher GmbH Zillertalstraße 30 Tel +43 (0) 5288 600 - 0 www.wetscher.com
Scott + Cooner 1617 Hi Line Drive, Suite 100 Tel +1 214 748 9838 www.scottcooner.com	Seattle	Belgium
	Inform Interiors 1526 Bellevue Avenue Tel +1 206 622 1608 www.informseattle.com	Ghent
		Obumex Kortrijksesteenweg 1123 Tel +32 51 70 50 71 www.obumex.be

Canada

Calgary
Lightform 1005 9th Avenue Southeast Tel +1 403 508 9980 www.lightform.ca
Edmonton
Lightform 10545 124 Street Tel +1 780 413 9898 www.lightform.ca
Toronto
Hollace Cluny 160 Pears Avenue #203 Tel +1 416 968 7894 www.hollacecluny.ca

Lightform 267 Niagara Street Tel +1 416 745 5656 www.lightform.ca
Vancouver
Inform Vancouver 50 Water Street Tel +1 604 682 3868 www.informinteriors.com
Lightform 425 Carrall Street, #2 Tel +1 604 688 7022 www.lightform.ca

China

Beijing
Domus Tiandi Jinbao Street, Dongcheng Tel +86 10 8511 6228 www.domustiandi.com

Shanghai
Design Republic Multiple locations Tel +86 21 6082 3883 www.thedesignrepublic.com

Finland

Helsinki
Blomer Neitsytpolku 5 Tel +358 9 6818220 www.blomer.fi

France

Paris
Le Bon Marché 24 Rue de Sèvres Tel +33 1 44 39 80 00 www.lebonmarche.com
Silvera Multiple locations Tel +33 1 55 35 14 35 www.silvera.fr
Triode 28 Rue Jacob Tel +33 1 43 29 40 0528 www.triodedesign.com

Germany

Aachen
Mathes Büchel 29-31 Tel +49 (0) 241 - 470301 0 www.mathes.de
Berlin
Dopo Domani Kantstraße 148 Tel +49 30 688132970 www.knallgraugmbh.de

Berlin
RUBY designliving GmbH & Co. KG Julie-Wolfthorn-Str. 1 Tel +49-30-639 68 73 - 30 www.ruby-designliving.de

Hamburg
CLIC Inneneinrichtung GmbH Stilwerk, Große Elbstraße 68 Tel +49 40 4 689 689 www.clic.de

Hannover
Steinhoff Braunschweiger Platz 2 Tel +49 0511 280 76 0 www.steinhoff- einrichtungen.de

Munich
Böhmeler Einrichtungshaus GmbH Tal 11 Tel +49 (0) 89 2136 0 www.boehmler.de

Wiesloch
Weckesser Wohnen In the Weinäckern 11 Tel +49 6222 92300 www.weckesser.de

Hong Kong

La Deux 15 Chong Yip Street Tel +852 2955 7121 www.ladeux.com.hk
Lane Crawford Home Level One, Pacific Place 88 Queensway, Admiralty Tel +852 2118 3668 www.lanecrawford.com

Hungary

Budapest
Code Showroom Nagymező street 9 Tel + 36 1 267 0312 www.codeshowroom.com

India

Mumbai
Sources Unlimited B402, Dhruv, Gulmohar Road, J.V.PD. Scheme, Vile Parle (W) Tel +91 22 2620 1700 www.sourcesunlimited.co.in

Italy

Milan
Spotti Viale Piave, 27 Tel +39 02 781953 www.spotti.com

Latvia

Riga
Krassky Duntes Iela 11 Tel +371 67 781 400 www.krasskylv

Mexico

Mexico City
Diez Company Av. Paseo de las Palmas 520 Lomas Tel +52 55 20 35 08 www.diezcompany.mx

Netherlands

Amsterdam
Co van der Horst Binderij 2 Tel +31 020 641 2505 www.covanderhorst.nl
Edha Interieur Willemsparkweg 5-9 Tel +31 20 673 2401 www.edha-interieur.nl

New Zealand

Auckland
ECC 39 Nugent Street, Grafton Tel +64 9 379 9680 www.ecc.co.nz
Wellington
ECC 61 Thorndon Quay Tel +64 4 473 3456 www.ecc.co.nz

Norway

Oslo
Expo Nova Drammensveien 134 Tel +47 23 13 13 40 www.expo-nova.no

Phillipines

Makati
Poliform / Varena 219 Nicanor Garcia St Tel +63 2 804 2776 www.poliform.it

Russia

Moscow
Hall Oscar — Poliform Artplay, Nizhnyaya Syromyatnicheskaya Ulica, 10 Tel +7 495 640-75-40 www.halloscar.ru
Krassky Tel +7 495 181-53-00 www.krassky.ru

Singapore

Space Singapore 77 Bencoolen Street Tel +65 6415 0000 www.spacefurniture.com.sg
--

Madrid
Naharro Calle Granada 57 Tel +34 915 01 47 49 www.naharro.com

Palma
Aquaquae Carrer de Lluçmajor 38 Tel +34 971 42 06 00 www.aquaquae.com

Sweden

Stockholm
Nordiska Galleriet Nybrogatan 11 Tel +46 08 442 83 60 www.nordiskagalleriet.se

Switzerland

Zürich
Roomdresser GmbH Zeltweg 4 Tel +41 43 317 11 44

Taiwan

Taipei
Bhome Boutique Multiple locations Tel +886 2 2395 5055 www.bhome.com.tw

Ukraine

Kyiv
Shadows and Shades 6/1 John Paul II Str. Tel +00 380 50 310 65 84

United Kingdom

London
SCP 135-139 Curtain Road, Shoreditch Tel +44 20 7739 1869 www.scp.co.uk

Credits

P. 15 Joseph De Leo / Designer: Stephanie Waltbillig
 P. 18 Sean Litchfield / Designer: Justin Charette
 P. 19 Joseph De Leo / Designer: D'Apostrophe
 P. 21, 298 Laurie Black / Designer: Hoedemaker Pfeiffer Architecture + Amy Baker
 P. 24 Vivian Johnson / Designer: Anja Michals
 P. 25 Image courtesy The Up Studio / Designer: The Up Studio
 P. 29, 32, 145, 235, 236, 251, 254, 257 Nicole Franzen
 P. 34, 45, 112, 128, 143, 153, 159, 201, 208, 255 Joseph De Leo
 P. 43 Pia Riverola
 P. 44 Adrian Gaut / Designer: Commune
 P. 49, 54 Adrian Gaut / Designer: Post Company, Tavvo Somer
 P. 60, 183 Joseph De Leo / Designer: GRT Architects
 P. 61 Robert Rios / Designer: MONIOMI Design
 P. 64 Amanda Kirkpatrick / Designer: StudioLAB
 P. 65 Laure Joliet / Designer: Scout Regalia
 P. 77, 197 Max Burkhalter / Designer: MKCA
 P. 79 Evan Joseph / Designer: Jeffrey Beers
 P. 83 Ruth Maria Murphy / Designer: Kingston Lafferty Design
 P. 87 Gieves Anderson / Designer: Fredrick Tang Architecture
 P. 95, 176 Madeline Tolle / Designer: Rapt Studio
 P. 98, 175 Ewout Huibers / Designer: BigBrands and Studio Linse
 P. 103, 105, 227, 261, 264 Fyodor Shiryayev
 P. 117 Briana Marie / Designer: House of Honey
 P. 118 Arturo Zavala Haag / Courtesy Triode
 P. 120 Image courtesy Jeffco Development / Designer: Jeffco Development
 P. 121 Daniele Albright
 P. 123 Sam Angel / Designer: Deborah Berke
 P. 127 Evan Joseph / Designer: NV/da
 P. 135 Image courtesy Domino Creative / Designer: Domino Creative
 P. 137 Marili Forastieri / Designer: Daun Curry
 P. 138 Elizabeth Felicella
 P. 144 Michael Persico
 P. 149 Adam Macchia / Designer: Baxt Ingui Studio and Tamara Eaton
 P. 160 Alexander James / Designer: Catherine Weinstock
 P. 161 Gaia Danieli / Courtesy Poliform

P. 170, 217
 P. 178
 P. 187
 P. 188
 P. 191
 P. 193
 P. 198
 P. 205
 P. 213
 P. 214
 P. 215
 P. 216
 P. 221
 P. 222
 P. 243
 P. 244
 P. 245
 P. 269
 P. 270
 P. 272
 P. 278
 P. 279
 P. 282
 P. 284
 P. 285
 P. 290
 P. 295
 P. 299
 P. 303, 304
 P. 305

Nicole Franzen / Courtesy De La Espada
 Adrian Tiemens / Designer: Adam Hunter
 Jane Beiles / Designer: Diana Byrnes
 Lauren Coleman / Designer: Cailin Wunder Design
 Joshua McHugh / Designer: Timothy Brown
 Lauren Coleman / Designer: Dumais ID
 Nicole Franzen / Designer: HOMEWORK
 Matthew Millman / Designer: CLB Architects
 Stephan Julliard
 Jeffrey Schad
 Fran Parente / Designer: Fabio Morozini
 Jonny Valiant / Designer: Jeff Lincoln
 Sean Litchfield / Designer: Kelly Rosen
 Andreas Rentz
 Chad Falkenberg / Designer: Falken Reynolds
 Adam Friedberg / Designer: Laura Krey Design
 Alexis Toureau
 Matthew Millman / Designer: CLB Architects
 Alexis Toureau / Designer: Courtesy Triode
 Kris Tamburello / Designer: RS3 Design
 Image courtesy Plain English Design / Designer: Plain English Design
 Anson Smart / Designer: Arent & Pyke
 Hervé Hôte / Designer: David Price
 Joshua McHugh / Designer: Frampton Co.
 Matthew Williams / Designer: Studio DB
 Michael Wells / Designer: Sara Story Design
 Oliver Clarke / Designer: Samantha Todhunter Design
 Aubrie Pick / Designer: Lauren Nelson Design
 Sarah Elliott
 Sean Pressley / Designer: Jenna Lyons

Product Photography
 Outdoor Photography

Joseph De Leo
 Jeffrey Schad

About

Roll & Hill is a design-minded American furniture and lighting company. We collaborate with some of the most exciting independent designers working today to create exceptional lighting and furnishings. Roll & Hill was founded in 2010 by designer Jason Miller whose primary mission was to make well-designed, contemporary lighting for the American market. His experience as a designer and maker inspired him to create a company that would harness the talents of independent designers while offering the benefits more often associated with larger companies.

Roll & Hill is committed to on-demand production, which allows us to customize our collections to our client's needs. At our production facilities in Grand Rapids, Michigan, we make our furniture and lighting by hand, one piece at a time.

Roll & Hill's designs draw from a rich material palette, including brass, bronze, leather, wood, hand-knotted rope, and mouth-blown glass. Roll & Hill's designers often pair historical elements with contemporary forms to create objects that feel familiar yet totally new.

ROLLANDHILL.COM

GENERAL INQUIRIES

87 34th Street, Unit 11, Brooklyn, NY 11232

T +1 (718) 387 6132

Info@rollandhill.com

SALES INQUIRIES

3 Mercer St, New York, NY 10013

T +1 (718) 387 6132

Sales@rollandhill.com





