

Roll & Hill  
FURNITURE

# Table of Contents

	P. 4	Post Company
	P. 12	Post Company
	P. 18	Campagna
	P. 26	Post Company
	P. 34	Jason Miller
	P. 42	Jason Miller
Orbit	P. 50	Jamie Gray
	P. 58	Campagna
	P. 66	Karl Zahn
	P. 76	Jenna Lyons
	P. 86	Jenna Lyons
	P. 92	Jenna Lyons
	P. 98	Jenna Lyons
	P. 106	Jenna Lyons
	P. 112	Campagna
	P. 122	
	P. 123	

# Chamber

by Post Company

The Chamber side table is one of a series of pieces originally designed by Post Company for Inness, a Hudson Valley country resort by tastemaker Taavo Somer that takes all of its cues from the surrounding landscape. Stable and understated, Chamber is grounded in the foundational concepts of simplicity, utility, and clarity of construction.



## FURNITURE & MATERIALS

Side Table

Black Walnut

## APPROX. MEASUREMENTS

L 17 in x W 36 in x H 15 in

L 43.2 cm x W 91.4 cm x H 38 cm

## Wood Species

- Hard Maple
- White Oak
- Black Walnut

## Details

### Materials

American Hardwood

### Finish

Natural Oil

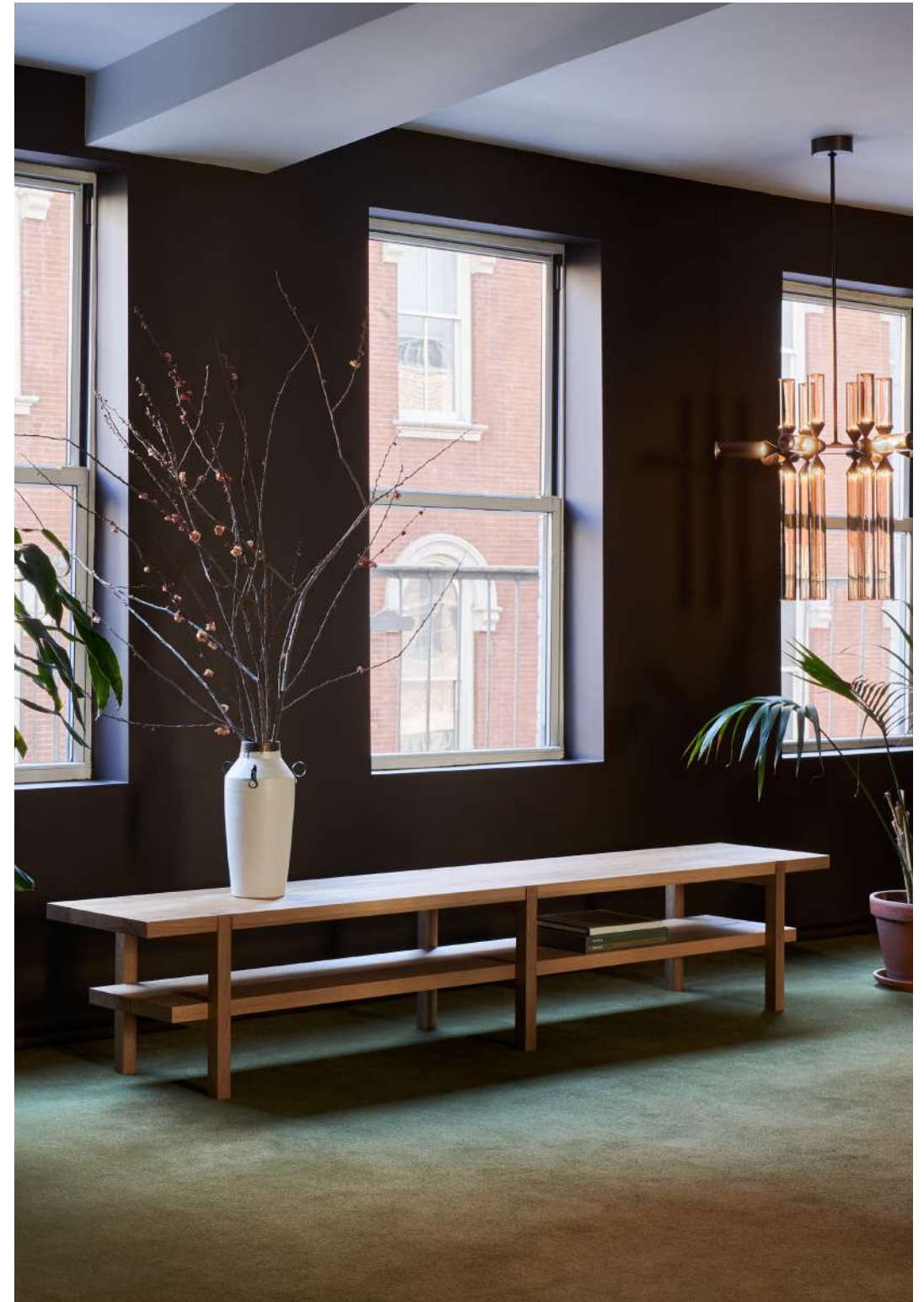
## Year

2021

## Designer

Post Company is a design studio operating across hospitality, retail and residential programs. The company creates environments that are grounded in rich narration and guided by collaborative research, contextual appreciation, and informed perspective. They believe that considered design creates space for discourse, human connection, and cultural growth.

Founded by Ruben Caldwell, Jou-Yie Chou, and Leigh Salem, the team is a collection of architects, interior designers, carpenters, art directors, and creatives working across disciplines. Their work is a composite of many voices both within and outside of the studio – Post Company believes that this collective expression is greater than that of the individual and that great design should be universally applicable and broadly accessible. As such, Post Company is always pushing to expand the reach of design beyond concepts of luxury and exclusivity.





FURNITURE & MATERIALS

Bench  
Hard Maple

APPROX. MEASUREMENTS

Detail



FURNITURE & MATERIALS

Bench  
White Oak

APPROX. MEASUREMENTS

D 17.5in x W 60in x H 17.25in  
D 44.5cm x W 152.4cm x H 43.8cm



FURNITURE & MATERIALS

Side Table  
Black Walnut

APPROX. MEASUREMENTS

Detail



FURNITURE & MATERIALS

Side Table  
White Oak

APPROX. MEASUREMENTS

L 17 in x W 36 in x H 15 in  
L 43.2 cm x W 91.4 cm x H 38 cm



Roll & Hill — New York

FURNITURE & MATERIALS

Side Table  
Black Walnut

APPROX. MEASUREMENTS

Detail



FURNITURE & MATERIALS

Bench  
White Maple

APPROX. MEASUREMENTS

D 17.5in x W 48in x H 17.25in  
D 44.5cm x W 121.9cm x H 43.8cm

# Chapter

by Post Company

The Chapter table is one of a series of pieces originally designed by Post Company for Inness, a Hudson Valley country resort by tastemaker Taavo Somer that takes all of its cues from the surrounding landscape. Intentionally heavy visually and physically with joinery that is pronounced but not fussy or ornate, Chapter was designed to provide for gathering and connection.



## FURNITURE & MATERIALS

Table

Black Walnut

## APPROX. MEASUREMENTS

L 60 in x W 60 in x H 29 in

L 152.4 cm x W 152.4 cm x H 73.7 cm



## Wood Species

- Hard Maple
- Black Walnut

## Features

Available in two standard diameters —  
50" and 60"

## Details

### Materials

American Hardwood

### Finish

Natural Oil

## Year

2021

## Designer

Post Company is a design studio operating across hospitality, retail and residential programs. The company creates environments that are grounded in rich narration and guided by collaborative research, contextual appreciation, and informed perspective. They believe that considered design creates space for discourse, human connection, and cultural growth.

Founded by Ruben Caldwell, Jou-Yie Chou, and Leigh Salem, the team is a collection of architects, interior designers, carpenters, art directors, and creatives working across disciplines. Their work is a composite of many voices both within and outside of the studio — Post Company believes that this collective expression is greater than that of the individual and that great design should be universally applicable and broadly accessible. As such, Post Company is always pushing to expand the reach of design beyond concepts of luxury and exclusivity.







FURNITURE & MATERIALS

Table  
Hard Maple

APPROX. MEASUREMENTS

Detail



FURNITURE & MATERIALS

Table  
Black Walnut

APPROX. MEASUREMENTS

L 50 in x W 50 in x H 29 in  
L 127 cm x W 127 cm x H 73.7 cm

FURNITURE & MATERIALS

Table  
Black Walnut

APPROX. MEASUREMENTS

Detail

# Cross Bar

by Campagna

Refined and minimal, this round dining table has thickened, turned legs with a subtle, organic profile. The edge detail on the top is molded to the shape of the human hand and soft to the touch. Complex, yet elegant wooden joinery gives this table a sense of craft and lightness. Campagna worked closely with Bowen Liu Studio in refining the joinery for Cross Bar Table. The final form owes much to the collaboration.



## FURNITURE & MATERIALS

Table

Hard Maple

## APPROX. MEASUREMENTS

L 28in x W 48in x W 48in

L 71cm x W 122cm x W 73.5cm

## Wood Species

- Hard Maple
- Black Walnut

## Details

### Materials

American Hardwood

### Finish

Natural Oil

## Year

2020

## Designer

Campagna is the studio of furniture maker and designer Cody Campanie. Born in 1986 in rural New York State, Cody studied architecture at Brown University and cabinet making at Seattle's Wood Technology Center. He aims to make well crafted objects and spaces that question the norms of embodied rituals and recall that built form stores cultural memory.





FURNITURE & MATERIALS

Table  
Black Walnut

APPROX. MEASUREMENTS

L 48 in x W 48 in x H 29 in  
L 122 cm x W 122 cm x H 73.7 cm



FURNITURE & MATERIALS

Table  
Black Walnut

APPROX. MEASUREMENTS

Detail





Roll & Hill — New York

FURNITURE & MATERIALS

Table  
Black Walnut

APPROX. MEASUREMENTS

L 48 in x W 48 in x H 29 in  
L 122 cm x W 122 cm x H 73.7 cm



FURNITURE & MATERIALS

Table  
Hard Maple

APPROX. MEASUREMENTS

Detail

# Grange

by Post Company

The Grange bench is one of a series of pieces originally designed by Post Company for Inness, a Hudson Valley country resort by tastemaker Taavo Somer that takes all of its cues from the surrounding landscape. The orthogonal passing planes and oversized members of Grange are an ode to a simple method of building, humble and grounded.



## FURNITURE & MATERIALS

Bench

Black Walnut

## APPROX. MEASUREMENTS

L 17.5 in x W 60 in x H 17.25 in

L 44.5 cm x W 152.4 cm x H 43.8 cm



## Wood Species

- Hard Maple
- White Oak
- Black Walnut

## Features

Available in two standard widths —  
48" and 60"

## Details

### Materials

American Hardwood

### Finish

Natural Finish

## Year

2021

## Designer

Post Company is a design studio operating across hospitality, retail and residential programs. The company creates environments that are grounded in rich narration and guided by collaborative research, contextual appreciation, and informed perspective. They believe that considered design creates space for discourse, human connection, and cultural growth.

Founded by Ruben Caldwell, Jou-Yie Chou, and Leigh Salem, the team is a collection of architects, interior designers, carpenters, art directors, and creatives working across disciplines. Their work is a composite of many voices both within and outside of the studio — Post Company believes that this collective expression is greater than that of the individual and that great design should be universally applicable and broadly accessible. As such, Post Company is always pushing to expand the reach of design beyond concepts of luxury and exclusivity.





FURNITURE & MATERIALS

Bench  
Hard Maple

APPROX. MEASUREMENTS

Detail



FURNITURE & MATERIALS

Bench  
White Oak

APPROX. MEASUREMENTS

L 17.5 in x W 48 in x H 17.25 in  
L 44.5 cm x W 121.9 cm x H 43.8 cm



FURNITURE & MATERIALS

Bench  
White Oak

APPROX. MEASUREMENTS

L 17.5 in x W 48 in x H 17.25 in  
L 44.5 cm x W 121.9 cm x H 43.8 cm



FURNITURE & MATERIALS

Bench  
Black Walnut

APPROX. MEASUREMENTS

Detail

# Lafayette

by Jason Miller

A reference to steamer trunks and campaign furniture, the Lafayette cabinets carry on in the same tradition of encapsulating personal items for safe-keeping.

## FURNITURE & MATERIALS

Dresser

Black Walnut

## APPROX. MEASUREMENTS

L 26 in x W 36 in x H 49.625 in

L 66 cm x W 91.4 cm x H 126.1 cm





## Wood Species

- Hard Maple
- White Oak
- Black Walnut

## Features

Maple drawer boxes are detailed with dovetail joinery and a soft-close mechanism.

## Details

### Materials

American Hardwood, Unlacquered Brass

### Finish

Natural Oil

## Year

2021

## Designer

Jason Miller is a Brooklyn-based designer and the founder of Roll & Hill. Born in New York and raised in Darien, Connecticut, Jason's suburban upbringing heavily influenced his early, more conceptual pieces — duct-taped chairs and cracked vases, among them — and continues to inform the elegant, historically rich work that has become his signature. Jason received an MFA in painting and spent time in both the art and advertising worlds, but soon realized he preferred making things to documenting them. His designs — like a mirror whose photographic surface recalls a painted landscape — still often reflect those early preoccupations, but each is a functional object, with a kind of beauty and wit. Today, Jason runs both Jason Miller Studio and Roll & Hill from his headquarters in Sunset Park, Brooklyn.





FURNITURE & MATERIALS

Bedside Table  
Black Walnut

APPROX. MEASUREMENTS

Detail



FURNITURE & MATERIALS

Bedside Table  
Black Walnut

APPROX. MEASUREMENTS

L 17.25 in x W 26 in x H 25.25 in  
L 43.8 cm x W 66 cm x H 64.1 cm



FURNITURE & MATERIALS

Dresser  
Black Walnut

APPROX. MEASUREMENTS

Detail



FURNITURE & MATERIALS

Dresser  
Black Walnut

APPROX. MEASUREMENTS

Detail





Roll & Hill — New York

FURNITURE & MATERIALS

Dresser  
Black Walnut

APPROX. MEASUREMENTS

L 26 in × W 36 in × H 49.625 in  
L 66 cm × W 91.4 cm × H 126.1 cm



FURNITURE & MATERIALS

Credenza  
Black Walnut

APPROX. MEASUREMENTS

D 20in x W 72in x H 27in  
D 50.8cm x W 182.8cm x H 68.5cm

# Lexington

by Jason Miller

The Lexington series stems from Jason Miller's interest in American furniture combined with his fascination of Gothic architecture. Inspired by the surprisingly rational structure underlying Gothic buildings when stripped of their ornamental facades, Miller applied that framework to a series of furniture with a distinctly American feel.



## FURNITURE & MATERIALS

Table

Black Walnut

## APPROX. MEASUREMENTS

L 36 in x W 84 in x H 30 in

L 91.4 cm x W 213.4 cm x H 76.2 cm

## Wood Species

- Hard Maple
- Black Walnut

## Details

### Materials

American Hardwood

### Finish

Natural Oil

## Year

2021

## Designer

Jason Miller is a Brooklyn-based designer and the founder of Roll & Hill. Born in New York and raised in Darien, Connecticut, Jason's suburban upbringing heavily influenced his early, more conceptual pieces — duct-taped chairs and cracked vases, among them — and continues to inform the elegant, historically rich work that has become his signature. Jason received an MFA in painting and spent time in both the art and advertising worlds, but soon realized he preferred making things to documenting them. His designs — like a mirror whose photographic surface recalls a painted landscape — still often reflect those early preoccupations, but each is a functional object, with a kind of beauty and wit. Today, Jason runs both Jason Miller Studio and Roll & Hill from his headquarters in Sunset Park, Brooklyn.





FURNITURE & MATERIALS

Table  
Hard Maple

APPROX. MEASUREMENTS

Detail



FURNITURE & MATERIALS

Table  
Hard Maple

APPROX. MEASUREMENTS

Detail



FURNITURE & MATERIALS

Table  
Black Walnut

APPROX. MEASUREMENTS

L 36 in x W 84 in x H 30 in  
L 91.4 cm x W 213.4 cm x H 76.2 cm



FURNITURE & MATERIALS

Table  
Black Walnut

APPROX. MEASUREMENTS

Detail



Private Residence — Michigan

FURNITURE & MATERIALS

Table  
Black Walnut

APPROX. MEASUREMENTS

L 36 in x W 84 in x H 30 in  
L 91.4 cm x W 213.4 cm x H 76.2 cm



FURNITURE & MATERIALS

Table  
Black Walnut

APPROX. MEASUREMENTS

Detail

# Orbit

by Jamie Gray

Orbit is the outcome of Jamie Gray's abiding interest in 20th-century French modernism, a distillation of a period in design interpreted from a contemporary perspective. By refining the ideas of this place and time in history, Gray arrived at the elliptical leg motif that is carried throughout the collection.



## FURNITURE & MATERIALS

Stool

Black Walnut

## APPROX. MEASUREMENTS

D 15in x W 15in x H 17.5in

D 38.1cm x 38.1cm x 44.5cm



## Wood Species

- Hard Maple
- White Oak
- Black Walnut
- Ebonized Oak

## Details

### Materials

American Hardwood

### Finish

Natural Oil

## Year

2022

## Designer

Jamie Gray is a designer, curator, and the founder of New York design gallery Matter. Based in New York since 1998 and born in Los Angeles, California, his work is influenced by both the warm modernism of the west coast and the elegance of the east.

Gray graduated from Pratt Institute in 2001 with a degree in sculpture. His studio practice looks to both form and function as integral and equal parts of a larger narrative in design. He lives in Upstate NY with his wife and three children.





FURNITURE & MATERIALS

Coffee Table  
Hard Maple

APPROX. MEASUREMENTS

Detail



FURNITURE & MATERIALS

Stool

APPROX. MEASUREMENTS

D 15in x W 15in x H 17.5in  
D 38.1cm x W 38.1cm x H 44.5cm



FURNITURE & MATERIALS

Stool, Coffee Table  
Ebonized Oak

APPROX. MEASUREMENTS

Detail



FURNITURE & MATERIALS

Stool  
Hard Maple

APPROX. MEASUREMENTS

Detail

# Sit, Set

by Campagna

Chair is table. Table is chair. Sit, Set Chair is made entirely of solid wood and without the use of mechanical fasteners, applying ancient folk methods in innovative ways. A coopered, ergonomic arc cradles the back and a horizontal plane fitted with a plush leather cushion supports the sitting body.



## FURNITURE & MATERIALS

Chair

Black Walnut / Caramel Leather

## APPROX. MEASUREMENTS

L 19 in x W 45 in x H 29 in

L 48.26 cm x W 114.3 cm x H 73.66 cm



## Wood Species

- Hard Maple
- White Oak
- Black Walnut

## Upholstry

- Caramel
- Black

## Details

### Materials

American Hardwood, Leather

### Finish

Natural Oil

## Year

2020

## Designer

Campagna is the studio of furniture maker and designer Cody Campanie. Born in 1986 in rural New York State, Cody studied architecture at Brown University and cabinet making at Seattle's Wood Technology Center. He aims to make well crafted objects and spaces that question the norms of embodied rituals and recall that built form stores cultural memory.

## Features

COM available upon request.





Roll & Hill — New York

FURNITURE & MATERIALS  
Chair  
White Oak / Caramel Leather

APPROX. MEASUREMENTS  
L 19 in x W 45 in x H 29 in  
L 48.26 cm x W 114.3 cm x H 73.66 cm



Private Residence — Michigan

FURNITURE & MATERIALS  
Chair  
White Oak / Caramel Leather

APPROX. MEASUREMENTS  
L 19 in x W 45 in x H 29 in  
L 48.26 cm x W 114.3 cm x H 73.66 cm





FURNITURE & MATERIALS  
Chair  
Black Walnut / Caramel Leather

APPROX. MEASUREMENTS  
Detail



FURNITURE & MATERIALS  
Chair  
Black Walnut

APPROX. MEASUREMENTS  
L 19 in x W 45 in x H 29 in  
L 48.26 cm x W 114.3 cm x H 73.66 cm



FURNITURE & MATERIALS  
Chair  
White Oak

APPROX. MEASUREMENTS  
Detail



FURNITURE & MATERIALS  
Chair  
Black Walnut / Caramel Leather

APPROX. MEASUREMENTS  
Detail

# Taper

by Karl Zahn

The Taper Stool evokes the pragmatic functionality of a milking stool, using elevated materials and finely honed craftsmanship. The distinct teardrop shaped legs were refined by Karl Zahn working at his lathe and form the basis of a design that is both utilitarian and beautiful.



## FURNITURE & MATERIALS

Bar Stool

Black Walnut

## APPROX. MEASUREMENTS

L 14.5 in × W 19 in × H 30 in

L 36.8 cm × W 48.3 cm × H 76.2 cm

## Wood Species

- Hard Maple
- White Oak
- Black Walnut

## Details

### Materials

American Hardwood, Unlacquered Brass

### Finish

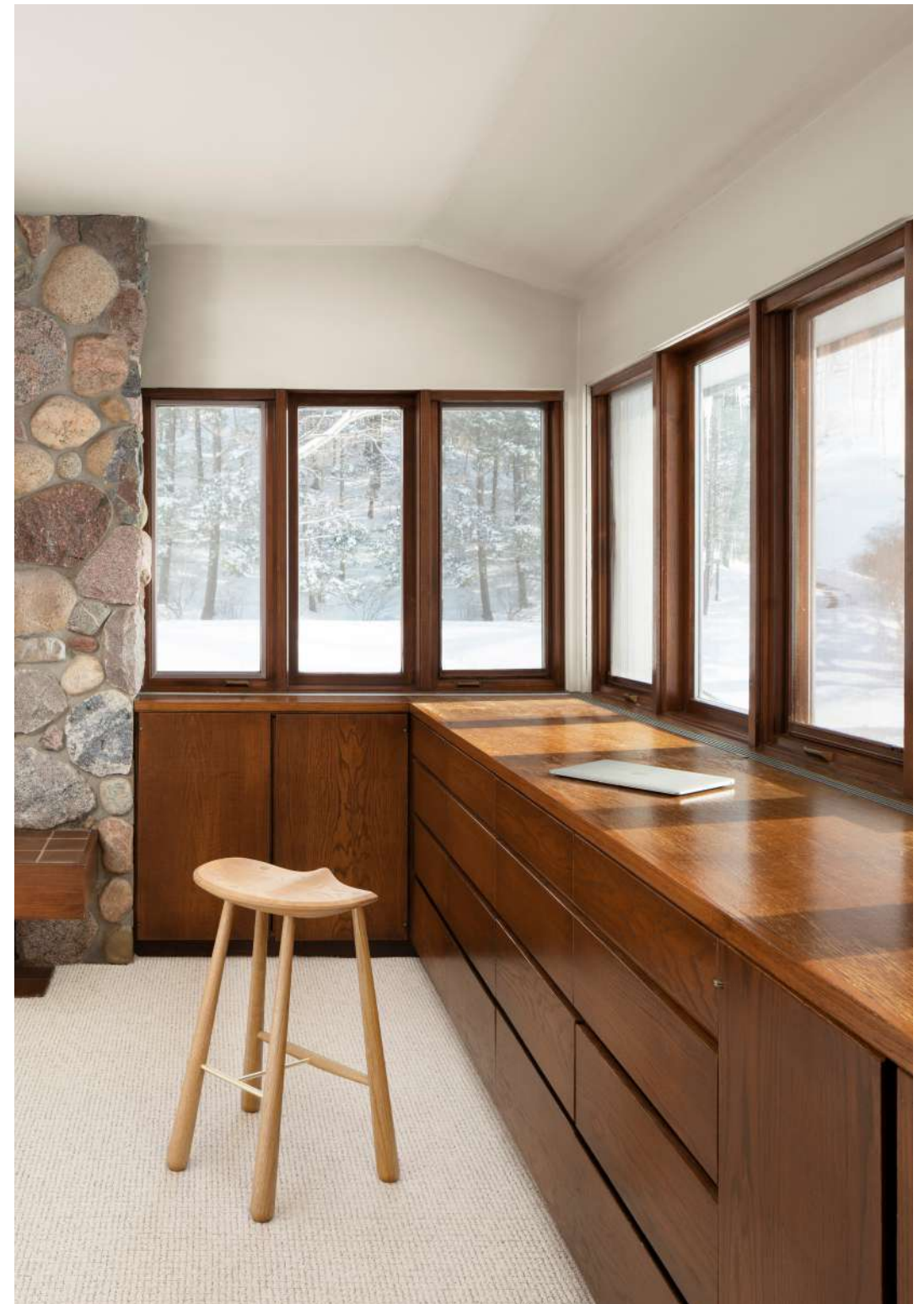
Natural Oil

## Year

2021

## Designer

Born and raised in rural Vermont, Karl Zahn's work with wood and natural materials developed out of his time spent playing in forests and wood shops. His designs express a pared-down simplicity and stark aesthetic that blends modernist hard lines with traditional furniture craft. After earning a degree in product design from the Rhode Island School of Design in 2003, Karl travelled to San Francisco, where he immersed himself in the creative and complicated metalworking culture that thrives there. In 2007, he moved to New York to begin working on his own. He lives in Greenpoint, Brooklyn





Private Residence — Brooklyn

FURNITURE & MATERIALS

Low Stool  
Black Walnut

APPROX. MEASUREMENTS

L 10.25 in x W 13.75 in x H 17 in  
L 26 cm x W 34.9 cm x H 43.2 cm



FURNITURE & MATERIALS

Counter Stool  
Hard Maple

APPROX. MEASUREMENTS

L 14.25 in x W 18 in x H 25 in  
L 36.2 cm x W 45.7 cm x H 63.5 cm





FURNITURE & MATERIALS

Bar Stool  
Black Walnut

APPROX. MEASUREMENTS

Detail



FURNITURE & MATERIALS

Low Stool  
White Oak

APPROX. MEASUREMENTS

Detail



FURNITURE & MATERIALS

Bar Stool  
Hard Maple

APPROX. MEASUREMENTS

Detail



FURNITURE & MATERIALS

Counter Stool  
Black Walnut

APPROX. MEASUREMENTS

Detail





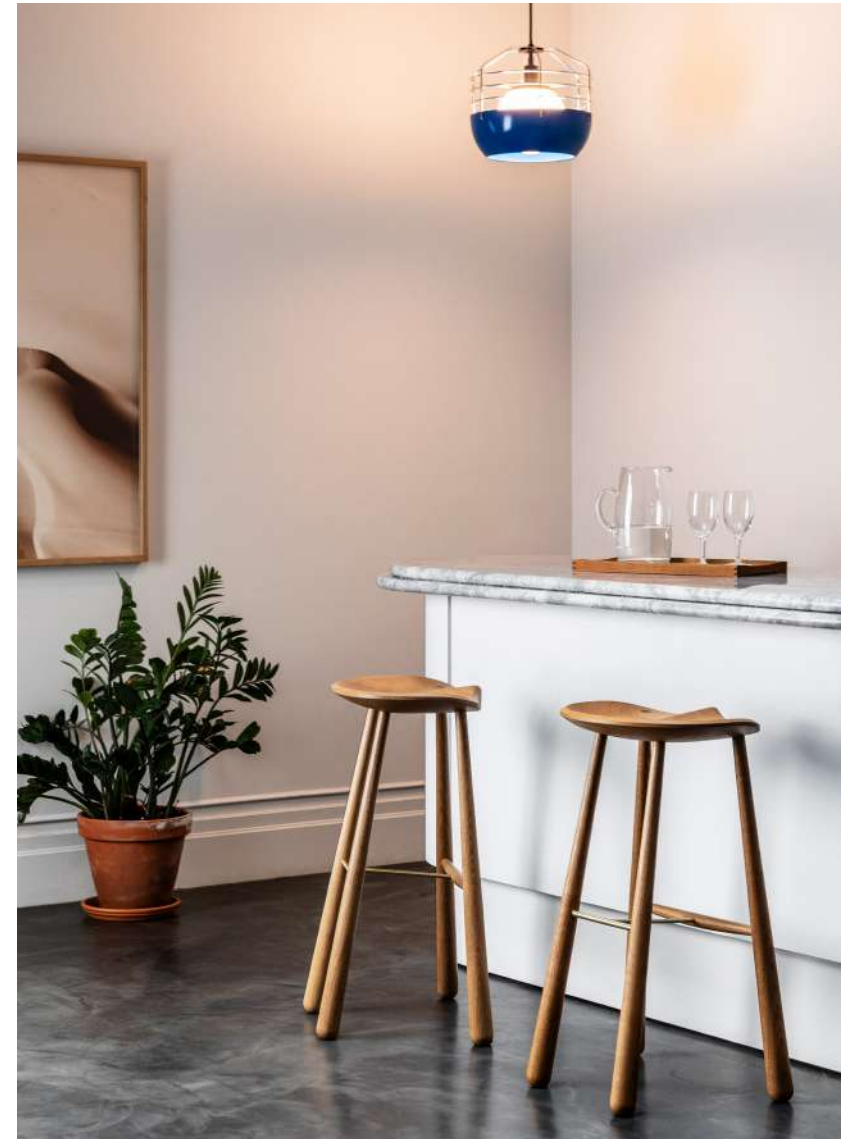
Roll & Hill — New York

FURNITURE & MATERIALS

Counter Stool  
Black Walnut

APPROX. MEASUREMENTS

L 14.25 in × W 18 in × H 25 in  
L 36.2 cm × W 45.7 cm × H 63.5 cm



Roll & Hill — New York

FURNITURE & MATERIALS

Bar Stool  
White Oak

APPROX. MEASUREMENTS

L 14.5 in × W 19 in × H 30 in  
L 36.8 cm × W 48.3 cm × H 76.2 cm

# The Cain

by Jenna Lyons

Something tiny, something square, something shiny, something spare.  
The Cain tables are rooted in a desire for classic detailing in a ghost-like form. The legs are as delicate as possible, while the brass details add a 70's sexiness.



## FURNITURE & MATERIALS

Coffee Table

Black Walnut

## APPROX. MEASUREMENTS

Coffee Table

L 36 in x W 48 in x H 17.88 in

L 91.44 cm x W 152.4 cm x H 45.4 cm

## Wood Species

- White Oak
- Black Walnut

## Features

The Side Table is available in two standard sizes — 14 x 18" and 18 x 18". The brass accents are unlacquered; with use they will darken and patina over time. Polishing will restore the sheen if desired.

## Details

### Materials

American Hardwood, Polished Unlacquered Brass. The Side Table and Nightstand come in a choice of matching wood, brass, or Arabescato Corchia stone top.

### Finish

Natural Oil

## Year

2021

## Designer

While president and executive creative director of J.Crew Group, Jenna Lyons was widely recognized as the creative force behind the American retail chain's phenomenal rise from floundering catalogue chain to one of the most coveted fashion brands in the US. Jenna is now Co-Founder and CEO of direct-to-consumer beauty brand, LoveSeen, as well as title role and Executive Producer of *STYLISH* with Jenna Lyons on HBO Max. Jenna currently resides in New York City with her son Beckett.





Roll & Hill — New York

FURNITURE & MATERIALS

Nightstand  
Black Walnut

APPROX. MEASUREMENTS

L 17.25 in x W 28 in x H 28.13 in  
L 43.82 cm x W 71.12 cm x H 71.44 cm



Roll & Hill — New York

FURNITURE & MATERIALS

Coffee Table  
Black Walnut

APPROX. MEASUREMENTS

L 36 in x W 48 in x H 17.88 in  
L 91.44 cm x W 152.4 cm x H 45.4 cm



FURNITURE & MATERIALS

Coffee Table

White Oak

APPROX. MEASUREMENTS

L 36 in x W 48 in x H 17.88 in

L 91.44 cm x W 152.4 cm x H 45.4 cm



FURNITURE & MATERIALS

Small Side Table

Black Walnut / Brass

APPROX. MEASUREMENTS

L 14 in x W 18 in x H 17.75 in

L 35.56 cm x 45.72 cm x H 45 cm





FURNITURE & MATERIALS  
Nightstand  
White Oak

APPROX. MEASUREMENTS  
Detail



FURNITURE & MATERIALS  
Small Side Table  
White Oak / Brass

APPROX. MEASUREMENTS  
Detail



FURNITURE & MATERIALS  
Coffee Table  
Black Walnut

APPROX. MEASUREMENTS  
Detail



FURNITURE & MATERIALS  
Large Side Table  
Black Walnut / Stone

APPROX. MEASUREMENTS  
Detail

# The Judy

by Jenna Lyons

Like The Cain tables, The Judy employs classic detailing in a ghost-like form. The legs are as delicate as possible and lend a sense of weightlessness to the piece. The seat is made of natural, undyed leather, which will patina over time.



## FURNITURE & MATERIALS

Bench

Black Walnut

## APPROX. MEASUREMENTS

L 18 in x W 47 in x H 17.5 in

L 45.722 cm x W 119.38 cm x H 44.45 cm

## Wood Species

- White Oak
- Black Walnut

## Features

Undyed vegetable-tanned leather will patina with use. COM available upon request.

## Details

### Materials

American Hardwood,  
Undyed Vegetable-Tanned Leather

### Finish

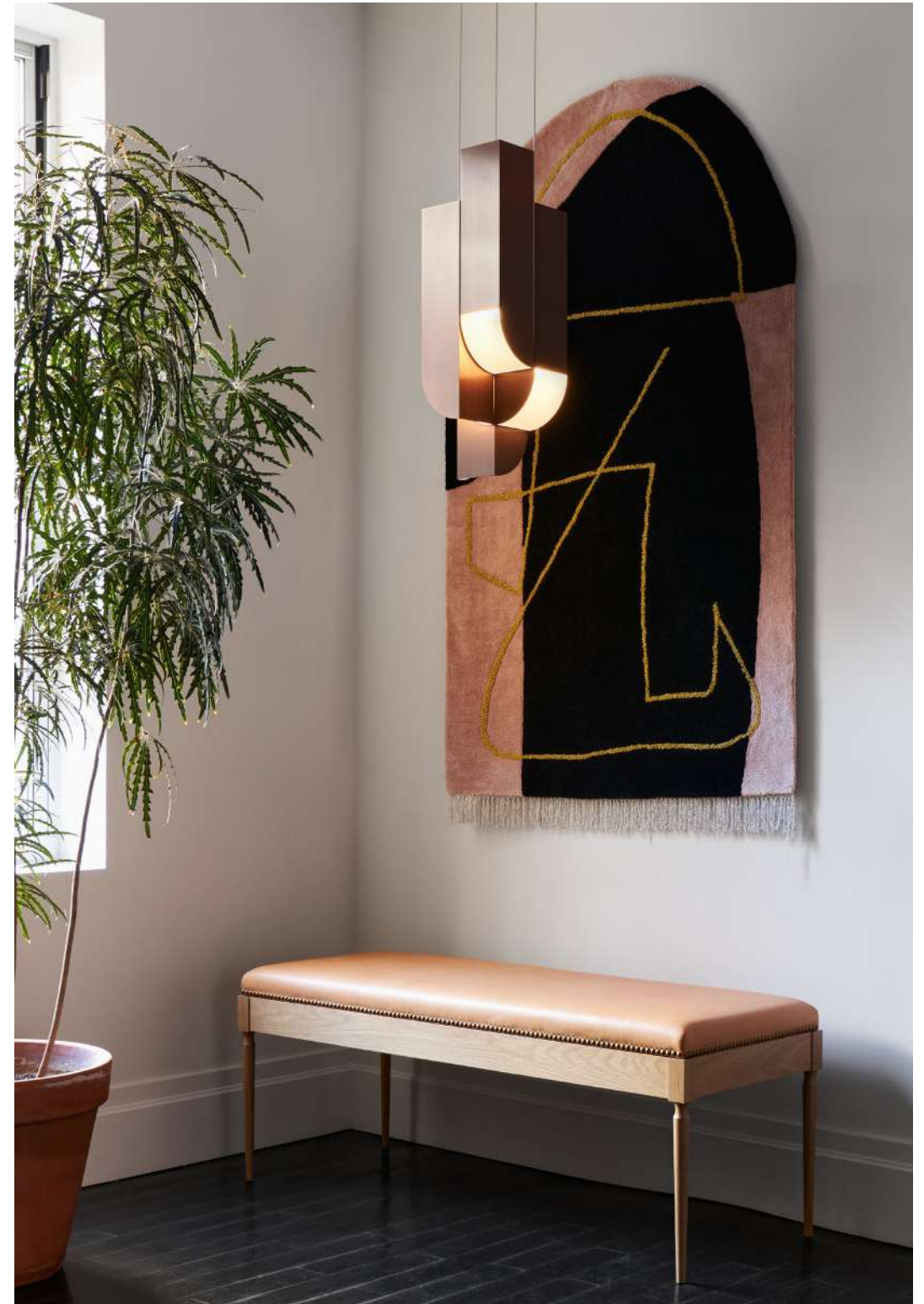
Natural Oil

## Year

2021

## Designer

While president and executive creative director of J.Crew Group, Jenna Lyons was widely recognized as the creative force behind the American retail chain's phenomenal rise from floundering catalogue chain to one of the most coveted fashion brands in the US. Jenna is now Co-Founder and CEO of direct-to-consumer beauty brand, LoveSeen, as well as title role and Executive Producer of *STYLISH* with Jenna Lyons on HBO Max. Jenna currently resides in New York City with her son Beckett.





FURNITURE & MATERIALS

Bench  
White Oak

APPROX. MEASUREMENTS

Detail



FURNITURE & MATERIALS

Bench  
Black Walnut

APPROX. MEASUREMENTS

L 18 in x W 47 in x H 17.5 in  
L 45.722 cm x W 119.38 cm x H 44.45 cm

# The Lair

by Jenna Lyons

Taking its cue from the traditional club chair, The Lair has a squared-off and simplified silhouette that makes it seem muscular and delicate. Tucked into its side is a small brass tray that folds out for your glass, your sharpie, or journal.



## FURNITURE & MATERIALS

Club Chair

Black Walnut

## APPROX. MEASUREMENTS

L 30 in x W 34.57 in x H 26.5 in

L 76.2 cm x W 87.82 cm x H 67.45 cm



## Wood Species

- White Oak
- Black Walnut

## Features

The brass accents are unlacquered; with use they will darken and patina over time. Polishing will restore the sheen if desired. Undyed vegetable-tanned leather will patina with use. COM available upon request.

## Details

### Materials

American Hardwood, Polished Unlacquered  
Brass, Undyed Vegetable-Tanned Leather

### Finish

Natural Oil

## Year

2021

## Designer

While president and executive creative director of J.Crew Group, Jenna Lyons was widely recognized as the creative force behind the American retail chain's phenomenal rise from floundering catalogue chain to one of the most coveted fashion brands in the US. Jenna is now Co-Founder and CEO of direct-to-consumer beauty brand, LoveSeen, as well as title role and Executive Producer of *STYLISH* with Jenna Lyons on HBO Max. Jenna currently resides in New York City with her son Beckett.





FURNITURE & MATERIALS

Club Chair  
Black Walnut

APPROX. MEASUREMENTS

L 30 in x W 34.57 in x H 26.5 in  
L 76.2 cm x W 87.82 cm x H 67.45 cm



FURNITURE & MATERIALS

Club Chair  
Black Walnut

APPROX. MEASUREMENTS

Detail



FURNITURE & MATERIALS

Club Chair  
Black Walnut

APPROX. MEASUREMENTS

Detail



FURNITURE & MATERIALS

Club Chair  
Black Walnut

APPROX. MEASUREMENTS

Detail

# The Lion

by Jenna Lyons

The stately silhouette of The Lion is reminiscent of a traditional Louis XIV dining chair and modernized through clean lines and pared-down details. Its thronelike stature is sculpted with an upright frame, while its delicate legs and natural leather upholstery add a hint of glamour.



## FURNITURE & MATERIALS

Dinning Chair

Black Walnut

## APPROX. MEASUREMENTS

L 21.59 in x W 18.40 in x H 32.57 in

L 54.84 cm x 46.74 cm x H 82.72 cm

## Wood Species

- White Oak
- Black Walnut

## Features

Undyed vegetable-tanned leather will patina with use. COM available upon request.

## Details

### Materials

American Hardwood,  
Undyed Vegetable-Tanned Leather

### Finish

Natural Oil

## Year

2021

## Designer

While president and executive creative director of J.Crew Group, Jenna Lyons was widely recognized as the creative force behind the American retail chain's phenomenal rise from floundering catalogue chain to one of the most coveted fashion brands in the US. Jenna is now Co-Founder and CEO of direct-to-consumer beauty brand, LoveSeen, as well as title role and Executive Producer of STYLISH with Jenna Lyons on HBO Max. Jenna currently resides in New York City with her son Beckett.





FURNITURE & MATERIALS

Dining Chair  
Black Walnut

APPROX. MEASUREMENTS

L 21.59 in x W 18.40 in x H 32.57 in  
L 54.84 cm x 46.74 cm x H 82.72 cm



FURNITURE & MATERIALS

Dining Chair  
Black Walnut

APPROX. MEASUREMENTS

L 21.59 in x W 18.40 in x H 32.57 in  
L 54.84 cm x 46.74 cm x H 82.72 cm





Roll & Hill — New York

FURNITURE & MATERIALS

Dining Chair  
Black Walnut

APPROX. MEASUREMENTS

L 21.59 in x W 18.40 in x H 32.57 in  
L 54.84 cm x 46.74 cm x H 82.72 cm



FURNITURE & MATERIALS

Dining Chair  
Black Walnut

APPROX. MEASUREMENTS

L 21.59 in x W 18.40 in x H 32.57 in  
L 54.84 cm x 46.74 cm x H 82.72 cm

# The Tom

by Jenna Lyons

The Tom holds a secret. An unassuming side table at first glance, Tom's secret is revealed as the top swivels to show a champagne bucket ready for the ceremony of popping a cork and sharing a glass.



## FURNITURE & MATERIALS

Champagne Table

Black Walnut

## APPROX. MEASUREMENTS

L 14.66 in x W 14.66 in x H 21.35 in

L 37.1 cm x W 37.1 cm x H 54.23 cm

## Wood Species

● Black Walnut

## Features

The brass accents are unlacquered; with use they will darken and patina over time. Polishing will restore the sheen it desired.

## Details

### Materials

American Hardwood,  
Polished Unlacquered Brass

### Finish

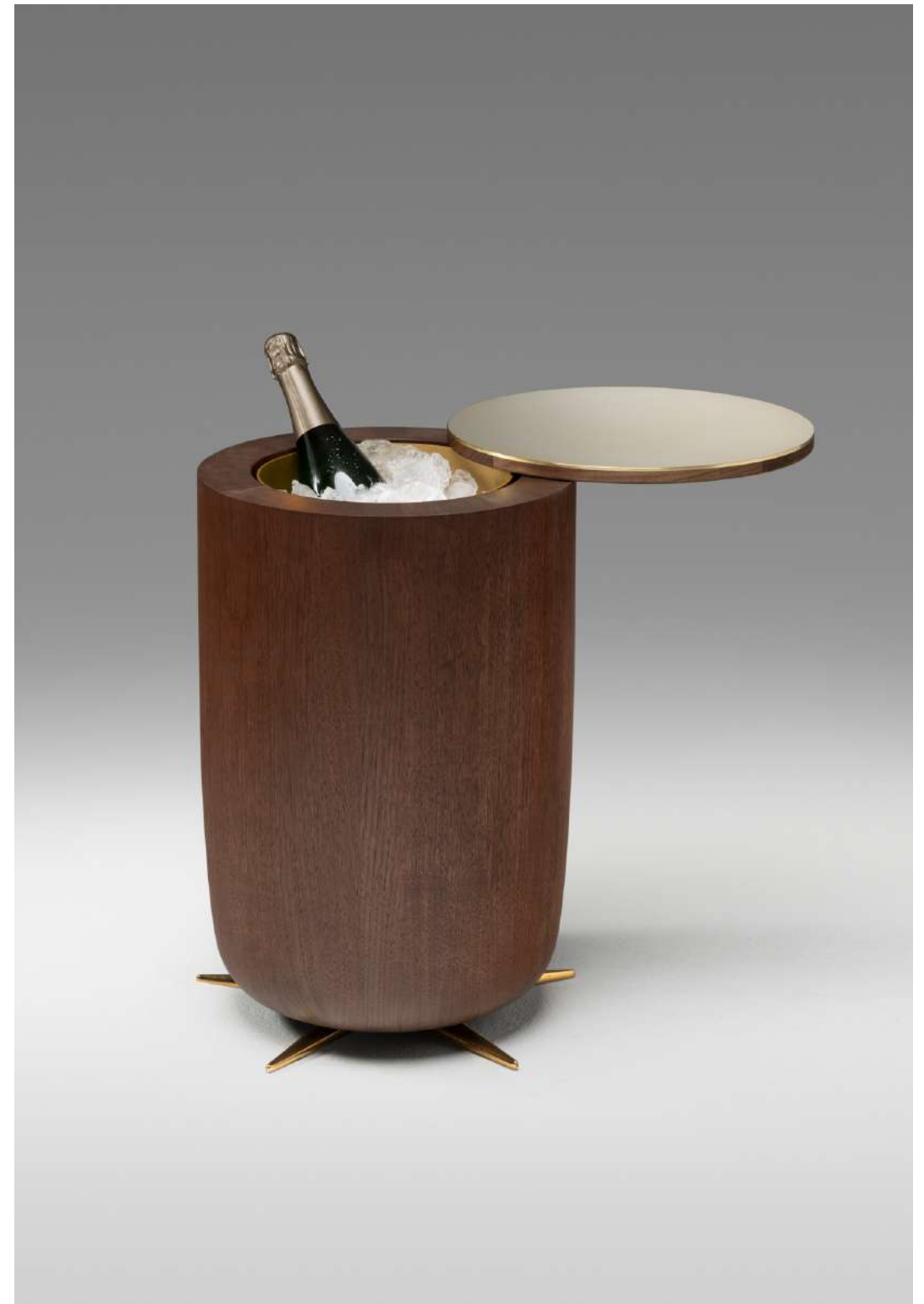
Natural Oil

## Year

2021

## Designer

While president and executive creative director of J.Crew Group, Jenna Lyons was widely recognized as the creative force behind the American retail chain's phenomenal rise from floundering catalogue chain to one of the most coveted fashion brands in the US. Jenna is now Co-Founder and CEO of direct-to-consumer beauty brand, LoveSeen, as well as title role and Executive Producer of *STYLISH* with Jenna Lyons on HBO Max. Jenna currently resides in New York City with her son Beckett.





FURNITURE & MATERIALS

Champagne Table  
Black Walnut

APPROX. MEASUREMENTS

Detail



FURNITURE & MATERIALS

Champagne Table  
Black Walnut

APPROX. MEASUREMENTS

Detail

# Three Plane

by Campagna

The Three Plane Chair is composed of simple forms combined in a thoughtful way to support the human form. The intersection of three planes – circle, rectangle, and irregular quadrilateral, meet to create a minimal occasional chair with rigid geometry and humanistic details.



## FURNITURE & MATERIALS

Chair

Black Walnut

## APPROX. MEASUREMENTS

L 19 in x W 20 in x H 30.5 in

L 48.3 cm x W 50.8 cm x H 77.5 cm



## Wood Species

- Hard Maple
- White Oak
- Black Walnut

## Details

### Materials

American Hardwood

### Finish

Natural Oil

## Year

2020

## Designer

Campagna is the studio of furniture maker and designer Cody Campanie. Born in 1986 in rural New York State, Cody studied architecture at Brown University and cabinet making at Seattle's Wood Technology Center. He aims to make well crafted objects and spaces that question the norms of embodied rituals and recall that built form stores cultural memory.





FURNITURE & MATERIALS

Chair

White Oak

APPROX. MEASUREMENTS

L 19 in x W 20 in x H 30.5 in

L 48.3 cm x W 50.8 cm x H 77.5 cm



FURNITURE & MATERIALS

Chair

Black Walnut

APPROX. MEASUREMENTS

L 19 in x W 20 in x H 30.5 in

L 48.3 cm x W 50.8 cm x H 77.5 cm



FURNITURE & MATERIALS

Chair  
White Oak

APPROX. MEASUREMENTS

L 19 in x W 20 in x H 30.5 in  
L 48.3 cm x W 50.8 cm x H 77.5 cm



FURNITURE & MATERIALS

Chair  
Black Walnut

APPROX. MEASUREMENTS

Detail



FURNITURE & MATERIALS

Chair  
Hard Maple

APPROX. MEASUREMENTS

L 19 in x W 20 in x H 30.5 in  
L 48.3 cm x W 50.8 cm x H 77.5 cm



FURNITURE & MATERIALS

Chair  
Black Walnut

APPROX. MEASUREMENTS

L 19 in x W 20 in x H 30.5 in  
L 48.3 cm x W 50.8 cm x H 77.5 cm



FURNITURE & MATERIALS

Chair  
Hard Maple

APPROX. MEASUREMENTS

L 19 in x W 20 in x H 30.5 in  
L 48.3 cm x W 50.8 cm x H 77.5 cm



Roll & Hill— New York

FURNITURE & MATERIALS

Chair  
White Oak

APPROX. MEASUREMENTS

L 19 in x W 20 in x H 30.5 in  
L 48.3 cm x W 50.8 cm x H 77.5 cm

# Credits

P. 7, 15, 37, 53, 56, 89, 95

Photographer: Fyodor Shiryaev Stylist: Louisa Fulkerson

P. 10, 40, 80, 81, 104

Photographer: Sarah Elliott

P. 21, 48, 61, 63, 69, 115

Photographer: Jonathan Allen

P. 24, 62, 74, 75, 121

Photographer: Max Burkhalter

P. 29, 70, 101

Photographer: Jeffrey Schad

P. 45

Photographer: Joseph De Leo

Product Photography

Jeffrey Schad + Jonathan Allen + Joseph De Leo

# About

Roll & Hill is a design-minded American furniture and lighting company based in Brooklyn, NY. We collaborate with some of the most exciting independent designers working today to create our exceptional collection. Jason Miller founded Roll & Hill in 2010 with a primary mission to establish a homegrown, American design aesthetic and offer independent designers the state-of-the-art manufacturing services typically associated with larger makers.

Roll & Hill is committed to on-demand production, allowing us to customize our pieces to our clients' needs. At our manufacturing facilities in Grand Rapids, Michigan, we make our furniture and lighting by hand, one piece at a time. Our designs draw from a rich material palette, including brass, bronze, leather, wood, hand-knotted rope, and mouth-blown glass. Our designers often pair historical elements with contemporary forms to create objects that feel familiar, yet totally new.

ROLLANDHILL.COM

## GENERAL INQUIRIES

87 34th Street, Unit 11, Brooklyn, NY 11232

T +1 (718) 387 6132

Info@rollandhill.com

## SALES INQUIRIES

3 Mercer St, New York, NY 10013

T +1 (718) 387 6132

Sales@rollandhill.com



IRI