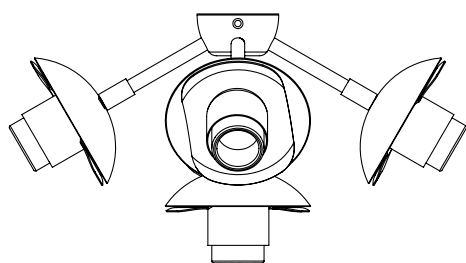
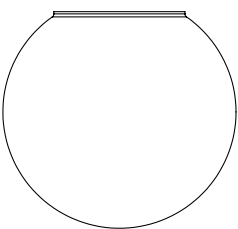


CONTENTS

Modo Flush Mount - 5 Globes



Globes (5)



#8-32 Screws (2)



1/8 IPS Nipple



#8/32 Socket
Screws (2)



Crossbar



Wago Connector (2)



Bulbs (5)



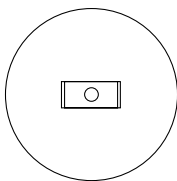
120V LED G25 E26
(bulbs included)

240V LED G25 E27
(bulbs included)

9-64 Allen Key



Canopy and
mounting Bracket



SAFETY INFORMATION

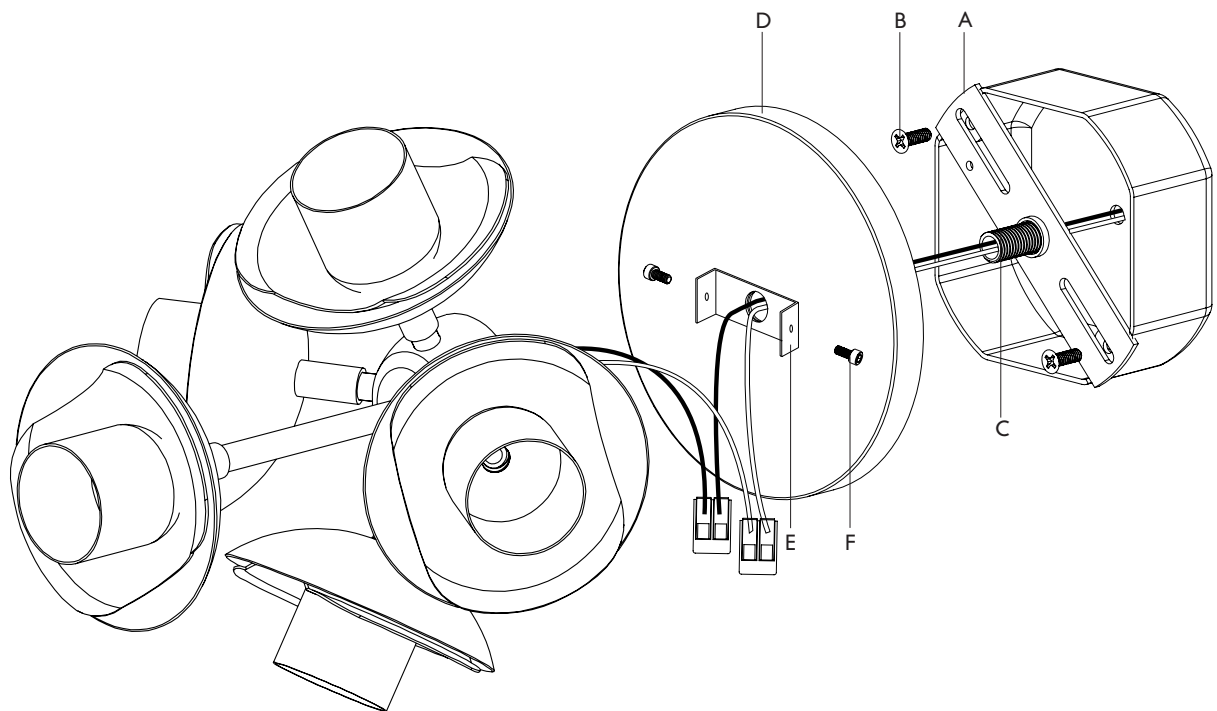
Only one light bulb per socket.
Only suitable for direct mounting on non-combustible surfaces.
Under no circumstances can Modos Chandeliers be mounted on normally flammable surfaces.
Suitable for dry, indoor use only.
Maximum ambient temperatures: 25° C

WALL INSTALLATION | MODO SCONCE - 5 GLOBE

Note: Please contact a licensed electrician.

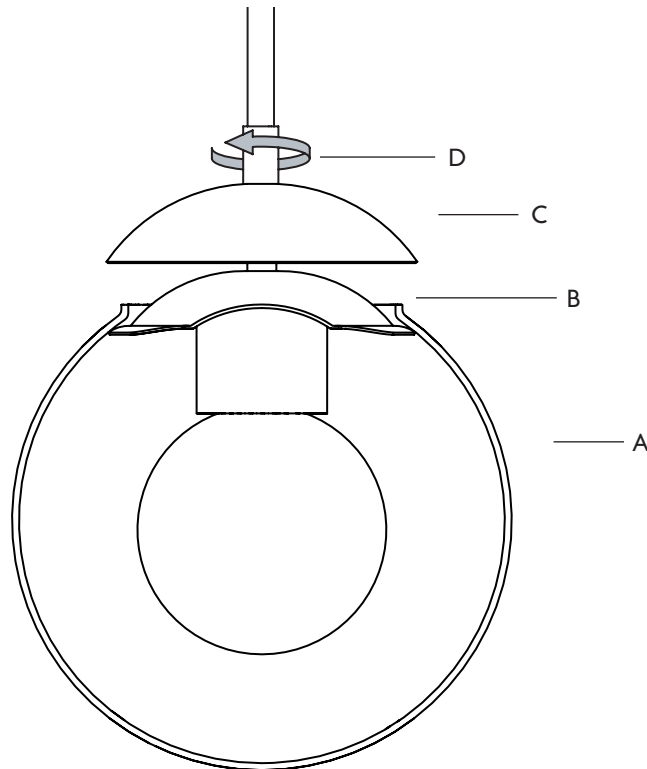
Note: Do not use bulbs that exceed 25 watts.

1. Attach the crossbar (A) from the back of the fixture onto the junction box using provided #8-32 screws (B). Screw the 1/8 IPS nipple (C) into the center hole of the crossbar and feed electrical wires out from the nipple.
2. Place backplate (D) over nipple and secure by threading the mounting bracket (E) onto the nipple. Tighten until canopy is flush against the wall and mounting bracket is positioned horizontally.
2. Hold fixture up to backplate and make electrical connections to sconce, trimming excess wire. Push the connected wires into the half hub.
3. Fit the hub over the mounting bracket and secure in place with provided #8-32 socket screws (F) and allen key.



INSTALLATION | ATTACHING MODO GLOBES

1. Sandwich the glass globe (A) around the socket fitter (B) and cap (C). Gently tighten the sleeve (D) to hold the globe in place.



SAFETY INFORMATION

Suitable for dry, indoor use only.

Maximum ambient temperature: 25°C

If the external flexible cable or cord of this luminaire is damaged, it shall be exclusively replaced by Roll & Hill or Roll & Hill's service agent or a similarly qualified person in order to avoid hazard.

The light source contained in this luminaire shall only be replaced by the manufacturer or his service agent or a similar qualified person.