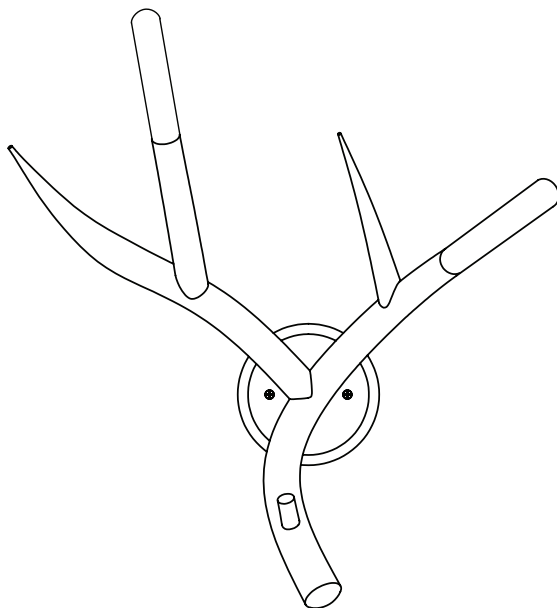
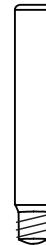


CONTENTS

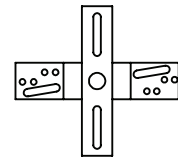
Superordinate Antler Sconce



E14 Bulbs (2)
120V (bulbs included)
240V (bulbs not included)



Crossbar



8-32 Finished
Screws (2)



8-32 Crossbar
Screws (2)



SAFETY INFORMATION

Only one light bulb per socket.

Only suitable for direct mounting on non-combustible surfaces.

Under no circumstances can Superordinate Antler Fixtures be mounted on normally flammable surfaces.

Suitable for dry, indoor use only.

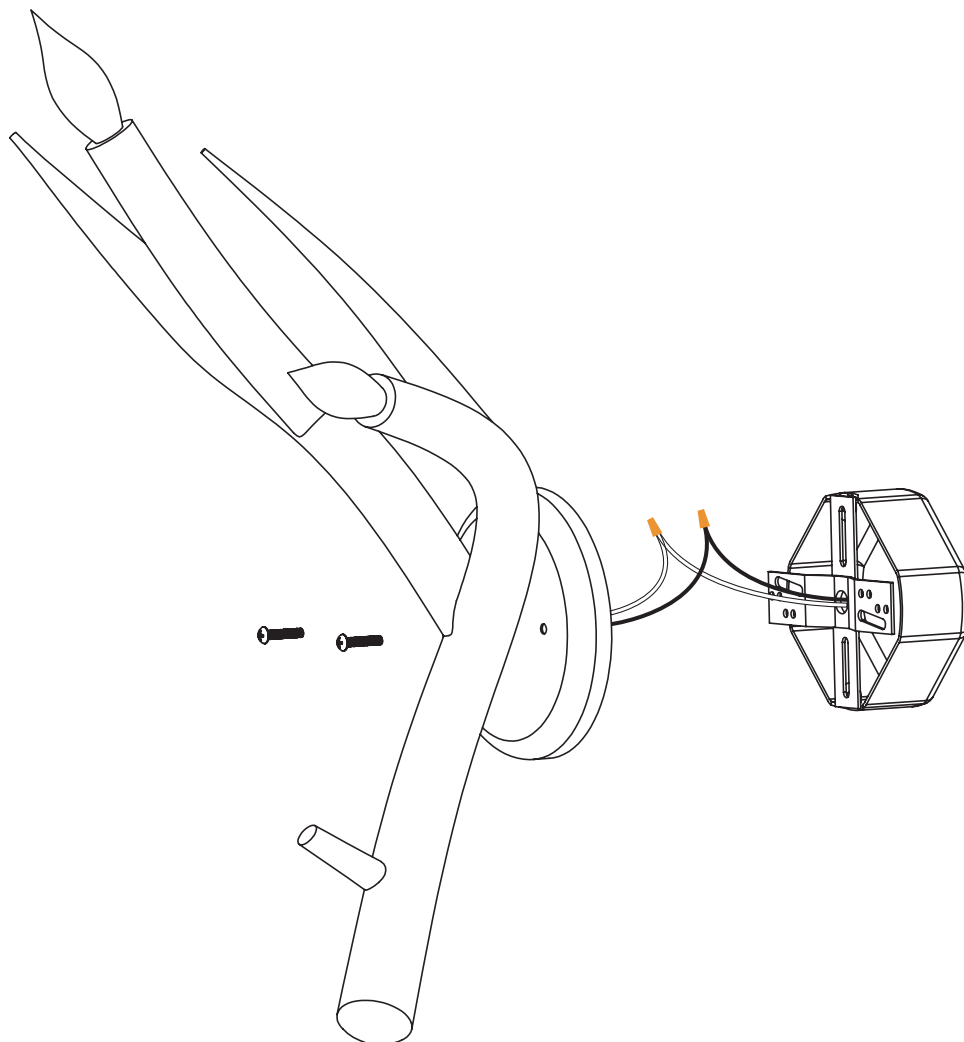
Maximum ambient temperatures: 25° C

SCONCE INSTALLATION

Note: Please contact a licensed electrician.

Note: Do not use bulbs that exceed 25 watts.

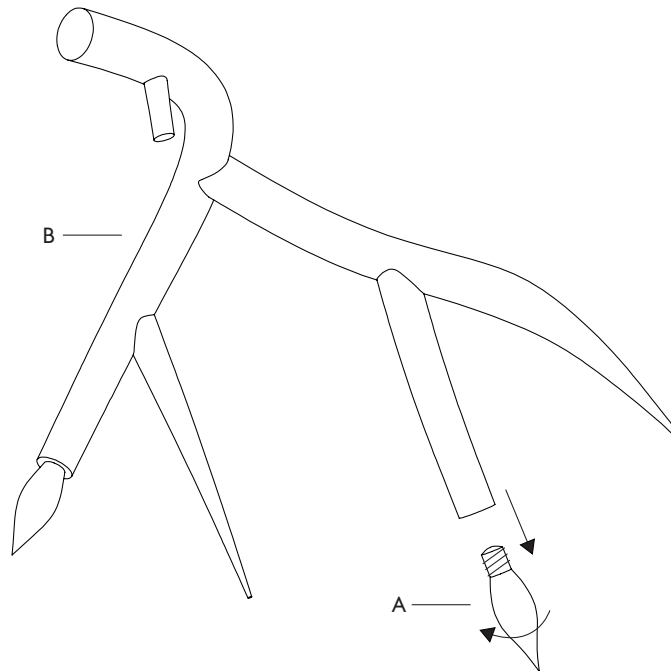
1. Attach flat side of adjustable bracket to junction box using provided 8-32 machine screws.
2. Carefully hold fixture up to junction box and make lead wire connections. Push wire connections behind bracket into junction box.
3. Using the finished 8-32 screws, loosely fasten the cover plate to the adjustable bracket.
4. Once attached, the bracket will rotate to level the sconce so that the two screw holes are in line horizontally.
5. Tighten screws to hold cover plate flush to wall.
6. Install bulbs.



REPLACING BULB

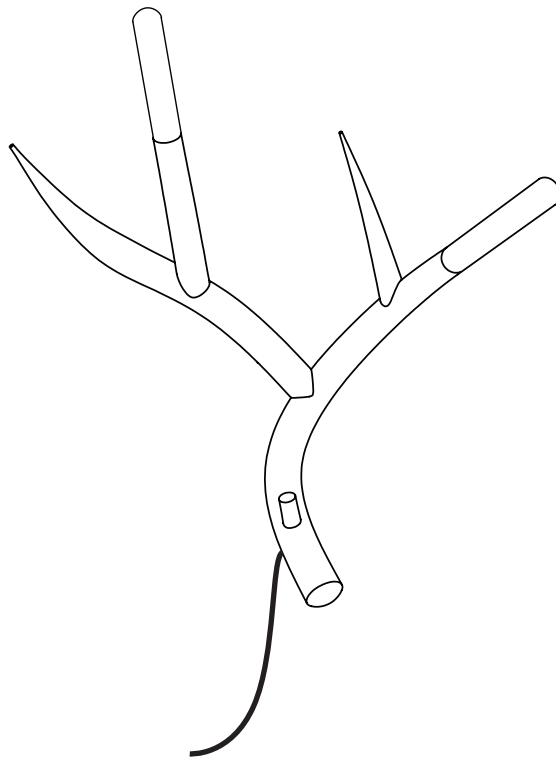
Note: Make sure to power off fixture and allow bulbs and porcelain arms to cool.

1. To change the halogen E12 bulb (A) unscrew bulb from fixture (B) and replace.

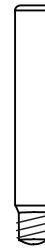


CONTENTS

Superordinate Antler Sconce with Plug



E14 Bulbs (2)
120V (bulbs included)
240V (bulbs not included)



Wall Hooks (2)



SAFETY INFORMATION

Only one light bulb per socket.

Only suitable for direct mounting on non-combustible surfaces.

Under no circumstances can Superordinate Antler Fixtures be mounted on normally flammable surfaces.

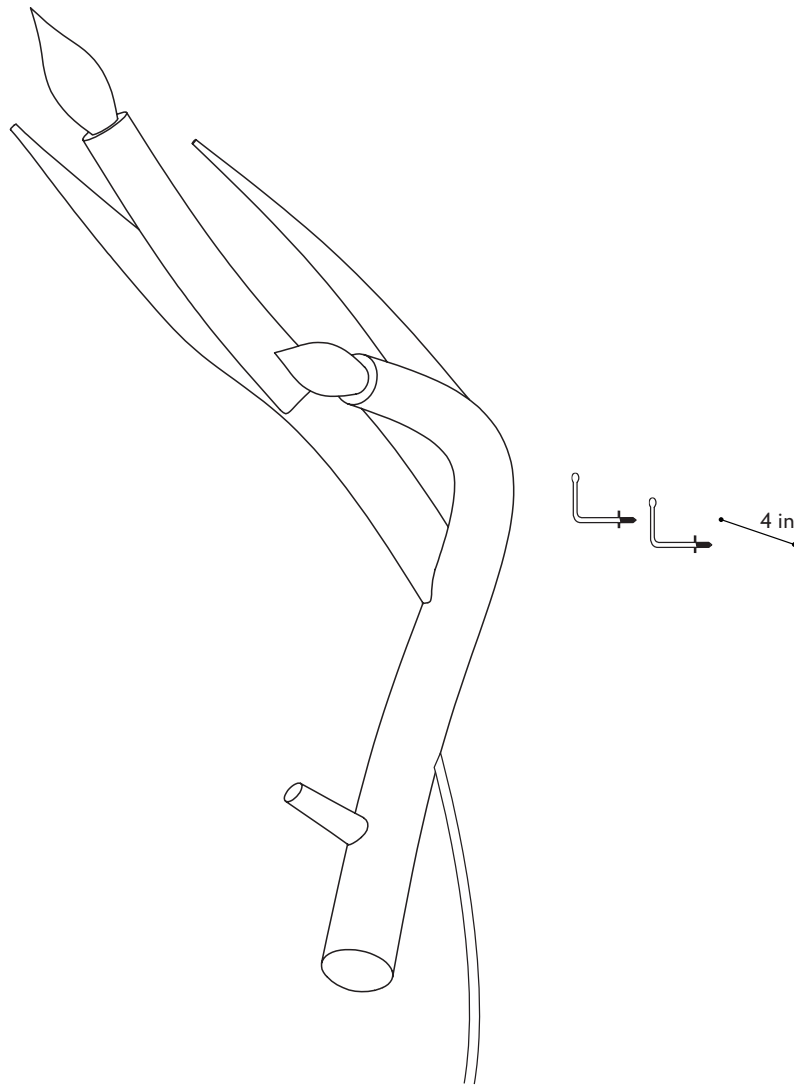
Suitable for dry, indoor use only.

Maximum ambient temperatures: 25° C

WALL INSTALLATION | ANTLER SCONCE WITH PLUG

Note: Do not use bulbs that exceed 25 watts.

1. Mark two points on wall, four inches apart, and drill pilot holes for 1/8" screw.
2. Screw two wall hooks into pilot holes until flange is flush with wall. Make sure they are secured to wall without over tightening. The ball hook ends should be pointing up.
3. Hold the fixture to the wall and match the two holes with the hooks. Once secure, install two light bulbs and plug in to outlet.



REPLACING BULB

Note: Make sure to power off fixture and allow bulbs and porcelain arms to cool.

1. To change the halogen E12 bulb (A) unscrew bulb from fixture (B) and replace.

